

HYMAX[®]

a **MUELLER** brand

HYMAX[®] 2 LONG BODY (1.5" - 12") Product Specifications

FEATURES

- Advanced wide-range coupling with a patented flip gasket
- Eliminates gasket removal mistakes and maximizes installer work efficiency
- Game-changing wide-range coupling, proven in over 1M installations in the US
- Suitable for all types of pipes - ductile iron, cast iron, steel, copper, PE, PVC, AC, GRP
- Patented hydraulically-assisted gasket with 2-stage sealing
- Long body for extra size flexibility
- Lightweight construction enables fast and easy installation
- Allows 4° dynamic deflection on each end, reducing future pipe damage
- One product can connect pipes of two different materials
- Lifting T-handle exists in sizes 3" - 12" only

SPECIFICATIONS STANDARDS

- HYMAX Long Body meets or exceeds requirements of standards: AWWA C219, NSF 61, NSF 372.

SIZE

- Available in nominal diameter from 1.5" - 12" standard.

MATERIALS

END RINGS

- ASTM A283/A283M Grade C steel.



JOIN



REPAIR



RESTRAIN



TAP



CENTER RING

- ASTM A53 Grade A steel.

GASKETS

- EPDM Compounded for water and sewage in accordance to ASTM D2000, meets international standards for contact with drinking water.

BRIDGE

- AISI 304 stainless steel.

SPHERICAL SPACERS

- AISI 304 stainless steel.

COATING

- 100% fusion bonded epoxy for enhanced corrosion protection.
- Average thickness 14 mm.

NUTS AND BOLTS

- Available in AISI 304 stainless steel. Rolled thread and anti-galling coating.

MUELLER

PRODUCT PERFORMANCE*

WORKING TEMPERATURE

- 20° F up to +125° F

DYNAMIC DEFLECTION

- Up to 4° per side

MIN. PIPE INSERTION

- 2.25"

MAXIMUM OFFSET FOR MISALIGNED PIPES

- ND 1.5" - ND 3": 0.39"
- ND 4" - ND 12": 0.51"

MAXIMUM OUT OF ROUNDNESS

- ND 1.5": 0.08"
- ND 2" - ND 3": 0.20"
- ND 4" - 12": 0.31"

WORKING PRESSURE

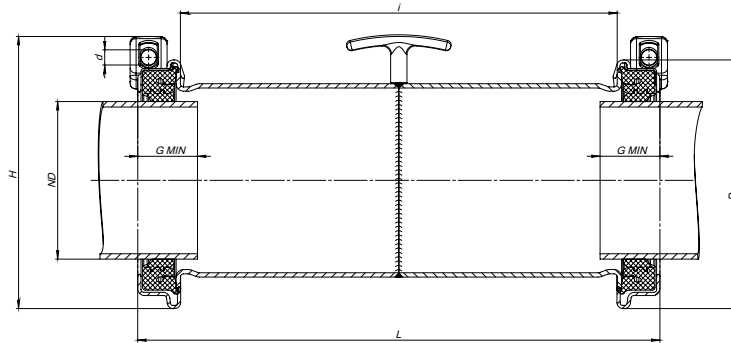
- 260 psi

VACUUM TEST

- 12 psi

* See submittal drawings for details.

PRODUCT TABLES



HYMAX®2 LONG BODY SIZES (1.5" - 12")

HYMAX Part Number	ND (inch)	Overall Range (inch)	Range in Closed Gasket Position (inch)	Range in Open Gasket Position (inch)	Bolt Num and Size (mm)	Torque (ft-lbs)	Approx. Weight (lbs)	Length (inch)
862-54-0041-16	1.5	1.61 - 2.13	1.61 - 1.97	1.96 - 2.13	2 - M12	35	7	10
862-54-0054-16	2	2.10 - 3.03	2.10 - 2.60	2.56 - 3.03	2 - M12	50	8	10.6
862-54-0088-16	3	3.46 - 4.33	3.46 - 3.90	3.86 - 4.33	2 - M12	50	14	14.6
862-54-0108-16	4	4.25 - 5.63	4.25 - 5.00	4.92 - 5.63	2 - M14	75	21	14.5
862-54-0130-16	5	5.12 - 6.38	5.12 - 5.75	5.71 - 6.38	2 - M14	75	28	18.7
862-54-0163-16	6	6.42 - 7.68	6.42 - 7.05	7.01 - 7.68	2 - M14	75	32	18.7
862-54-0190-16	7	7.48 - 8.74	7.48 - 8.11	8.07 - 8.74	2 - M14	75	36	18.7
862-54-0217-16	8	8.54 - 9.84	8.54 - 9.17	9.13 - 9.84	2 - M14	75	42	18.7
862-54-0272-16	10	10.70 - 12.00	10.70 - 11.37	11.33 - 12.00	2 - M14	75	50	18.7
862-54-0278-16	10	10.96 - 12.26	10.96 - 11.63	11.59 - 12.26	2 - M14	75	53	18.7
862-54-0315-16	12	12.40 - 13.66	12.40 - 13.03	12.99 - 13.66	2 - M14	80	54	18.7
862-54-0334-16	12	13.15 - 14.41	13.15 - 13.78	13.74 - 14.41	2 - M14	80	56	18.7

To learn more, visit HymaxUSA.com.

Mueller refers to one or more of Mueller Water Products, Inc., a Delaware corporation ("MWP"), and its subsidiaries. MWP and each of its subsidiaries are legally separate and independent entities when providing products and services. MWP does not provide products or services to third parties. MWP and each of its subsidiaries are liable only for their own acts and omissions and not those of each other. MWP brands include Mueller®, Echologics®, Hydro Gate®, Hydro-Guard®, HYMAX®, Krausz®, Jones®, MiNet®, Milliken®, Pratt®, Pratt Industrial®, Singer®, and U.S. Pipe Valve & Hydrant. Please see muellerwpp.com/brands to learn more.

© 2021 Mueller Co., LLC. All Rights Reserved. The trademarks, logos and service marks displayed in this document are the property of Mueller Co., LLC, its affiliates or other third parties. Products above marked with a section symbol (§) are subject to patents or patent applications. For details, visit www.mwppat.com. These products are intended for use in potable water applications. Please contact your Mueller Sales or Customer Service Representative concerning any other application(s).

