

# HYMAX<sup>®</sup>

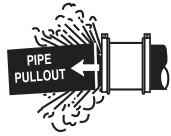
a MUELLER brand

## HYMAX PRO (4" - 10") Installation Instructions

### PRODUCTS

- **HYMAX<sup>®</sup> Pro Dedicated Coupling**

### WARNING



This product does not restrain axial pipe movement. Proper anchorage of the pipe is required if this product is used as a coupling. Failure to anchor the pipe ends could result in the escape of line content, and may cause property damage, serious injury or death.



**Caution:** This product is not intended for use on natural gas piping, or any other type of gas piping. To do so could result in escaping gas that could ignite and cause property damage, serious injury or death.

### WARNING

#### WHEN INSTALLING ON ASBESTOS CEMENT PIPE

**Danger:** Asbestos Dust Hazard. Avoid Breathing Dust. Wear Assigned Protective Equipment. Do not remain in area unless your work requires it. Seek compliant expert advice for breathing protection and protective equipment. Call OSHA 1-800-321-6742 for more information.



### IMPORTANT

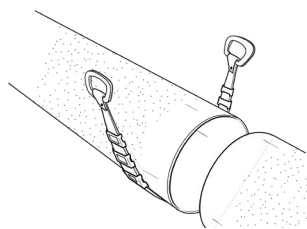
- **The HYMAX Pro products are stab-on type couplings.** Do not disassemble the product. DO NOT lubricate nor loosen the bolts.
- **DO NOT lubricate bolts and nuts.** Bolts are pre-lubricated with a mag (molecular anti-galling) dry coating. Greasing bolts or nuts voids manufacturer's warranty.
- **Use a torque wrench to tighten the bolts.** A torque wrench will assure a proper torque has been applied to the coupling.
- **Tighten bolts to the torque value** provided on the label in one continuous step. HYMAX Pro products do not require a gradual increase of torque over a specified period, nor do they require re-torque. The minimal torque requirements must be achieved prior to any recharging of the line.
- **Make sure you have proper support for the pipes.** The HYMAX Pro Dedicated Coupling is not designed to carry the pipes' weight.
- **For HDPE,** pipe stiffeners or inserts are required.

## PREPARE PRODUCT AND PIPE FOR INSTALLATION

### STEP 1: CLEAN AND DESCALE THE PIPE

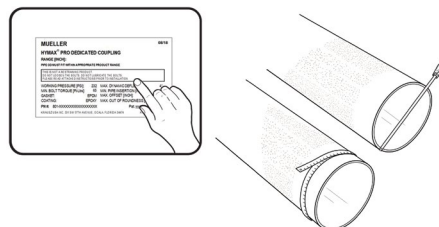
#### MAKE SURE THAT:

- The pipe is clear from debris and defects.
- The pipe is not out of round and is free of scratches, dents, and flats.



### STEP 2: MEASURE THE PIPES' OD

**MEASURE** twice and make sure the coupling size range (as indicated on the product's label) fits the pipes properly.



JOIN



REPAIR



RESTRAIN



TAP

**MUELLER**

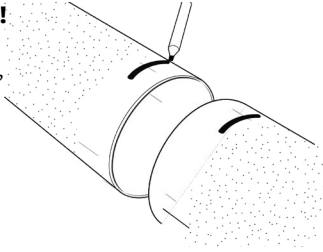
# INSTALLATION OF THE COUPLING

## STEP 3: MARK THE PIPE

Mark each pipe end according to the minimum stab depth indicated on the label.

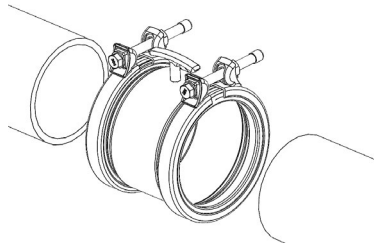
### DO NOT LUBRICATE BOLTS!

Except Steel, PVC and PE pipes, all rough-surfaced pipes must be lubricated with water-based gasket lubricant.

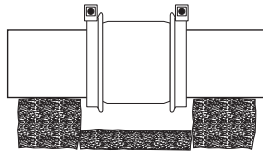


## STEP 4: POSITION THE COUPLING FOR INSTALLATION

Stab the HYMAX® Pro coupling over the pipe end with bolts positioned for easy access.



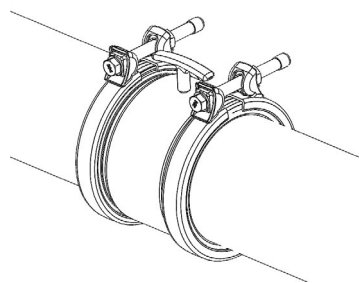
Make sure that the pipes are properly supported.



## STEP 5: INSTALL

If possible, place the coupling(s) on the pipe with top-facing bolts and lower the pipe and coupling(s) in to place.

Slide the coupling(s) onto the pipes so that they cover the markings made in step 3.



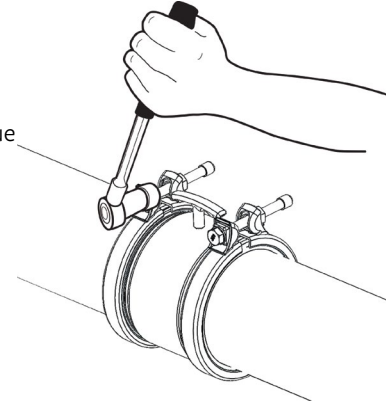
## STEP 6: TIGHTEN BOLTS

Tighten the HYMAX® Pro coupling's bolts using a torque wrench:

Product Size	Socket Size
4" - 10"	7/8"

Tighten the bolts evenly from head bolt alternating between bolts to the torque indicated on the label.

**NOTE:** Use of a torque wrench is required!



## STEP 7: CHARGE THE LINE

Charge the line and check for leaks. If any leakage across the seal end is evident, reduce the pressure in the line and increase the labeled torque of the end ring bolts by up to 50%.

### To Learn More, visit [HymaxUSA.com](http://HymaxUSA.com).

Mueller refers to one or more of Mueller Water Products, Inc., a Delaware corporation ("MWP"), and its subsidiaries. MWP and each of its subsidiaries are legally separate and independent entities when providing products and services. MWP does not provide products or services to third parties. MWP and each of its subsidiaries are liable only for their own acts and omissions and not those of each other. MWP brands include Mueller®, Echologics®, Hydro Gate®, Hydro-Guard®, HYMAX®, iZO®, Jones®, Krausz®, Mi.Net®, Milliken®, Pratt®, Pratt Industrial®, Singer®, and U.S. Pipe Valve & Hydrant. Please see [muellerwp.com/brands](http://muellerwp.com/brands) to learn more.

© 2022 Mueller Co., LLC. All Rights Reserved. The trademarks, logos and service marks displayed in this document are the property of Mueller Co., LLC., its affiliates or other third parties. Products above marked with a section symbol (§) are subject to patents or patent applications. For details, visit [www.mwppat.com](http://www.mwppat.com). These products are intended for use in potable water applications. Please contact your Mueller Sales or Customer Service Representative concerning any other application(s).