



HYMAX[®] THREADED AND FLANGED OUTLET

1.5"-60" (SIZES 26"-60" HAVE 1-LAYER)

HYMAX[®]
Repair the past. Connect the future.

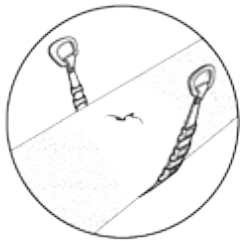
INSTALLATION INSTRUCTIONS

DO NOT DISASSEMBLE THE COUPLING. DO NOT LUBRICATE THE BOLTS.

GENERAL INSTRUCTIONS:

THE HYMAX THREADED OUTLET AND THE HYMAX FLANGED OUTLET ARE STAB ON TYPE COUPLINGS.
1.5"-24" HAVE A 2-LAYER GASKET.
26"-60" HAVE A 1-LAYER GASKET.

STEP 1



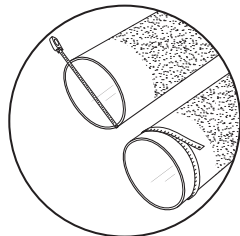
Prepare both pipe ends of the existing pipe by descaling if required. Clean the pipe as required using water. Make sure that the pipes are clear from debris and defects that may interfere with the HYMAX Outlet's proper seal.

NOTE:

Sizes 1.5" - 24": Except steel, PVC, and PE pipes, all rough surfaced pipes must be lubricated with a water-based gasket lubricant in order to achieve a proper seal.

Sizes 26" - 60": All pipes must be lubricated with a water-based gasket lubricant in order to achieve a proper seal.

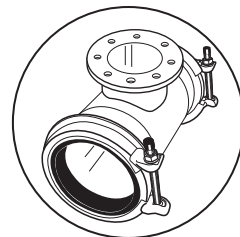
STEP 2



Measure the pipes' OD twice and make sure the coupling's size will fit the pipes properly.

NOTE: Each coupling's size range is shown on the product's label. Ensure that the pipe is not out of round and is free of scratches, dents, flats or other defects which may interfere with the coupling's proper seal. The coupling may not fit well or function properly on pipe which is out of round or damaged.

STEP 3



Unpack the coupling. Carefully remove the coupling from its packaging.

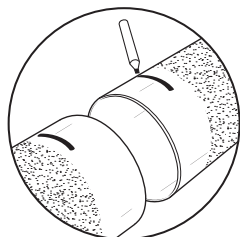
Inspect the coupling, if the end rings are not centered on the coupling DO-NOT-USE. Contact your distributor for return and replacement!

DO NOT attempt to hammer the end ring into place! This will damage the end ring and void the warranty!

NOTE: The HYMAX Outlet is a stab on coupling. Do not remove the end ring bolts.

NOTE: Bolts are pre-lubricated with a MAG dry coating. Do not lubricate the bolts and nuts. Greasing or lubricating bolts or nuts voids manufacturer's warranty.

STEP 4



Mark each pipe end to a minimum required stab depth as indicated on the product label. This mark indicates the required stab depth for the coupling.

INSTALLATION INSTRUCTIONS

HYMAX® THREADED AND FLANGED OUTLETS, SIZES 1.5"-60" (SIZES 26"-60" HAVE 1-LAYER GASKET)

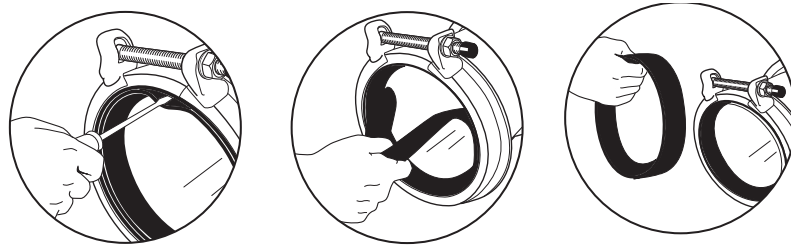
HYMAX®
Repair the past. Connect the future.

STEP 5 ONLY FOR 1.5"-24"

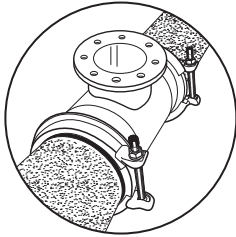
For sizes 1.5"-24", the Outlet's gasket system has two layers, a removable inner gasket and a hydraulically assisted "outer gasket". The "inner gasket" can be removed to accommodate larger OD pipes.

DO NOT remove the inner gasket unless the OD falls within the upper range of the coupling. The proper range sizes are shown on the product label. If the inner layer of the gasket must be removed, fold the inner layer, then break the parting line by inserting a screwdriver and pull the gasket out of the coupling.

NOTE: Measure the OD of the pipe TWICE using an OD tape! Once the inner gasket is removed it can NOT be re-installed!



STEP 6



Position the Coupling for installation. If possible place the coupling(s) on the replacement pipe (on both ends) with top-facing bolts and lower the pipe and couplings into the ditch. Slide the couplings outward so that it covers the marks made in step 4.

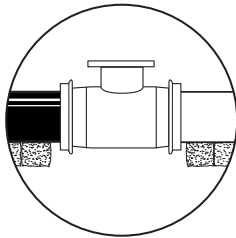
Make sure that the pipes are not touching inside the body of the HYMAX Outlet. There must be space between the pipes in order for continuous dynamic deflection (CDD) to take place.

Make sure that the pipes are properly supported.

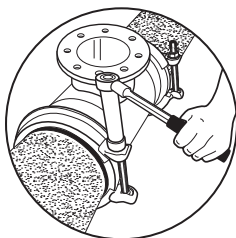
NOTE: HYMAX is not designed to support the weight of the pipes by itself.

For uncoated ductile iron, grey cast iron and asbestos cement pipe surfaces - appropriate water-based gasket lubricant is required on both gaskets inside surface and pipe's outer surface.

DO NOT LUBRICATE BOLTS!



STEP 7



Tighten the coupling bolts to the right torque shown on the product label. When you finish, re-check the torque again.

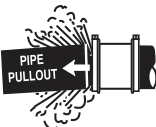

NOTE: Use of a torque wrench to tighten the bolts is required. A torque wrench will assure a proper torque has been applied to the coupling. Do not use other tools to tighten the coupling's bolts!

INSTALLATION INSTRUCTIONS

HYMAX® THREADED AND FLANGED OUTLETS, SIZES 1.5"-60" (SIZES 26"-60" HAVE 1-LAYER GASKET)

STEP 8

Recharge the line and check for leaks. If any leakage is evident, reduce the pressure in the line and increase bolt's torque by up to 50%. Verify again there are no leaks along the seal.

 <p>WARNING</p>	<p>This product does not restrain axial pipe movement. Proper anchorage of the pipe is required if this product is used as a coupling. Failure to anchor the pipe ends could result in the escape of line content, and may cause property damage, serious injury or death.</p>	 <p>WARNING</p>	<p>Caution: This product is not intended for use on natural gas piping, or any other type of gas piping. To do so could result in escaping gas that could ignite and cause property damage, serious injury or death.</p>
---	--	--	---

KRAUSZ USA. 331 SW 57TH AVENUE, OCALA, FLORIDA 34474 • INFO@KRAUSZUSA.COM

FOR ORDERING INFORMATION OR TO SPEAK WITH A KRAUSZ REPRESENTATIVE PLEASE CONTACT US AT:
855-457-2879 OR 855-4KRAUSZ. • FAX: 352-304-5787 • WWW. KRAUSZUSA.COM

Hymax® is a registered trademark of Krausz Industries Ltd.