



HYMAX[®] TAPPED CLAMP

WIDE-RANGE CLAMP (4"-24")

HYMAX[®]
Repair the past. Connect the future.

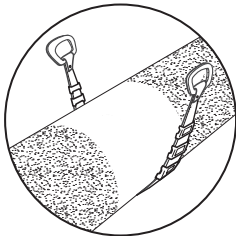
INSTALLATION INSTRUCTIONS

DO NOT DISASSEMBLE THE CLAMP. DO NOT LUBRICATE THE BOLTS.

GENERAL INSTRUCTIONS:

HYMAX TAPPED CLAMP IS A FLAT GASKET CLAMP THAT CONNECTS TO EXTERNAL PIPES AT SERVICE CONNECTIONS OR BRANCH LINES.

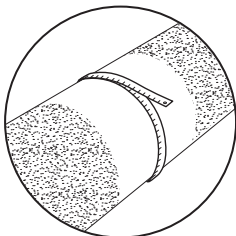
STEP 1



Thoroughly clean and de-scale the pipe surface where the clamp is to be installed. The pipe surface should be free of dirt, corrosion and debris.

NOTE: All pipes must be lubricated with a water-based gasket lubricant in order to achieve a proper seal.

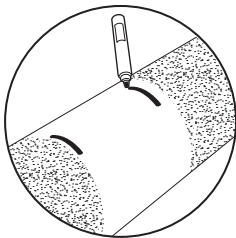
STEP 2



Measure the pipe TWICE using an OD tape. Select the appropriate clamp to fit the outside diameter of the pipe. Unpack it carefully.

NOTE: Bolts are pre-lubricated with a dry coating. Do not lubricate bolts/nuts. Greasing or field lubricating bolts/nuts voids warranty.

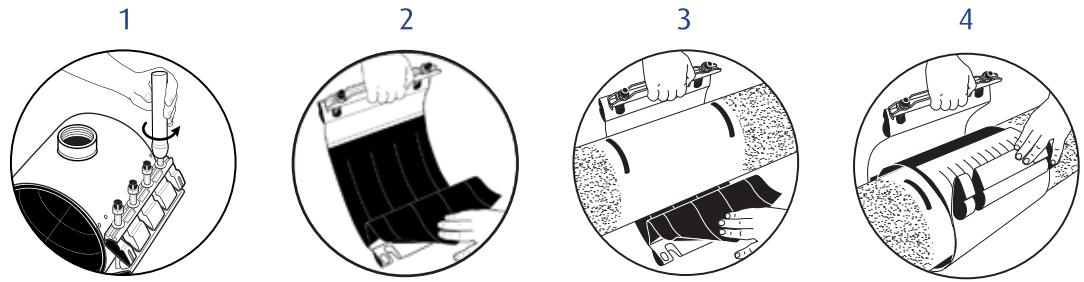
STEP 3



Mark the pipe according to the length of the HYMAX Tapped Clamp.

STEP 4

Loosen the HYMAX Tapped Clamp nuts but do not disassemble completely (1). Grasp the side compression beam, and unlatch it from the lug (2). While positioning the side compression beam, open up the clamp fully (3). Wrap the HYMAX Tapped Clamp around the pipe (4).

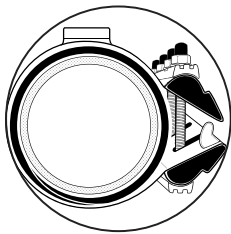


STEP 5

Center the HYMAX Tapped Clamp over the installation area.

NOTE: The HYMAX Tapped Clamp has sufficient range to be assembled next to the installation area and slide over the pipe as long as the pipe has been lubricated with a water-based lubricant.

STEP 6



Once the HYMAX Tapped Clamp is positioned around the pipe, re-engage the side compression beam over the lug assembly by pushing it downward until it clicks in place TWICE.

NOTE: After the first click you can still slide the HYMAX Tapped Clamp over the pipe to its final position, and then click again to its second and final position.

STEP 7

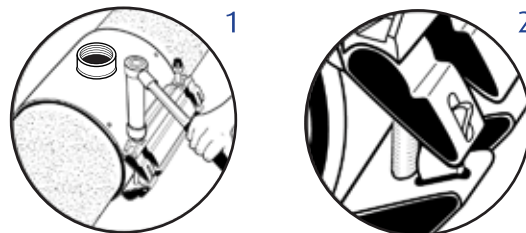
Make sure the tapered end of the gasket is on the surface of the pipe and is smoothly positioned in place.

STEP 8

Tighten all nuts, working from the center of the lug outward. Re-check that proper torque has been reached (drawing 1).

NOTE: Use of torque wrench is mandatory. The torque wrench will verify the proper torque has been achieved.

NOTE: Make sure the alignment teeth (drawing 2) are fully engaged in the slots on the opposite lug. Tighten all nuts to the recommended torque as directed on the product label for each clamp size. Ensure nuts are tightened as evenly as possible.

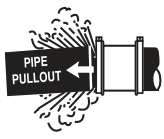



After the product is secured in place, drill a hole in the pipe through the tapped clamp OUTLET, according to your specs. Afterwards, check the torque again.

STEP 9

Recharge the line and check for leaks. If any leakage across the seal end is evident, reduce the pressure in the line and increase the labeled torque of the bolts up to 20%.



<p>⚠ WARNING</p> 	<p>This product does not restrain axial pipe movement. Proper anchorage of the pipe is required if this product is used as a coupling. Failure to anchor the pipe ends could result in the escape of line content, and may cause property damage, serious injury or death.</p>	<p>⚠ WARNING</p> 	<p>Caution: This product is not intended for use on natural gas piping, or any other type of gas piping. To do so could result in escaping gas that could ignite and cause property damage, serious injury or death.</p>
---	--	---	---

HYMAX[®]

Repair the past. Connect the future.

 **KRAUSZ** is the creator of HYMAX

331SW 57TH AVENUE, OCALA, FLORIDA 34474

TEL: 855-457-2879 | 855-4KRAUSZ

FAX: 352-304-5787

info@krauszusa.com | www.krauszusa.com

This product is protected under a registered patent. See Krausz USA website for details. Copyright © 2017 Krausz Industries Ltd., All rights reserved

II0171 REV A