

# INSTALLATION INSTRUCTIONS

**HYMAX**<sup>®</sup>

Repair the past. Connect the future.

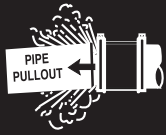
**KRAUSZ** is the creator of HYMAX

# HYMAX VERSA<sup>®</sup>

(1.5"-70")



## WARNING



**THIS PRODUCT DOES NOT RESTRAIN AXIAL PIPE MOVEMENT. PROPER ANCHORAGE OF THE PIPE IS REQUIRED IF THIS PRODUCT IS USED AS A COUPLING. FAILURE TO ANCHOR THE PIPE ENDS COULD RESULT IN THE ESCAPE OF LINE CONTENT, AND MAY CAUSE PROPERTY DAMAGE, SERIOUS INJURY OR DEATH.**



**CAUTION: THIS PRODUCT IS NOT INTENDED FOR USE ON NATURAL GAS PIPING, OR ANY OTHER TYPE OF GAS PIPING. TO DO SO COULD RESULT IN ESCAPING GAS THAT COULD IGNITE AND CAUSE PROPERTY DAMAGE, SERIOUS INJURY OR DEATH.**



## IMPORTANT

**THE HYMAX VERSA WRAP-AROUND COUPLING** may be used as a non-restraining stab type coupling or as a wrap around repair clamp. Do not disassemble the product.

**LUBRICATION OF PRODUCT AND PIPE.** Except steel, PVC, and PE pipes, all rough-surfaced pipes must be lubricated with a water-based lubricant in order to achieve a proper seal. Do not lubricate PVC, Steel or PE pipe surface.

**DO NO LUBRICATE BOLTS AND NUTS.** Bolts are pre-lubricated with a MAG (Molecular anti-galling) coating. Greasing bolts or nuts voids manufacturer's warranty.

**USE TORQUE WRENCH TO TIGHTEN THE BOLTS.** A torque wrench will assure a proper torque has been applied to the HYMAX Versa. Do not use other tools to tighten the coupling's bolts!

**TRANSITION CAPABILITY.** The HYMAX VERSA can transition between two pipe ends with a maximum outside diameter difference as indicated on the product label.

# PREPARE PRODUCT AND PIPE FOR INSTALLATION:

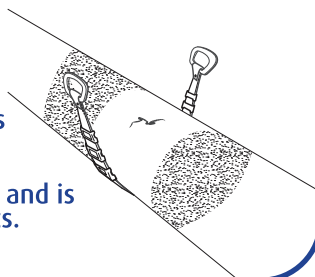
When HYMAX VERSA is used as a wrap-around repair coupling.  
(for connect function see page 4)

1

### CLEAN AND DESCALE THE PIPE

Make sure that:

- The pipe is clear from debris and defects.
- The pipe is not out of round and is free of scratches, dents, flats.

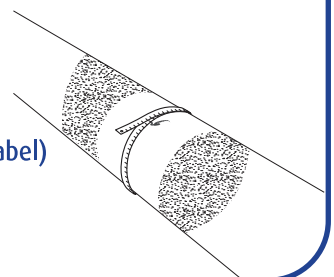


2

### MEASURE THE PIPES' OD TWICE

Make sure that:

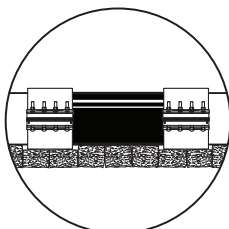
The product working range (as indicated on the product's label) will fit the pipe properly.



3

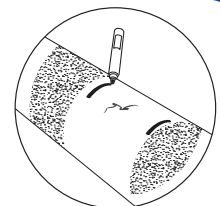
### MARK THE PIPE

At an even distance from the break or leak, according to the length of the Hymax Versa



Make sure that the pipe is properly supported.

**NOTE:** The HYMAX VERSA is not designed to carry the weight of the pipe by itself.



# INSTALLATION OF THE HYMAX VERSA

4

## HYMAX VERSA SIZES AND GASKETS:

PRODUCT SIZE	GASKET TYPE
1.5"-5"	Single gasket
6"-24"	Two layer gasket
26"-70"	Single gasket

FOR SIZES 1.5"-5" AND 26"-70" GO TO STAGE 5

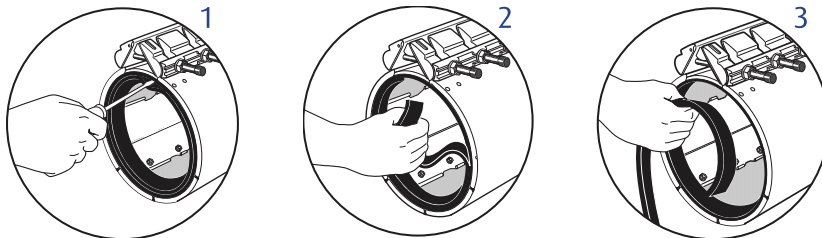
### FOR SIZES 6"-24" ONLY

The Hymax Versa has two gaskets; a removable inner gasket and a hydraulically-assisted outer gasket. The inner gasket can be removed to accommodate larger OD pipes.

DO NOT remove the inner gasket unless the OD falls within the upper range. The proper range sizes are shown on the product label.



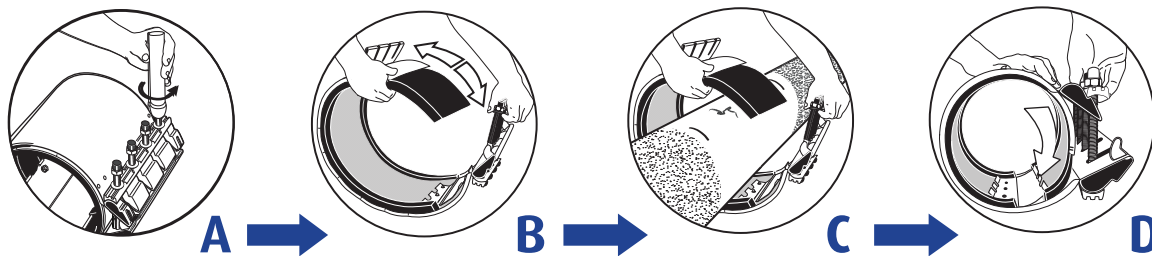
If the inner layer of the gasket must be removed fold the inner layer, break the parting line by inserting a screwdriver between the two layers, and pull the layer out.



If removal of the inner layer gasket is required, it must be removed from BOTH ENDS of the HYMAX VERSA. Otherwise, the product might not seal properly and the product warranty is voided.

5

## LOOSEN THE HYMAX VERSA NUTS BUT DO NOT DISASSEMBLE COMPLETELY



(A) Loosen the bolts.

(B) Grasp the side compression beam, and unlatch it from the lug

(C) Open up the HYMAX Versa fully while positioning it over the leak

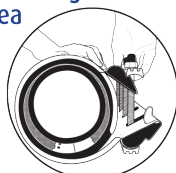
(D) Wrap the HYMAX Versa around the pipe

6

## CENTER THE HYMAX VERSA OVER THE INSTALLATION AREA

Fully rotate the Hymax Versa around the pipe by pulling the side compression beam over, underneath, and back around the pipe.

NOTE: The Hymax Versa has sufficient range to be assembled next to the damaged area and slide over the break as long as the pipe has been lubricated with a water-based lubricant.



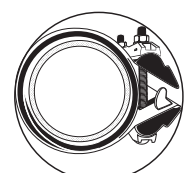
7

## FINAL LOCATION OF PRODUCT

Push down the side compression beam over the lug assembly to its second final position.

NOTE: Make sure you hear 2 clicks!

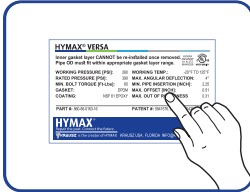
Make sure the tapered end of the gasket is on the surface of the pipe and is smoothly positioned in place.



**8****TIGHTEN**

Tighten all nuts, working from the center of the lug outward. Re-check that proper torque has been reached (drawing 1). Make sure the alignment teeth are fully engaged in the slots on the opposite lug (drawing 2).

**NOTE:** Sizes 26"-70" have two closing mechanisms. Tighten the bolts in both mechanisms in an alternating pattern.



1



2

**9****RECHARGE**

Recharge the line and check for leaks. If any leakage is evident, reduce the pressure in the line and increase bolt torque up to 50%. Verify again there are no leaks along with the seal.

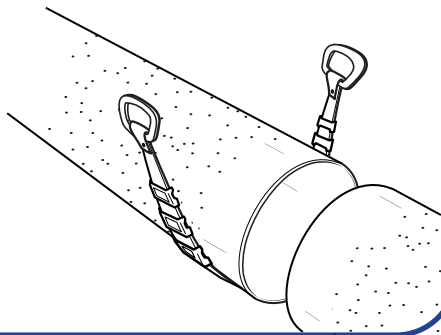
## PREPARE PRODUCT AND PIPE FOR INSTALLATION:

When Hymax Versa is used as a Coupling for a connect (Stab-Type) function:

**1****CLEAN AND DESCALE THE PIPE**

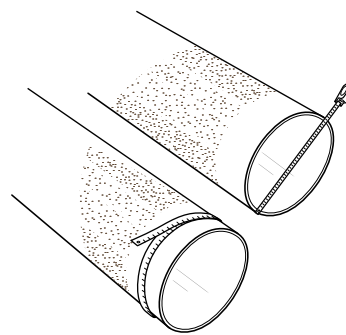
Make sure that:

- The pipe is clear from debris and defects.
- The pipe is not out of round and is free of scratches, dents, flats.

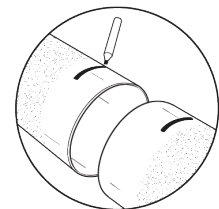
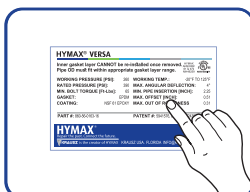
**2****MEASURE THE PIPES' OD TWICE**

Make sure that:

The Hymax Versa size range (as indicated on the product's label) will fit the pipe properly.

**3****MARK THE PIPE**

Mark the 2 pipes according to the MIN. STAB DEPTH indicated on the product label



# 4

## HYMAX VERSA SIZES AND GASKETS:

PRODUCT SIZE	GASKET TYPE
1.5"-5"	Single gasket
6"-24"	Two layer gasket
26"-70"	Single gasket

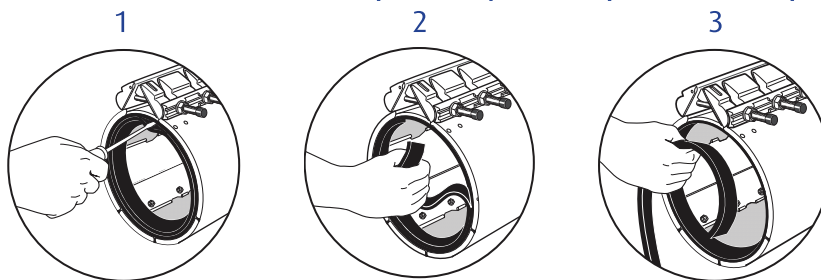
FOR SIZES 1.5"-5" AND 26"-70" GO TO STAGE 5

FOR SIZES 6"-24" ONLY

The Hymax Versa has two gaskets; a removable inner gasket and a hydraulically-assisted outer gasket. The inner gasket can be removed to accommodate larger OD pipes.

DO NOT remove the inner gasket unless the OD falls within the upper range of the Hymax Versa. The proper range sizes are shown on the product label.

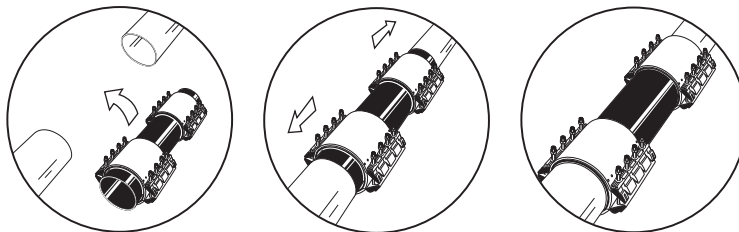
If the inner layer of the gasket must be removed fold the inner layer, break the parting line by inserting a screwdriver between the two layers, and pull the layer out of the Hymax Versa.



If removal of the inner layer gasket be required, it must be removed from BOTH ENDS of the HYMAX VERSA. Otherwise, the product might not seal properly and the product warranty is voided.

# 5

**POSITION THE HYMAX VERSA:** Place the HYMAX Versa on the replacement pipe and lower the pipe and the Hymax Versa wrap around couplings into the ditch. Slide The Hymax Versa outward so that they are centered over the area to be joined covering the marks on the pipes. Make sure that the pipes are not touching each other inside the body of the HYMAX VERSA.

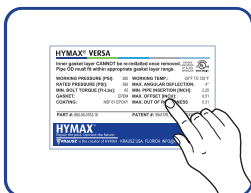


# 6

## TIGHTEN

Tighten all of the nuts evenly, working from the center of the lug assembly towards the end of the HYMAX VERSA. Verify again they are closed to the torque specified on the product label.

\* For sizes 26"-70" – tighten the 2 closing mechanisms in an alternating pattern.



# 7

## RECHARGE

Recharge the line and check for leaks. If any leakage across the seal end is evident, reduce the pressure in the line and increase the labeled torque of the bolts by up to 50%.

# HYMAX<sup>®</sup>

Repair the past. Connect the future.

---

 **KRAUSZ** is the creator of HYMAX

331SW 57TH AVENUE, OCALA, FLORIDA 34474 **TEL:** 855-457-2879 | 855-4KRAUSZ **FAX:** 352-304-5787