

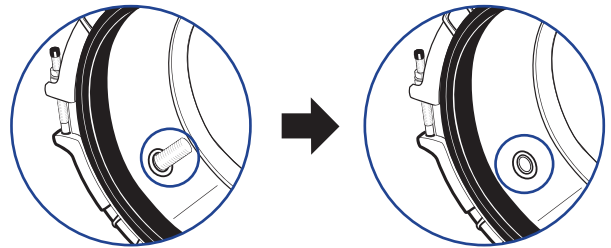
CENTERING PINS REPLACEMENT

DO NOT DISASSEMBLE THE COUPLING. DO NOT LUBRICATE THE BOLTS.

USE OF REPLACEMENT CENTERING PINS

These pins are to be used ONLY in HYMAX coupling and HYMAX Long Body products, sizes 14" and greater.

NOMINAL SIZE	Replacement Pins
14"	2
16" - 28"	3
30" and up	5



Conditions for Use

The two connecting pipes MUST HAVE identical outside diameters (OD). Otherwise you MUST use the longer set of centering pins that comes already inside the product when shipped.

Warning

Use of shorter replacement centering pins when connecting pipes of different OD will not prevent the coupling from moving on the pipe and will void the product warranty.

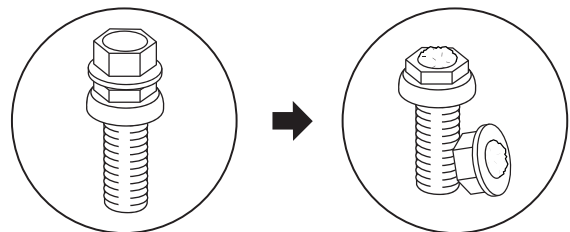
Instructions to Install Replacement

STEP 1 Each centering pin has a CIRCLIP preventing it from being pulled out. Remove all CIRCLIPS.

STEP 2 Unscrew existing centering pins.

STEP 3 Replacement centering pins have breakable head. Screw in replacement pins until head breaks off.

NOTE: Head breaks off at approximately 30 lbs-ft.



HYMAX[®]

Repair the past. Connect the future.

 **KRAUSZ** is the creator of HYMAX

331SW 57TH AVENUE, OCALA, FLORIDA 34474

TEL: 855-457-2879 | 855-4KRAUSZ

FAX: 352-304-5787

info@krauszusa.com | www.krauszusa.com