

HYMAX

a **MUELLER** brand

PIPE REPAIR CATALOG



JOIN



REPAIR



RESTRAIN



TAP

MUELLER

HYMAX® 2

HYMAX 2 Flip Gasket - the Next Generation Wide-Range Coupling with No-Tear Gasket

The wide range HYMAX 2 coupling features a patented, hydraulically assisted gasket that can easily flip in or out to accommodate different pipe ODs, allowing for faster and more efficient installations. The HYMAX 2 is a ready to use, out of the box stab fit coupling suitable for most pipe types.

SPHERICAL SPACERS

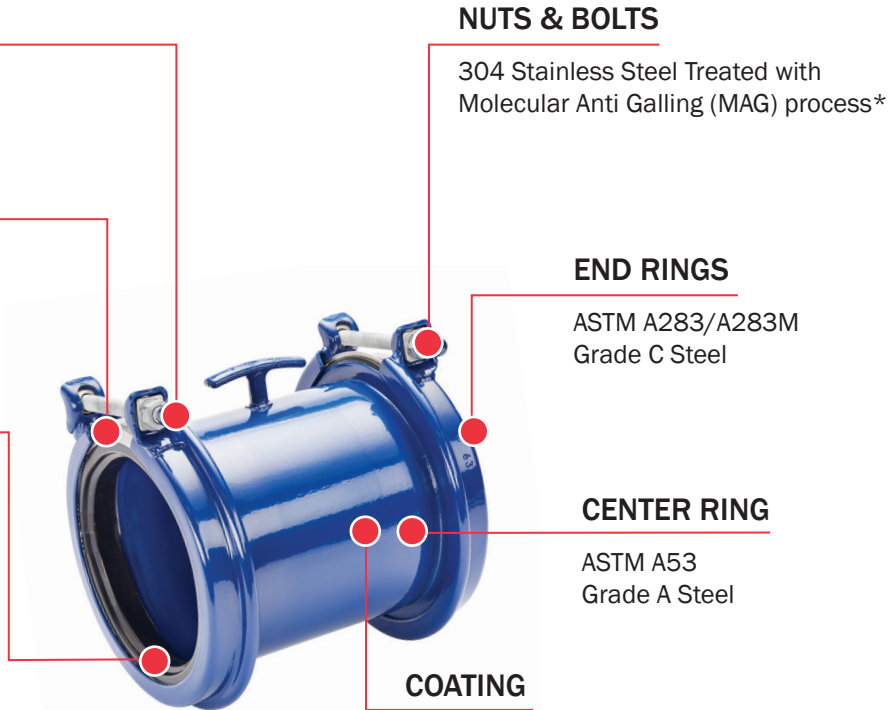
304 Stainless Steel*

GASKET BRIDGE

304 Stainless Steel*

FLIP GASKET

EPDM compounded for water and sewage, meets NSF-61 and NSF-372 standards for contact with drinking water



NUTS & BOLTS

304 Stainless Steel Treated with Molecular Anti Galling (MAG) process*

END RINGS

ASTM A283/A283M
Grade C Steel

CENTER RING

ASTM A53
Grade A Steel

COATING

100% fusion bonded epoxy for enhanced corrosion protection. Average thickness 14 mil, meets NSF-61 and NSF-372 standards

* HYMAX 2 COUPLING sizes 1.5" - 12" and HYMAX 2 FLANGE ADAPTOR sizes 1.5" - 12" will soon be available in 316 Stainless Steel

FEATURES

- 2 Bolt Design
- Flip Gasket
- Continuous Dynamic Deflection
- Wide Working Range

BENEFITS

- Faster and easier installation saving time and money
- Flip gasket in or out! No accidental tearing out
- 4° per side minimizes risk of future pipe damage
- Reduces and simplifies inventory



DUCTILE IRON

CAST IRON

STEEL

COPPER

PE

PVC

ASBESTOS CEMENT*

GRP

* CAUTION - ASBESTOS AND OTHER MATERIALS MAY CAUSE CANCER AND DAMAGE TO LUNGS. DO NOT BREATHE DUST, AVOID CREATING DUST. Seek Expert Advice For Breathing Protection And Protective Equipment. Call OSHA 1-800-321-6742 for more information.



JOIN



REPAIR



RESTRAIN



TAP

HYMAX 2 WIDE RANGE COUPLING

Wide-range HYMAX 2 Coupling, used for section replacement, connects two pipes of the same or different outside diameter and materials, up to 1.3" range.



When XX = 54 - Fasteners are 304 Stainless Steel
 When XX = 94 - Fasteners are 316 Stainless Steel*

Nominal Pipe Size: 1.5" - 12"

ND (inch)	Overall Range (inch)	Range in Closed Gasket Position (inch)	Range in Open Gasket Position (inch)	Working Pressure (PSI)	Part Number
1.5	1.61 - 2.13	1.61 - 1.97	1.96 - 2.13	260	860-XX-0041-16
2	2.10 - 3.03	2.10 - 2.60	2.56 - 3.03	260	860-XX-0054-16
3	3.46 - 4.33	3.46 - 3.90	3.86 - 4.33	260	860-XX-0088-16
4	4.25 - 5.63	4.25 - 5.00	4.92 - 5.63	260	860-XX-0108-16
5	5.12 - 6.38	5.12 - 5.75	5.71 - 6.38	260	860-XX-0130-16
6	6.42 - 7.68	6.42 - 7.05	7.01 - 7.68	260	860-XX-0163-16
7	7.48 - 8.74	7.48 - 8.11	8.07 - 8.74	260	860-XX-0190-16
8	8.54 - 9.84	8.54 - 9.17	9.13 - 9.84	260	860-XX-0217-16
10	10.70 - 12.00	10.70 - 11.37	11.33 - 12.00	260	860-XX-0272-16
10	10.96 - 12.26	10.96 - 11.63	11.59 - 12.26	260	860-XX-0278-16
12	12.40 - 13.66	12.40 - 13.03	12.99 - 13.66	260	860-XX-0315-16
12	13.15 - 14.41	13.15 - 13.78	13.74 - 14.41	260	860-XX-0334-16

* Check for availability on 316 Stainless Steel fasteners

All products' gaskets are EPDM compounded for water and sewage, meets NSF-61 and NSF-372 standards for contact with drinking water

HYMAX 2 LONG BODY

Wide-range HYMAX 2 Long Body Coupling, used for pipe section replacement, connects two pipes of the same or different outside diameter and materials, covering a wider gap between the pipes, with up to up to 1.3" range.



Long couplings are typically used when there is uncertainty regarding the gap between the pipes.

Nominal Pipe Size: 1.5" - 12"

ND (inch)	Overall Range (inch)	Range in Closed Gasket Position (inch)	Range in Open Gasket Position (inch)	Working Pressure (PSI)	Part Number
1.5	1.61 - 2.13	1.61 - 1.97	1.96 - 2.13	260	862-54-0041-16
2	2.10 - 3.03	2.10 - 2.60	2.56 - 3.03	260	862-54-0054-16
3	3.46 - 4.33	3.46 - 3.90	3.86 - 4.33	260	862-54-0088-16
4	4.25 - 5.63	4.25 - 5.00	4.92 - 5.63	260	862-54-0108-16
5	5.12 - 6.38	5.12 - 5.75	5.71 - 6.38	260	862-54-0130-16
6	6.42 - 7.68	6.42 - 7.05	7.01 - 7.68	260	862-54-0163-16
7	7.48 - 8.74	7.48 - 8.11	8.07 - 8.74	260	862-54-0190-16
8	8.54 - 9.84	8.54 - 9.17	9.13 - 9.84	260	862-54-0217-16
10	10.70 - 12.00	10.70 - 11.37	11.33 - 12.00	260	862-54-0272-16
10	10.96 - 12.26	10.96 - 11.63	11.59 - 12.26	260	862-54-0278-16
12	12.40 - 13.66	12.40 - 13.03	12.99 - 13.66	260	862-54-0315-16
12	13.15 - 14.41	13.15 - 13.78	13.74 - 14.41	260	862-54-0334-16

HYMAX 2 FLANGE ADAPTOR AND FLANGE ADAPTOR LONG BODY



Wide-range HYMAX 2 Flange Adaptor connects any flanged device, such as valves, pumps and other devices, with a variety of pipe diameters and materials, up to 1.3" range.

HYMAX 2 Flange Adaptor

When XX = 54 - Fasteners are 304 Stainless Steel

When XX = 94 - Fasteners are 316 Stainless Steel*

Nominal Pipe Size: 1.5" - 12"

ND (inc h)	Flange (inch)	Overall Range (inch)	Range in Closed Gasket Position (inch)	Range in Open Gasket Position (inch)	Working Pressure (PSI)	Part Number
1.5	1.5	1.61 - 2.13	1.61 - 1.97	1.96 - 2.13	175	874-XX-01004112
2	2	2.10 - 3.03	2.10 - 2.60	2.56 - 3.03	175	874-XX-02005412
3	3	3.46 - 4.33	3.46 - 3.90	3.86 - 4.33	175	874-XX-03008812
4	4	4.25 - 5.63	4.25 - 5.00	4.92 - 5.63	175	874-XX-04010812
6	4	6.42 - 7.68	6.42 - 7.05	7.01 - 7.68	175	874-XX-04016312
5	5	5.12 - 6.38	5.12 - 5.75	5.71 - 6.38	175	874-XX-05013012
4	6	4.25 - 5.63	4.25 - 5.00	4.92 - 5.63	175	874-XX-06010812
5	6	5.12 - 6.38	5.12 - 5.75	5.71 - 6.38	175	874-XX-06013012
6	6	6.42 - 7.68	6.42 - 7.05	7.01 - 7.68	175	874-XX-06016312
8	6	8.54 - 9.84	8.54 - 9.17	9.13 - 9.84	175	874-XX-06021712
7	8	7.48 - 8.74	7.48 - 8.11	8.07 - 8.74	175	874-XX-08019012
8	8	8.54 - 9.84	8.54 - 9.17	9.13 - 9.84	175	874-XX-08021712
10	8	10.96 - 12.26	10.96 - 11.63	11.59 - 12.26	175	874-XX-08027812
12	8	12.40 - 13.66	12.40 - 13.03	12.99 - 13.66	175	874-XX-08031512
12	8	13.15 - 14.41	13.15 - 13.78	13.74 - 14.41	175	874-XX-08033412
10	10	10.70 - 12.00	10.70 - 11.37	11.33 - 12.00	175	874-XX-10027212
10	10	10.96 - 12.26	10.96 - 11.63	11.59 - 12.26	175	874-XX-10027812
12	12	12.40 - 13.66	12.40 - 13.03	12.99 - 13.66	175	874-XX-12031512
12	12	13.15 - 14.41	13.15 - 13.78	13.74 - 14.41	175	874-XX-12033412
12	14	13.15 - 14.41	13.15 - 13.78	13.74 - 14.41	175	874-XX-14033412

HYMAX 2 FLANGE ADAPTOR LONG BODY

ND (inch)	Flange (inch)	Overall Range (inch)	Range in Closed Gasket Position (inch)	Range in Open Gasket Position (inch)	Working Pressure (PSI)	Part Number
2	2	2.10 - 3.03	2.10 - 2.60	2.56 - 3.03	175	974-54-02005412
3	3	3.46 - 4.33	3.46 - 3.90	3.86 - 4.33	175	974-54-03008812
4	4	4.25 - 5.63	4.25 - 5.00	4.92 - 5.63	175	974-54-04010812
5	5	5.12 - 6.38	5.12 - 5.75	5.71 - 6.38	175	974-54-05013012
5	6	5.12 - 6.38	5.12 - 5.75	5.71 - 6.38	175	974-54-06013012
6	6	6.42 - 7.68	6.42 - 7.05	7.01 - 7.68	175	974-54-06016312
7	8	7.48 - 8.74	7.48 - 8.11	8.07 - 8.74	175	974-54-08019012
8	8	8.54 - 9.84	8.54 - 9.17	9.13 - 9.84	175	974-54-08021712
10	10	10.70 - 12.00	10.70 - 11.37	11.33 - 12.00	175	974-54-10027212
10	10	10.96 - 12.26	10.96 - 11.63	11.59 - 12.26	175	974-54-10027812
12	12	12.40 - 13.66	12.40 - 13.03	12.99 - 13.66	175	974-54-12031512
12	12	13.15 - 14.41	13.15 - 13.78	13.74 - 14.41	175	974-54-12033412

* Check for availability on 316 Stainless Steel fasteners

HYMAX FA LONG BODY is currently available with 304 Stainless Steel fasteners only

HYMAX 2 CATHODIC

The HYMAX 2 Cathodic coupling is fitted with a single connection point allowing for electrical continuity through the entire coupling. This feature provides a single connection point for adding sacrificial anodes for additional corrosion protection. The Cathodic connection point is ready to use, out of the box without any assembly needed.



Nominal Pipe Size: 2" - 12"

ND (inch)	Overall Range (inch)	Range in Closed Gasket Position (inch)	Range in Open Gasket Position (inch)	Working Pressure (PSI)	Part Number
2	2.10 - 3.03	2.10 - 2.60	2.56 - 3.03	260	888-54-0054-16
4	4.25 - 5.63	4.25 - 5.00	4.92 - 5.63	260	888-54-0108-16
5	5.12 - 6.38	5.12 - 5.75	5.71 - 6.38	260	888-54-0130-16
6	6.42 - 7.68	6.42 - 7.05	7.01 - 7.68	260	888-54-0163-16
7	7.48 - 8.74	7.48 - 8.11	8.07 - 8.74	260	888-54-0190-16
8	8.54 - 9.84	8.54 - 9.17	9.13 - 9.84	260	888-54-0217-16
10	10.70 - 12.00	10.70 - 11.37	11.33 - 12.00	260	888-54-0272-16
10	10.96 - 12.26	10.96 - 11.63	11.59 - 12.26	260	888-54-0278-16
12	12.40 - 13.66	12.40 - 13.03	12.99 - 13.66	260	888-54-0315-16
12	13.15 - 14.41	13.15 - 13.78	13.74 - 14.41	260	888-54-0334-16

HYMAX 2 REDUCER

Wide-range HYMAX 2 Reducer joins pipes of different nominal sizes and materials. Each side has a working range of up to 1.3".



Nominal Pipe Size: 1.5" - 12"

ND (inch)	Overall Range (inch)	Range in Closed Gasket Position (inch)	Range in Open Gasket Position (inch)	Overall Range 2 (inch)	Range in Closed Gasket Position 2 (inch)	Range in Open Gasket Position 2 (inch)	Working Pressure (PSI)	Part Number
1.5 x 2	1.61 - 2.13	1.61 - 1.97	1.96 - 2.13	2.10 - 3.03	2.10 - 2.60	2.56 - 3.03	260	861540041005416
2 x 3	2.10 - 3.03	2.10 - 2.60	2.56 - 3.03	3.46 - 4.33	3.46 - 3.90	3.86 - 4.33	260	861540054008816
3 x 4	3.46 - 4.33	3.46 - 3.90	3.86 - 4.33	4.25 - 5.63	4.25 - 5.00	4.92 - 5.63	260	861540088010816
4 x 5	4.25 - 5.63	4.25 - 5.00	4.92 - 5.63	5.12 - 6.38	5.12 - 5.75	5.71 - 6.38	260	861540108013016
4 x 6	4.25 - 5.63	4.25 - 5.00	4.92 - 5.63	6.42 - 7.68	6.42 - 7.05	7.01 - 7.68	260	861540108016316
5 x 6	5.12 - 6.38	5.12 - 5.75	5.71 - 6.38	6.42 - 7.68	6.42 - 7.05	7.01 - 7.68	260	861540130016316
6 x 7	6.42 - 7.68	6.42 - 7.05	7.01 - 7.68	7.48 - 8.74	7.48 - 8.11	8.07 - 8.74	260	861540163019016
6 x 8	6.42 - 7.68	6.42 - 7.05	7.01 - 7.68	8.54 - 9.84	8.54 - 9.17	9.13 - 9.84	260	861540163021716
7 x 8	7.48 - 8.74	7.48 - 8.11	8.07 - 8.74	8.54 - 9.84	8.54 - 9.17	9.13 - 9.84	260	861540190021716
8 x 10	8.54 - 9.84	8.54 - 9.17	9.13 - 9.84	10.70 - 12.00	10.70 - 11.37	11.33 - 12.00	260	861540217027216
8 x 12	8.54 - 9.84	8.54 - 9.17	9.13 - 9.84	12.40 - 13.66	12.40 - 13.03	12.99 - 13.66	260	861540217031516
10 x 10	10.70 - 12.00	10.70 - 11.37	11.33 - 12.00	10.96 - 12.26	10.96 - 11.63	11.59 - 12.26	260	861540272027816
10 x 12	10.70 - 12.00	10.70 - 11.37	11.33 - 12.00	12.40 - 13.66	12.40 - 13.03	12.99 - 13.66	260	861540272031516
10 x 12	10.96 - 12.26	10.96 - 11.63	11.59 - 12.26	12.40 - 13.66	12.40 - 13.03	12.99 - 13.66	260	861540278031516
10 x 12	10.96 - 12.26	10.96 - 11.63	11.59 - 12.26	13.15 - 14.41	13.15 - 13.78	13.74 - 14.41	260	861540278033416
12 x 12	12.40 - 13.66	12.40 - 13.03	12.99 - 13.66	13.15 - 14.41	13.15 - 13.78	13.74 - 14.41	260	861540315033416

HYMAX 2 FLANGED OUTLET

HYMAX 2 Flanged Outlet provides effective outlet solutions for a wide variety of piping types and diameters, joining pipes made of the same or different materials, and with a working range of up to 1.3".



Nominal Pipe Size: 3" - 12"

ND (inch)	Overall Range (inch)	Range in Closed Gasket Position (inch)	Range in Open Gasket Position (inch)	Working Pressure (PSI)	Part Number
3	3.46 - 4.33	3.46 - 3.90	3.86 - 4.33	175	875-54-15088-12
4	4.25 - 5.63	4.25 - 5.00	4.92 - 5.63	175	875-54-15108-12
6	6.42 - 7.68	6.42 - 7.05	7.01 - 7.68	175	875-54-15163-12
8	8.54 - 9.84	8.54 - 9.17	9.13 - 9.84	175	875-54-15217-12
10	10.70 - 12.00	10.70 - 11.37	11.33 - 12.00	175	875-54-15272-12
10	10.96 - 12.26	10.96 - 11.63	11.59 - 12.26	175	875-54-15278-12
12	12.40 - 13.66	12.40 - 13.03	12.99 - 13.66	175	875-54-15315-12
12	13.15 - 14.41	13.15 - 13.78	13.74 - 14.41	175	875-54-15334-12

HYMAX 2 THREADED OUTLET

HYMAX 2 Threaded Outlet provides effective outlet solutions for a wide variety of piping types and diameters, joining pipes made of the same or different materials, and with a working range of up to 1.3".



Nominal Pipe Size: 1.5" - 12"

ND (inch)	Overall Range (inch)	Range in Closed Gasket Position (inch)	Range in Open Gasket Position (inch)	Working Pressure (PSI)	Part Number
1.5	1.61 - 2.13	1.61 - 1.97	1.96 - 2.13	260	865-54-01041-16
2	2.10 - 3.03	2.10 - 2.60	2.56 - 3.03	260	865-54-XX054-16
3	3.46 - 4.33	3.46 - 3.90	3.86 - 4.33	260	865-54-XX088-16
4	4.25 - 5.63	4.25 - 5.00	4.92 - 5.63	260	865-54-XX108-16
6	6.42 - 7.68	6.42 - 7.05	7.01 - 7.68	260	865-54-XX163-16
8	8.54 - 9.84	8.54 - 9.17	9.13 - 9.84	260	865-54-XX217-16
10	10.70 - 12.00	10.70 - 11.37	11.33 - 12.00	260	865-54-XX272-16
10	10.96 - 12.26	10.96 - 11.63	11.59 - 12.26	260	865-54-XX278-16
12	12.40 - 13.66	12.40 - 13.03	12.99 - 13.66	260	865-54-XX315-16
12	13.15 - 14.41	13.15 - 13.78	13.74 - 14.41	260	865-54-XX334-16

For example 865-54-XX163-16 may be:

ND (inch)	Outlet (inch)	Outlet L1 (inch)	Part Number
6	1	1.18	865-54-01163-16
6	1.5	1.56	865-54-05163-16
6	2	1.69	865-54-02163-16
6	3	2.13	865-54-03163-16
6	4	2.36	865-54-04163-16

HYMAX GRIP®

Wide-Range Restraint Solutions

The HYMAX Grip products combine the patented technology of the HYMAX coupling with a unique restraint system to join plain end pipes while preventing any possible pipe movement. The unique radial gripping system and patented hydraulically assisted gasket will accommodate different pipe ODs, allowing for faster and more efficient installations. The HYMAX Grip, with its ductile iron body is a ready-to-use, out-of-the-box stab fit coupling suitable for most pipe types.

SPHERICAL SPACERS

Type 304 Stainless Steel*

GASKET BRIDGE

Type 304 Stainless Steel*

GRIP CHAIN

Restrains both metal & plastic pipes

GASKET

EPDM and NBR available, both are compounded for water and sewage. Meets NSF-61 and NSF-372 standards for contact with drinking water



NUTS & BOLTS

Type 304 Stainless Steel Rolled thread and anti-galling coating*

END RING

1.5" - 3" - Cast Steel
4" - 16" - Ductile Iron Casting

MIDDLE RING + T HANDLE

Ductile Iron Casting

COATING

100% fusion bonded epoxy for enhanced corrosion protection

Picture is based on HYMAX GRIP 4" - features may vary between different product sizes.

** HYMAX GRIP COUPLING sizes 1.5" - 12" and HYMAX GRIP FLANGE ADAPTOR sizes 1.5" - 12" will soon be available in 316 Stainless Steel hardware - Check for availability.*

FEATURES

- 2 Bolt Design
- Wide Working Range
- Continuous Dynamic Deflection
- Premium Materials
- Dual Gripping System - Mechanical and Hydraulic

BENEFITS

- Faster and easier installation saving time and money
- Accommodates different pipe OD, reduces and simplifies inventory
- 4° per side minimizes risk of future pipe damage
- Durable and re-usable with multiple material options
- Prevents axial motion - No need for Thrust Blocks



* 304SS and 316SS pipe schedule 10 and higher



HYMAX GRIP COUPLING RESTRAINT

The HYMAX Grip Coupling is available in sizes 1.5” to 12” for joining plain end pipe while preventing any possible pipe movement with its unique radial gripping system and patented hydraulically assisted gasket. The HYMAX Grip Coupling is a ready to use, out of the box stab fit coupling suitable for most pipe types.



Nominal Pipe Size: 1.5” - 12”

PRESSURES AND ΔT

ΔT - HDPE pipe expands and contracts with changes in temperature and exerts large pull-load forces on the coupling.

ΔT for HDPE pipe is the change in temperature the coupling can withstand when installed on HDPE pipe.

STANDARD PRESSURE GRIP

ND (inch)	Steel, DI, CI & PVC	HDPE	ΔT for HDPE SDR 9 (°F)
	Working Pressure (PSI)	Working Pressure (PSI)	
1.5/2	232	232	85
3	232	232	85
4	232	232	85
6	232	232	85
8	232	193	50
10	232	163	50
12	232	155	35

HIGH PRESSURE GRIP

ND (inch)	Steel, DI, CI, PVC & HDPE	ΔT for HDPE SDR 9 (°F)
	Working Pressure (PSI)	
4	250	100
6	250	100
8	250	100
10	250	100
12	250	70

PRODUCT TABLES

HYMAX GRIP

NOMINAL SIZE 1.5” - 3” (*)

For “XX” use

56 - Standard Pressure Grip with EPDM gasket

57 - Standard Pressure Grip with NBR Gasket

58 - High Pressure Grip with EPDM Gasket

59 - High Pressure Grip with NBR Gasket

96 - Standard Pressure Grip with EPDM Gasket and 316SS Hardware

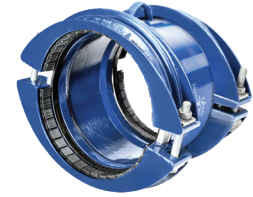
ND (inch)	Overall Range (inch)	Before Removing the Inner Layer (inch)	After Removing the Inner Layer (inch)	Part Number
1.5/2	1.54 - 2.64	1.54 - 2.20	2.17 - 2.64	890-XX-015039-16
3	2.32 - 3.43	2.32 - 2.99	2.95 - 3.43	890-XX-025059-16
3	3.15 - 4.17	3.15 - 3.74	3.70 - 4.17	890-XX-030080-16

HYMAX GRIP NOMINAL SIZE 4” - 12”

ND (inch)	Overall Range (inch)	Part Number
4	4.40 - 5.10	890-XX-04111-16
6	6.50 - 7.20	890-XX-06165-16
8	8.50 - 9.40	890-XX-08216-16
10	10.65 - 11.55	890-XX-10270-16
12	12.68 - 13.39	890-XX-12322-16

HYMAX GRIP LARGE DIAMETER

The HYMAX Grip Large Diameter Couplings are available in sizes 14" and 16" for joining plain end pipe while preventing any possible pipe movement with its unique radial gripping system and patented hydraulically assisted gasket. The HYMAX Grip coupling is a ready to use, out of the box stab fit coupling suitable for most pipe types.



Nominal Pipe Size: 14" - 16"

PRESSURES

ND (inch)	Steel, DI, CI, PVC & HDPE		
	Working Pressure (PSI)	Rated Pressure (PSI)	ΔT for HDPE SDR 9 ($^{\circ}F$)
14	250	500	50
16	250	500	50

PRODUCT TABLE

ND (inch)	Overall Range (inch)	Part Number
14	15.12 - 15.75	890-56-14384-17
16	17.25 - 17.88	890-56-16438-17

HYMAX GRIP SWIVELJOINT

The HYMAX Grip Swiveljoint is a restraint coupling that can be rotated to provide any angle needed to join and restrain two plain end pipes. The HYMAX Grip Swiveljoint is a ready to use, out of the box and suitable for most pipe types.



Nominal Pipe Size: 4" - 12"

PRESSURES AND ΔT

ΔT - HDPE pipe expands and contracts with changes in temperature and exerts large pull-load forces on the coupling.

ΔT for HDPE pipe is the change in temperature the coupling can withstand when installed on HDPE pipe.

STANDARD PRESSURE GRIP

ND (inch)	Steel, DI, CI, PVC & HDPE	HDPE	ΔT for HDPE SDR 9 ($^{\circ}F$)
	Working Pressure (PSI)	Working Pressure (PSI)	
4	232	232	85
6	232	232	85
8	232	193	50
10	232	163	50
12	232	155	35

PRODUCT TABLE

HYMAX GRIP SWIVELJOINT NOMINAL SIZE 4" - 12"

ND (inch)	Overall Range (inch)	Part Number
4	4.40 - 5.10	892-56-04111-16
6	6.50 - 7.20	892-56-06165-16
8	8.50 - 9.40	892-56-08216-16
10	10.65 - 11.55	892-56-10270-16
12	12.68 - 13.39	892-56-12322-16

HYMAX GRIP FLANGE ADAPTER

The HYMAX Grip Flange adapter is designed to transition from a flanged device to a plain end pipe while providing restraint and preventing pipe pullout. The HYMAX Grip Flange Adapter is ready to use, out of the box without any assembly or disassembly required.



Nominal Pipe Size: 1.5" - 12"

PRESSURES AND ΔT

ΔT - HDPE pipe expands and contracts with changes in temperature and exerts large pull-load forces on the coupling.

ΔT for HDPE pipe is the change in temperature the coupling can withstand when installed on HDPE pipe.

STANDARD PRESSURE GRIP

ND (inch)	Steel, DI, CI & PVC	HDPE	ΔT for HDPE SDR 9 ($^{\circ}F$)
	Working Pressure (PSI)	Working Pressure (PSI)	
1.5/2	232	232	85
3	232	232	85
4	232	232	85
6	232	232	85
8	232	193	50
10	232	163	50
12	232	155	35

HIGH PRESSURE GRIP

ND (inch)	Steel, DI, CI, PVC & HDPE	ΔT for HDPE SDR 9 ($^{\circ}F$)
	Working Pressure (PSI)	
4	250	100
6	250	100
8	250	100
10	250	100
12	250	70

PRODUCT TABLES

HYMAX GRIP FLANGE ADAPTOR NOMINAL SIZE 1.5" - 2.5" (*)

For "XX" use

56 - Standard Pressure Grip with EPDM gasket
57 - Standard Pressure Grip with NBR Gasket

96 - Standard Pressure Grip with EPDM Gasket and 316SS Hardware

ND (inch)	Flange Oval (inch)	Overall Range (inch)	Before Removing the Inner Layer (inch)	After Removing the Inner Layer (inch)	Part Number
1.5/2	1.5	1.54 - 2.64	1.54 - 2.20	2.17 - 2.64	130-XX-015039-15-16
1.5/2	2	1.54 - 2.64	1.54 - 2.20	2.17 - 2.64	130-XX-015039-20-16
2.5	2	2.32 - 3.43	2.32 - 2.99	2.95 - 3.43	130-XX-025059-20-16

HYMAX GRIP FLANGE ADAPTOR NOMINAL SIZE 4" - 12"

For "XX" use

56 - Standard Pressure Grip with EPDM gasket
57 - Standard Pressure Grip with NBR Gasket
58 - High Pressure Grip with EPDM Gasket

59 - High Pressure Grip with NBR Gasket
96 - Standard Pressure Grip with EPDM Gasket and 316SS Hardware

ND (inch)	Overall Range (inch)	Part Number
4	4.40 - 5.10	130-XX-04111-16
6	6.50 - 7.20	130-XX-06165-16
8	8.50 - 9.40	130-XX-08216-16
10	10.65 - 11.55	130-XX-10270-16
12	12.68 - 13.39	130-XX-12322-16

HYMAX GRIP FLANGE ADAPTOR NOMINAL SIZE 3" (*)

ND (inch)	Overall Range (inch)	Before Removing the Inner Layer (inch)	After Removing the Inner Layer (inch)	Part Number
3	3.15 - 4.17	3.15 - 3.74	3.70 - 4.17	130-XX-030080-16

HYMAX GRIP END CAP

The HYMAX Grip End Cap is designed to temporarily or permanently cap a plain end pipe while providing restraint and preventing pipe pullout. The HYMAX Grip End Cap features a 2" NPT outlet as standard for flushing or adding a blow off valve. The HYMAX Grip Flange Adapter is ready to use, out of the box without any assembly or disassembly required.



Nominal Pipe Size: 1.5" - 12"

STANDARD PRESSURE GRIP

ND (inch)	Steel, DI, CI & PVC	HDPE
	Working Pressure (PSI)	Working Pressure (PSI)
1.5/2	232	232
3	232	232
4	232	232
6	232	232
8	232	193
10	232	163
12	232	155

HIGH PRESSURE GRIP

ND (inch)	Steel, DI, CI, PVC & HDPE
	Working Pressure (PSI)
4	250
6	250
8	250
10	250
12	250

PRODUCT TABLES

HYMAX GRIP END CAP

NOMINAL SIZE 1.5" - 2.5" (*)

For "XX" use

56 - Standard Pressure Grip with EPDM gasket

57 - Standard Pressure Grip with NBR Gasket

58 - High Pressure Grip with EPDM Gasket

59 - High Pressure Grip with NBR Gasket

ND (inch)	Overall Range (inch)	Before Removing the Inner Layer (inch)	After Removing the Inner Layer (inch)	Part Number
1.5/2	1.54 - 2.64	1.54 - 2.20	2.17 - 2.64	867-XX-015039-16
3	2.32 - 3.43	2.32 - 2.99	2.95 - 3.43	867-XX-025059-16
3	3.15 - 4.17	3.15 - 3.74	3.70 - 4.17	867-XX-030080-16

HYMAX GRIP END CAP NOMINAL SIZE 4" - 12"

ND (inch)	Overall Range (inch)	Part Number
4	4.40 - 5.10	867-XX-04111-16
6	6.50 - 7.20	867-XX-06165-16
8	8.50 - 9.40	867-XX-08216-16
10	10.65 - 11.55	867-XX-10270-16
12	12.68 - 13.39	867-XX-12322-16

HYMAX GRIP REDUCER

The HYMAX Grip Reducer coupling is designed to transition two plain end pipes with different nominal diameters while providing restraint and preventing pipe pullout. The HYMAX Grip Reducer Coupling is ready to use, out of the box without any assembly or disassembly required.



Nominal Pipe Size: 1.5" - 12"

PRESSURES AND ΔT

ΔT - HDPE pipe expands and contracts with changes in temperature and exerts large pull-load forces on the coupling.

ΔT for HDPE pipe is the change in temperature the coupling can withstand when installed on HDPE pipe.

STANDARD PRESSURE GRIP

ND (inch)	Steel, DI, CI & PVC Working Pressure (PSI)	HDPE Working Pressure (PSI)	ΔT for HDPE SDR 9 ($^{\circ}F$)
1.5/2	232	232	85
3	232	232	85
4	232	232	85
6	232	232	85
8	232	193	50
10	232	163	50
12	232	155	35

HIGH PRESSURE GRIP

ND (inch)	Steel, DI, CI, PVC & HDPE Working Pressure (PSI)	ΔT for HDPE SDR 9 ($^{\circ}F$)
4	250	100
6	250	100
8	250	100
10	250	100
12	250	70

PRODUCT TABLES

HYMAX GRIP REDUCER NOMINAL SIZE 1.5" - 12" (*)

For "XX" use

56 - Standard Pressure Grip with EPDM gasket

57 - Standard Pressure Grip with NBR Gasket

58 - High Pressure Grip with EPDM Gasket

59 - High Pressure Grip with NBR Gasket

ND (inch)	Side 1			Side 2			Part Number
	Overall Range (inch)	Before Removing the Inner Layer (inch)	After Removing the Inner Layer (inch)	Overall Range (inch)	Before Removing the Inner Layer (inch)	After Removing the Inner Layer (inch)	
(1.5/2) x 2.5	1.54 - 2.64	1.54 - 2.20	2.17 - 2.64	2.32 - 3.43	2.32 - 2.99	2.95 - 3.43	863XX0039005916
2.5 x 3	2.32 - 3.43	2.32 - 2.99	2.95 - 3.43	3.15 - 4.17	3.15 - 3.74	3.70 - 4.17	863XX0059008016
3 x 4	3.15 - 4.17	3.15 - 3.74	3.70 - 4.17	4.40 - 5.10	NA	NA	863XX0080011116
4 x 6	4.40 - 5.10	NA	NA	6.50 - 7.20	NA	NA	863XX0111016516
6 x 8	6.50 - 7.20	NA	NA	8.50 - 9.40	NA	NA	863XX0165021616
8 x 10	8.50 - 9.40	NA	NA	10.65 - 11.55	NA	NA	863XX0216027016
10 x 12	10.65 - 11.55	NA	NA	12.68 - 13.39	NA	NA	863XX0270032216

HYMAX GRIP ELBOW

The HYMAX Grip Elbows are available in 45 and 90 degree configurations for change of direction between two plain end pipes while providing restraint and preventing pipe pullout. The HYMAX Grip Elbows reduce or eliminate the need for thrust blocks when there is a change of direction in the pipe line. The HYMAX Grip Elbow is ready to use, out of the box without any assembly or disassembly required.



Nominal Pipe Size: 4" - 12"
45° and 90°

PRESSURES AND ΔT

ΔT - HDPE pipe expands and contracts with changes in temperature and exerts large pull-load forces on the coupling.

ΔT for HDPE pipe is the change in temperature the coupling can withstand when installed on HDPE pipe.

STANDARD PRESSURE GRIP

ND (inch)	Steel, DI, CI & PVC	HDPE	ΔT for HDPE SDR 9 (°F)
	Working Pressure (PSI)	Working Pressure (PSI)	
4	232	232	85
6	232	232	85
8	232	193	50
10	232	163	50
12	232	155	35

PRODUCT TABLES

HYMAX GRIP ELBOW NOMINAL SIZE 4" - 12" 45°

ND (inch)	Overall Range (inch)	Part Number
4	4.40 - 5.10	893-56-04111-16
6	6.50 - 7.20	893-56-06165-16
8	8.50 - 9.40	893-56-08216-16
10	10.65 - 11.55	893-56-10270-16
12	12.68 - 13.39	893-56-12322-16

HYMAX GRIP ELBOW NOMINAL SIZE 4" - 12" 90°

ND (inch)	Overall Range (inch)	Part Number
4	4.40 - 5.10	894-56-04111-16
6	6.50 - 7.20	894-56-06165-16
8	8.50 - 9.40	894-56-08216-16
10	10.65 - 11.55	894-56-10270-16
12	12.68 - 13.39	894-56-12322-16

HYMAX GRIP CATHODIC

The HYMAX Grip Cathodic coupling is fitted with a single connection point allowing for electrical continuity through the entire coupling. This feature provides a single connection point for adding sacrificial anodes for additional corrosion protection. The Cathodic connection point is ready to use, out of the box without any assembly needed.



Nominal Pipe Size: 1.5" - 12"

The product is offered in several different configurations. Note that the "XX" marking in the Part Number should be replaced as directed:

Part Number 889-XX

56 Standard Pressure Grip with EPDM gasket

57 Standard Pressure Grip with NBR gasket

For example - 889-XX-015039-16 should be read as 889-56-015039-16 for EPDM gasket and 889-57-015039-16 for NBR gasket.

PRESSURES

Steel, DI & CI

ND (inch)	Working Pressure (PSI)
1.5/2	232
3	232
4	232
6	232
8	232
10	232
12	232

PRODUCT TABLES

HYMAX GRIP CATHODIC NOMINAL SIZE 1.5" - 3"

ND (inch)	Overall Range (inch)	Before Removing the Inner Layer (inch)	After Removing the Inner Layer (inch)	Part Number
1.5/2	1.54 - 2.64	1.54 - 2.20	2.17 - 2.64	889-XX-015039-16
3	2.32 - 3.43	2.32 - 2.99	2.95 - 3.43	889-XX-025059-16
3	3.15 - 4.17	3.15 - 3.74	3.70 - 4.17	889-XX-030080-16

HYMAX GRIP CATHODIC NOMINAL SIZE 4" - 12"

ND (inch)	Overall Range (inch)	Part Number
4	4.40 - 5.10	889-XX-04111-16
6	6.50 - 7.20	889-XX-06165-16
8	8.50 - 9.40	889-XX-08216-16
10	10.65 - 11.55	889-XX-10270-16
12	12.68 - 13.39	889-XX-12322-16

HYMAX GRIP FLANGE ADAPTOR WITH CATHODIC PROTECTION

PRODUCT TABLES

HYMAX GRIP FLANGE ADAPTOR WITH CATHODIC PROTECTION 3"

ND (inch)	Overall Range (inch)	Before Removing the Inner Layer (inch)	After Removing the Inner Layer (inch)	Part Number
3	3.15 - 4.17	3.15 - 3.74	3.70 - 4.17	129-XX-030080-16

HYMAX GRIP FLANGE ADAPTOR WITH CATHODIC PROTECTION 4" - 12"

ND (inch)	Overall Range (inch)	Part Number
4	4.40 - 5.10	129-XX-04111-16
6	6.50 - 7.20	129-XX-06165-16
8	8.50 - 9.40	129-XX-08216-16
10	10.65 - 11.55	129-XX-10270-16
12	12.68 - 13.39	129-XX-12322-16

HYMAX GRIP CUT-IN SLEEVE

The first transition coupling that can connect to a mechanical joint while restraining the connecting plain pipe with only one bolt to tighten.



Nominal Pipe Size: 3" - 12"

PRESSURES AND ΔT

ΔT - HDPE pipe expands and contracts with changes in temperature and exerts large pull-load forces on the coupling.

ΔT for HDPE pipe is the change in temperature the coupling can withstand when installed on HDPE pipe.

*HDPE PIPE IPS & DIPS

ND (inch)	Working Pressure (PSI)	Max ΔT for SDR 9 ($^{\circ}F$)
3	232	85
4	232	85
6	232	85
8	193	50
10	163	50
12	155	35

PRODUCT TABLE

ND (inch)	Overall Range (inch)	Before Removing the Inner Layer (inch)	After Removing the Inner Layer (inch)	DMJ (inch)	L (inch)	G-Max Stab Depth (inch)	Bolts Qty. - Size	Torque (Ft-Lb)	Approx. Weight (Lbs)	Part Number
3	3.15 - 4.17	3.15 - 3.74	3.70 - 4.17	7.61	21.65	5.7	1 - M14	50	29.17	791-56-03080-16
4	4.40 - 5.10	X	X	9.22	21.65	7.5	1 - 5/8"	90	39.1	791-56-04111-16
6	6.50 - 7.20	X	X	11.12	21.65	8.2	1 - 5/8"	110	54.50	791-56-06165-16
8	8.50 - 9.40	X	X	13.36	21.65	6.2	1 - 3/4"	200	79.3	791-56-08216-16
10	10.65 - 11.55	X	X	15.61	21.65	6.3	1 - 3/4"	200	99.74	791-56-10270-16
12	12.68 - 13.39	X	X	17.88	21.65	7.5	1 - 3/4"	200	114.57	791-56-12322-16

HYMAX® HYJOINT

Dismantling Joint

The HYMAX Hyjoint Dismantling Joint is user friendly design for connecting two flanged devices with a center radial closing mechanism allowing for longitudinal adjustment between flanges.

GASKET EPDM

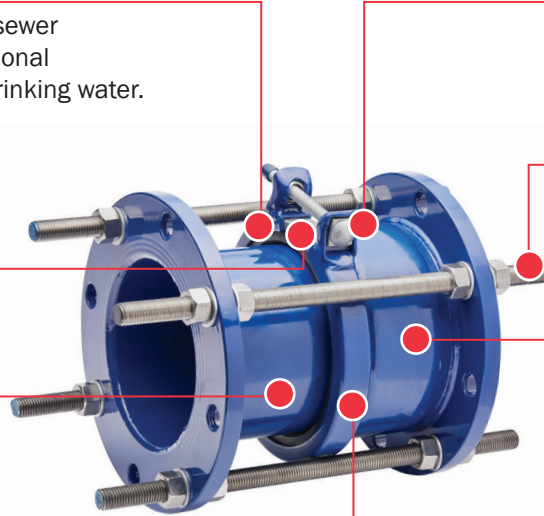
Compounded for water and sewer applications. Meets International standards for contact with drinking water.

GASKET BRIDGE

Type 304 Stainless Steel*

COATING

100% fusion bonded epoxy for enhanced corrosion protection. Average thickness 14 mil. Meets NSF-61 and NSF-372.



NUTS & BOLTS

304 Stainless Steel Rolled thread and antigalling coating

THREADED ROD & NUTS

304 Stainless Steel Rolled thread

BODY

2"-10" ASTM A53 Grade A Steel
12"-24" ASTM A283/A283M Grade C Steel

END RING

ASTM A283/A283M Grade C Steel

*Picture is based on HYJOINT 2" - 10". Features may vary between different product sizes.

FEATURES

- One bolt center closing ring
- Hydraulic Pressure Assisted Gasket
- Premium Materials

BENEFITS

- Quick and easy installation
- Standard EPDM gasket approved for drinking water
- Durable and re-usable providing superior corrosion resistance



STEEL

IPS PVC

HYMAX DISMANTLING JOINT



Nominal Pipe Size: 2"



Nominal Pipe Size: 3" - 24"

ND (inch)	Length Min (inch)	Length Max (inch)	Working Pressure (PSI)	Part Number
2	8.27	11.42	175	811-56-0002-12
3	8.27	11.42	175	811-56-0003-12
4	8.27	11.42	175	811-56-0004-12
5	8.27	11.42	175	811-56-0005-12
6	8.27	11.42	175	811-56-0006-12
8	11.02	16.14	175	811-56-0008-12
10	11.02	16.14	175	811-56-0010-12
12	11.02	16.14	175	811-56-0012-12
14	11.02	16.14	175	811-56-0014-12
16	13.78	18.90	175	811-56-0016-12
18	13.78	18.90	175	811-56-0018-12
20	13.78	18.90	175	811-56-0020-12
24	13.78	18.90	175	811-56-0024-12

HYMAX® LARGE DIAMETER (HLD)

HYMAX Large Diameter (HLD)

The wide range HYMAX Large Diameter Coupling features a patented hydraulically assisted double layer gasket with wide working ranges to accommodate different pipe ODs, allowing for faster and more efficient installations. The HYMAX Large Diameter is a ready to use, out of the box stab fit coupling suitable for most pipe types.

CENTER PIN

Centers coupling between pipe and prevents coupling from drifting.

END RING

14"-16" - ASTM A 283 / A283M Grade C Steel. (or Ductile Iron Casting ASTM A536 grade 60-40-18) 18"-24" - ASTM A 283 / A283M Grade C Steel.

ONLY 4 TOP-FACING BOLTS

Type 304 Stainless Steel Rolled thread and Molecular Anti Galling (MAG)

CENTER RING

ASTM A283/A283M Grade C Steel

GASKET BRIDGE

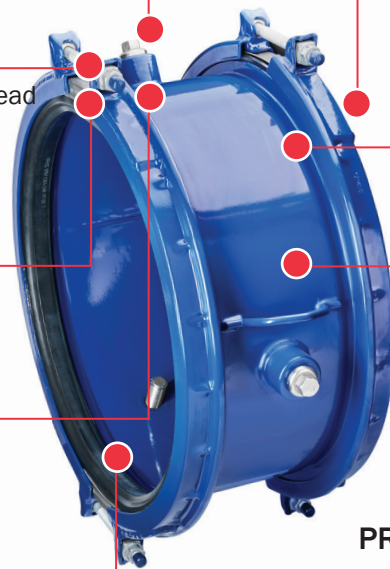
Type 304 Stainless Steel

COATING

100% fusion bonded epoxy for enhanced corrosion protection. Average thickness 14 mil., meets NSF-61 and NSF-372 standards

SPHERICAL SPACERS

Type 304 Stainless Steel



PROGRESSIVE HYDRAULICALLY-ASSISTED GASKET

EPDM, compounded for water and sewage, meets NSF-61 and NSF-372 standards for contact with drinking water

* Sizes 26"-60" with one-layer gasket available as Made To Order (MTO)

FEATURES

- 2 Bolt Design
- Double Layer Gasket
- Continuous Dynamic Deflection
- Wide Working Range

BENEFITS

- Faster and easier installation saving time and money
- Removable outer layer allowing transition between different pipe materials
- 4° per side minimizes risk of future pipe damage
- Reduces and simplifies inventory



* CAUTION - ASBESTOS AND OTHER MATERIALS MAY CAUSE CANCER AND DAMAGE TO LUNGS. DO NOT BREATHE DUST, AVOID CREATING DUST. Seek Expert Advice For Breathing Protection And Protective Equipment. Call OSHA 1-800-321-6742 for more information.

HYMAX LARGE DIAMETER (HLD) COUPLING



HYMAX LARGE DIAMETER NOMINAL SIZES 14"-24"

ND (inch)	Overall Range (inch)	Before Removal of Inner Layer (inch)	After Removal of Inner Layer (inch)	L (inch)	Bolts Qty. -Size	Torque (Ft-Lb)	Working Pressure (PSI)	Rated Pressure (PSI)	Approx. Weight (Lbs)	Part Number
14	15.00 - 17.10	15.00 - 16.10	16.02 - 17.10	11.6	4 -M16	150	260	390	92	860-56-0378-16P
16	17.10 - 19.20	17.10 - 18.19	18.11 - 19.20	11.6	4 -M16	150	260	390	101	860-56-0434-16P
18	19.20 - 21.30	19.20 - 20.29	20.21 - 21.30	11.6	4 -M16	150	232	350	101	860-56-0488-16P
20	19.60 - 21.70	19.60 - 20.69	20.61 - 21.70	11.6	4 -M16	150	232	350	105	860-56-0497-16P
20	21.25 - 23.35	21.25 - 22.35	22.27 - 23.35	11.6	4 -M16	150	232	350	110	860-56-0540-16P
24	23.85 - 25.95	23.85 - 24.96	24.88 - 25.95	11.6	4 -M16	150	232	350	120	860-56-0606-16P
24	24.60 - 26.70	24.60 - 25.67	25.59 - 26.70	11.6	4 -M16	150	232	350	120	860-56-0624-16P

HYMAX 26"-60" - MTO (MADE TO ORDER) AVAILABLE

HYMAX LARGE DIAMETER (HLD) LONG BODY COUPLING



HYMAX LARGE DIAMETER (HLD) COUPLING LONG BODY NOMINAL SIZES 14" - 24"

ND (inch)	Overall Range (inch)	Before Removal of Inner Layer (inch)	After Removal of Inner Layer (inch)	L (inch)	Bolts Qty. -Size	Torque (Ft-Lb)	Approx. Weight (Lbs)	Part Number
14	15.00 - 17.10	15.00 - 16.10	16.02 - 17.10	18	4 -M16	150	107	862-56-0378-16P
16	17.10 - 19.20	17.10 - 18.19	18.11 - 19.20	18	4 -M16	150	123	862-56-0434-16P
18	19.20 - 21.30	19.20 - 20.29	20.21 - 21.30	18	4 -M16	150	132	862-56-0488-16P
20	19.60 - 21.70	19.60 - 20.69	20.61 - 21.70	18	4 -M16	150	136	862-56-0497-16P
20	21.25 - 23.35	21.25 - 22.35	22.27 - 23.35	18	4 -M16	150	141	862-56-0540-16P
24	23.85 - 25.95	23.85 - 24.96	24.88 - 25.95	18	4 -M16	150	158	862-56-0606-16P
24	24.60 - 26.70	24.60 - 25.67	25.59 - 26.70	18	4 -M16	150	163	862-56-0624-16P

HYMAX LARGE DIAMETER (HLD) LONG BODY COUPLING NOMINAL SIZES 26" - 60"

ND (inch)	Overall Range (inch)	Before Removal of Inner Layer (inch)	After Removal of Inner Layer (inch)	Torque (Ft-Lbs)	Working Pressure (PSI)	Rated Pressure (PSI)	Approx. Weight (Lbs)	Part Number
30	31.50 - 33.60	31.50 - 32.60	32.50 - 33.60	250	130	195	256	862-56-0800-09P
36	37.90 - 40.00	37.90 - 39.00	38.90 - 40.00	300	110	165	278	862-56-0963-07P
42	43.90 - 46.00	43.90 - 45.00	44.90 - 46.00	300	95	142	335	862-56-1116-06P
48	50.40 - 52.50	50.40 - 51.50	51.40 - 52.50	350	80	120	342	862-56-1280-05P
60	61.10 - 63.20	61.10 - 62.20	62.10 - 63.20	350	65	97	405	862-56-1552-05P

HYMAX LARGE DIAMETER (HLD) FLANGE ADAPTOR AND LONG BODY FLANGE ADAPTOR



HYMAX LARGE DIAMETER FLANGE ADAPTOR NOMINAL SIZES 14"-24"

ND (mm)	Flange (inch)	Overall Range (inch)	Before Removal of Inner Layer (inch)	After Removal of Inner Layer (inch)	L (inch)	Bolts Qty. -Size	Torque (Ft-Lbs)	Approx. Weight (Lbs)	Part Number
14	14	15.00 - 17.10	15.00 - 16.10	16.02 - 17.10	15.1	2 -M16	150	115	874-56-14037812
16	16	17.10 - 19.20	17.10 - 18.19	18.11 - 19.20	15.1	2 -M16	150	125	874-56-16043412
18	18	19.20 - 21.30	19.20 - 20.29	20.21 - 21.30	15.1	2 -M16	150	135	874-56-18048812
20	20	21.25 - 23.35	21.25 - 22.35	22.27 - 23.35	15.2	2 -M16	150	155	874-56-20054012
24	24	23.85 - 25.95	23.85 - 24.96	24.88 - 25.95	15.4	2 -M16	150	184	874-56-24060612
24	24	24.60 - 26.70	24.60 - 25.67	25.59 - 26.70	15.4	2 -M16	150	187	874-56-24062412

HYMAX FLANGE ADAPTOR NOMINAL SIZE 26"-60" - MTO (MADE TO ORDER) IS AVAILABLE

HYMAX LARGE DIAMETER FLANGE ADAPTOR LONG BODY NOMINAL SIZES 14"-24"

ND (mm)	Flange (inch)	Overall Range (inch)	Before Removal of Inner Layer (inch)	After Removal of Inner Layer (inch)	L (inch)	Bolts Qty. -Size	Torque (Ft-Lbs)	Approx. Weight (Lbs)	Part Number
14	14	15.00 - 17.10	15.00 - 16.10	16.02 - 17.10	18.7	2 -M16	150	117	974-56-14037812
16	16	17.10 - 19.20	17.10 - 18.19	18.11 - 19.20	18.7	2 -M16	150	133	974-56-16043412
18	18	19.20 - 21.30	19.20 - 20.29	20.21 - 21.30	18.7	2 -M16	150	142	974-56-18048812
20	20	21.25 - 23.35	21.25 - 22.35	22.27 - 23.35	18.8	2 -M16	150	151	974-56-20054012
24	24	23.85 - 25.95	23.85 - 24.96	24.88 - 25.95	18.9	2 -M16	150	168	974-56-24060612
24	24	24.60 - 26.70	24.60 - 25.67	25.59 - 26.70	18.9	2 -M16	150	173	974-56-24062412

HYMAX FLANGE ADAPTOR LONG BODY NOMINAL SIZE 26"-60" - MTO (MADE TO ORDER) IS AVAILABLE

HYMAX REDUCER LARGE DIAMETER



HYMAX LARGE DIAMETER (HLD) REDUCER COUPLING

ND (inch)	Overall Range 1 (inch)	Closed Gasket Position (inch)	Open Gasket Position (inch)	Overall Range 2 (inch)	Closed Gasket Position (inch)	Open Gasket Position (inch)	Bolts Qty. -Size	L (inch)	Approx. Weight (Lbs)	Part Number
14 x 16	15.00 - 17.10	15.00 - 16.10	16.02 - 17.10	17.10 - 19.20	17.10 - 18.19	18.11 - 19.20	4 -M16	23.8	142	861560378043416
16 x 18	17.10 - 19.20	17.10 - 18.19	18.11 - 19.20	19.20 - 21.30	19.20 - 20.29	20.21 - 21.30	4 -M16	23.8	162	861560434048816
18 x 20	19.20 - 21.30	19.20 - 20.29	20.21 - 21.30	21.25 - 23.35	21.25 - 22.35	22.27 - 23.35	4 -M16	23.8	172	861560488054016
20 x 24	21.25 - 23.35	21.25 - 22.35	22.27 - 23.35	23.85 - 25.95	23.85 - 24.96	24.88 - 25.95	4 -M16	23.8	180	861560540060616
20 x 24	21.25 - 23.35	21.25 - 22.35	22.27 - 23.35	24.60 - 26.70	24.60 - 25.67	25.59 - 26.70	4 -M16	23.8	182	861560540062416

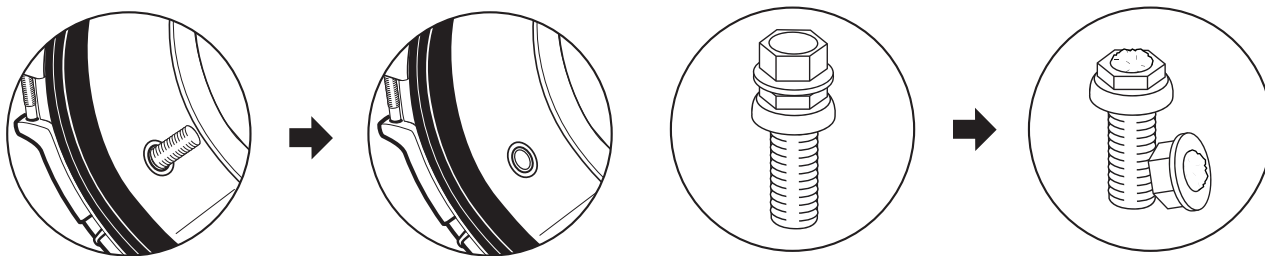
HYMAX REDUCER NOMINAL SIZE 26"-60" - MTO (MADE TO ORDER) IS AVAILABLE

HYMAX LARGE DIAMETER (HLD) COUPLING REPLACEMENT CENTERING PINS

Stainless Steel replacement bolts (pins) for HYMAX Large Diameter Couplings, sold individually with clip and o-ring.

Description	Part Number	For Coupling Size	Notes
Stainless Steel Centering Pin with O-Ring	100-56-00-1-M16-50	14" - 24"	Set includes: (1) bolt, O-ring, circle clip
	100-56-00-1-50	26" - 60"	

These short replacement pins or plugs do not protrude beyond the inner surface of the HYMAX coupling which allows no interference if the pipes need to be inserted further into the coupling. It is highly recommended these be used only when the two connecting pipes have same outside diameter. The pins have a breakaway bolt head designed to breakaway at 30 ft-lbs which prevents over tightening.



Description	Part Number	For Coupling Size	Notes
Plastic Pin (plug) with O-Ring	995-100-002	14"	2 plugs w/o-rings
	995-100-003	16" - 28"	3 plugs w/o-rings
	995-100-003	30" - 60"	5 plugs w/o-rings

HYMAX VERSA®

Coupling and Repair Solutions

The HYMAX Versa is a coupling that can wrap around damaged pipe usually repaired with the cut-and-replace technique while providing 3° per side of dynamic deflection to reduce the risk of damage caused by ground shifts. HYMAX Versa is made from stainless steel and has the flexibility to withstand harsh ground conditions to offer a durable repair solution. HYMAX Versa saves valuable inventory shelf-space, minimizes installation time, and is extremely user-friendly.

LUGS

Polycarbonate for regular pressure
304 Stainless Steel casting
(ASTM A-351-CF8) for some high
pressure product sizes

COMPRESSION BEAM

Precision Casting
Type 304 Stainless Steel

GASKET BRIDGE

Type 304 Stainless Steel*

NUTS & BOLTS

Type 304 Stainless Steel
Rolled thread and anti-galling coating

INNER PLATE

Type 304 Stainless Steel**

BODY

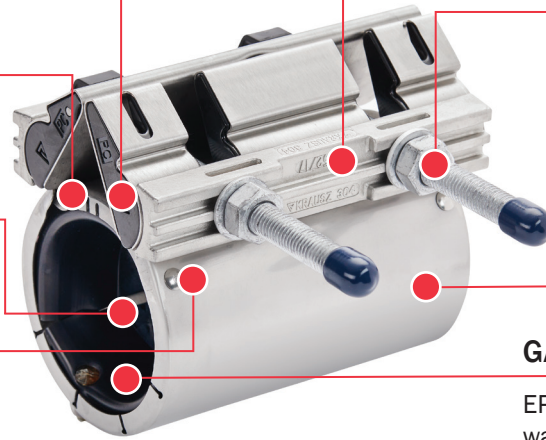
Type 304 Stainless Steel

REINFORCED BOLTS

Ultem Resin 1000
with set screw

GASKET

EPDM compounded for
water and sewage



Picture is based on HYMAX VERSA 1.5" - 12" - features may vary between different product sizes.

** Coated with Rilsan Nylon for sewage applications*

*** Inner plate not included in Versa Encapsulation.*

FEATURES

- Wide Working Range
- Unique, All-In-One Product
- Continuous Dynamic Deflection
- Durable Construction

BENEFITS

- Accommodates different pipe OD, reduces and simplifies inventory
- Stab fit, wrap around coupling or repair clamp for a variety of situations
- 3° per side minimizes risk of future pipe damage
- Weld-free all Stainless Steel for corrosion resistance



*** CAUTION - ASBESTOS AND OTHER MATERIALS MAY CAUSE CANCER AND DAMAGE TO LUNGS. DO NOT BREATHE DUST, AVOID CREATING DUST. Seek Expert Advice For Breathing Protection And Protective Equipment. Call OSHA 1-800-321-6742 for more information.**



HYMAX VERSA



Nominal Pipe Size: 1.5" - 3"

HYMAX VERSA 1.5" - 3", LENGTH 5.5"

ND (inch)	Overall Range (inch)	Working Pressure (PSI)	Part Number
1.5	1.77 - 2.24	232	111-56-0045-16
2	2.05 - 2.52	232	111-56-0052-16
2	2.32 - 2.79	232	111-56-0059-16
2.5	2.79 - 3.31	232	111-56-0071-16
3	3.19 - 3.67	232	111-56-0081-16

HYMAX VERSA 1.5" - 3" HIGH PRESSURE, LENGTH 5.5"

ND (inch)	Overall Range (inch)	Working Pressure (PSI)	Part Number
1.5	1.77 - 2.24	348	111-56-0045-24
2	2.05 - 2.52	348	111-56-0052-24
2	2.32 - 2.79	348	111-56-0059-24
2.5	2.79 - 3.31	348	111-56-0071-24
3	3.19 - 3.67	348	111-56-0081-24

HYMAX VERSA 1.5" - 3", LENGTH 11"

ND (inch)	Overall Range (inch)	Working Pressure (PSI)	Part Number
1.5	1.77 - 2.24	232	113-56-0045-16
2	2.05 - 2.52	232	113-56-0052-16
2	2.32 - 2.79	232	113-56-0059-16
2.5	2.79 - 3.31	232	113-56-0071-16
3	3.19 - 3.67	232	113-56-0081-16

HYMAX HYMAX VERSA 1.5" - 3" HIGH PRESSURE, LENGTH 11"

ND (inch)	Overall Range (inch)	Working Pressure (PSI)	Part Number
1.5	1.77 - 2.24	348	113-56-0045-24
2	2.05 - 2.52	348	113-56-0052-24
2	2.32 - 2.79	348	113-56-0059-24
2.5	2.79 - 3.31	348	113-56-0071-24
3	3.19 - 3.67	348	113-56-0081-24

HYMAX VERSA



Nominal Pipe Size: 1.5" - 12"

HYMAX VERSA 3" - 5", LENGTH 11"

ND (inch)	Overall Range (inch)	Working Pressure (PSI)	Part Number
3	3.42 - 4.3	232	283-56-0087-16
4	4.25 - 5.15	232	283-56-0108-16
4	4.44 - 5.35	232	283-56-0113-16
4	4.76 - 5.67	232	283-56-0121-16
5	5.43 - 6.3	232	283-56-0138-16
5	5.78 - 6.65	232	283-56-0147-16

HYMAX VERSA 3" - 5" HIGH PRESSURE, LENGTH 11"

ND (inch)	Overall Range (inch)	Working Pressure (PSI)	Part Number
3	3.42 - 4.3	348	283-56-0087-24
4	4.25 - 5.15	348	283-56-0108-24
4	4.44 - 5.35	348	283-56-0113-24
4	4.76 - 5.67	348	283-56-0121-24
5	5.43 - 6.3	348	283-56-0138-24
5	5.78 - 6.65	348	283-56-0147-24

HYMAX VERSA



Nominal Pipe Size: 1.5" - 12"

HYMAX VERSA 6" - 12", LENGTH 11"

ND (inch)	Overall Range (inch)	Before Removing the Inner Layer (inch)	After Removing the Inner Layer (inch)	Working Pressure (PSI)	Part Number
6	6.42 - 7.68	6.42 - 7.12	7.01 - 7.68	175	283-56-0163-12
7	7.48 - 8.74	7.48 - 8.11	8.07 - 8.74	175	283-56-0190-12
8	8.54 - 9.84	8.54 - 9.3	9.13 - 9.84	175	283-56-0217-12
10	9.76 - 11.02	9.76 - 10.39	10.35 - 11.02	175	283-56-0248-12
10	10.7 - 12	10.7 - 11.37	11.33 - 12	175	283-56-0272-12
10	10.96 - 12.26	10.96 - 11.63	11.59 - 12.26	175	283-56-0278-12
12	12.58 - 13.84	12.58 - 13.21	13.15 - 13.84	175	283-56-0320-12
12	13.15 - 14.41	13.15 - 13.78	13.74 - 14.41	175	283-56-0334-12



Nominal Pipe Size: 14" - 24"



Nominal Pipe Size 26" - 70" are MTO (Made to Order)

HYMAX VERSA 14" - 24", LENGTH 11"

ND (inch)	Overall Range (inch)	Before Removing the Inner Layer (inch)	After Removing the Inner Layer (inch)	Working Pressure (PSI)	Part Number
14	15.22 - 16.48	15.22 - 15.85	15.84 - 16.48	175	283-56-0387-12
14	15.69 - 16.95	15.69 - 16.32	16.31 - 16.95	175	283-56-0398-12
16	17.11 - 18.37	17.11 - 17.74	17.73 - 18.37	175	283-56-0435-12
16	17.32 - 18.66	17.32 - 17.95	17.90 - 18.66	175	283-56-0440-12
16	18.93 - 20.20	18.93 - 19.56	19.55 - 20.20	175	283-56-0481-12
18	19.42 - 20.68	19.42 - 20.06	20.05 - 20.68	175	283-56-0493-12
18	20.90 - 22.16	20.90 - 21.53	21.52 - 22.16	175	283-56-0531-12
20	22.14 - 23.40	22.14 - 22.77	22.76 - 23.40	175	283-56-0562-12
20	23.60 - 24.86	23.60 - 24.24	24.22 - 24.86	175	283-56-0599-12
24	24.98 - 26.24	24.98 - 25.61	25.60 - 26.24	160	283-56-0634-11
24	25.72 - 26.98	25.72 - 26.37	26.35 - 26.98	160	283-56-0653-11
24	27.08 - 28.36	27.08 - 27.71	27.70 - 28.36	160	283-56-0688-11

HYMAX VERSA



Nominal Pipe Size: 14" - 24"

HYMAX VERSA 14" - 24", HIGH PRESSURE, LENGTH 11"

ND (inch)	Overall Range (inch)	Before Removing the Inner Layer (inch)	After Removing the Inner Layer (inch)	Working Pressure (PSI)	Part Number
14	15.22 - 16.48	15.22 - 15.85	15.84 - 16.48	232	283-56-0387-16S
14	15.69 - 16.95	15.69 - 16.32	16.31 - 16.95	232	283-56-0398-16S
16	17.11 - 18.37	17.11 - 17.74	17.73 - 18.37	232	283-56-0435-16S
16	17.32 - 18.66	17.32 - 17.95	17.90 - 18.66	232	283-56-0440-16S
16	18.93 - 20.20	18.93 - 19.56	19.55 - 20.20	232	283-56-0481-16S
18	19.42 - 20.68	19.42 - 20.06	20.05 - 20.68	232	283-56-0493-16S
18	20.90 - 22.16	20.90 - 21.53	21.52 - 22.16	232	283-56-0531-16S
20	22.14 - 23.40	22.14 - 22.77	22.76 - 23.40	232	283-56-0562-16S
20	23.60 - 24.86	23.60 - 24.24	24.22 - 24.86	232	283-56-0599-16S
24	24.98 - 26.24	24.98 - 25.61	25.60 - 26.24	232	283-56-0634-16S
24	25.72 - 26.98	25.72 - 26.37	26.35 - 26.98	232	283-56-0653-16S
24	27.08 - 28.36	27.08 - 27.71	27.70 - 28.36	232	283-56-0688-16S

HYMAX VERSA NOMINAL SIZES 26" - 70"/LENGTH 11"

Nominal Pipe Size 26" - 70" are MTO (Made to Order)

ND (inch)	Bolt Qty. and Size (mm)	Torque (Ft-Lbs.)	Working Pressure (PSI)
26-28	8-M16	100	100
28-38	8-M16	165	100
38-48	8-M16	200	72
48-54	8-M16	200	58
54-66	8-M16	200	43
66-70	8-M16	200	29

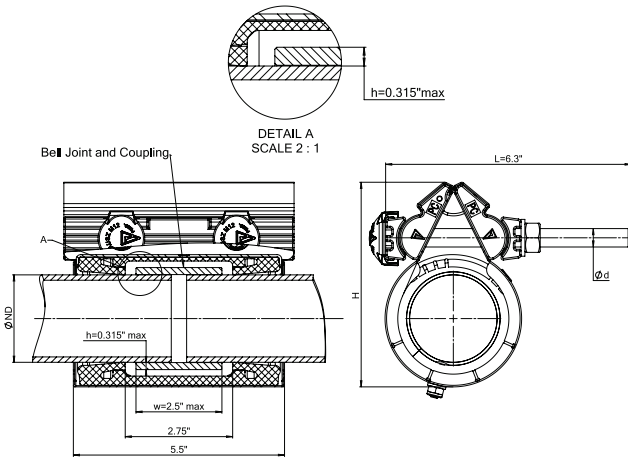
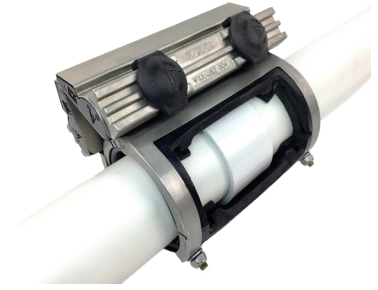
HYMAX VERSA NOMINAL SIZES 26" - 70"/LENGTH 11" HIGH PRESSURE

Nominal Pipe Size 26" - 70" are MTO (Made to Order)

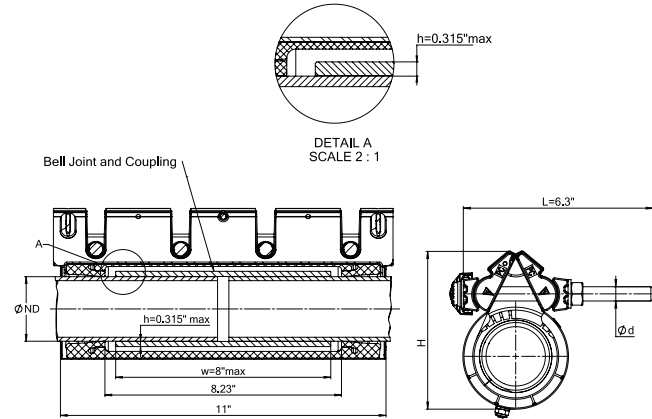
ND (inch)	Bolt Qty. and Size (mm)	Torque (Ft-Lbs.)	Working Pressure (PSI)
26-28	8-M16	115	232
28-30	8-M16	190	203
30-34	8-M16	190	174
34-38	8-M16	190	150
38-42	8-M16	210	150
42-50	8-M16	210	116
50-54	8-M16	210	87
54-66	8-M16	210	72
66-70	8-M16	210	58

HYMAX VERSA ENCAPSULATION

HYMAX Versa Encapsulation (sizes 1.5" - 6") is the only encapsulation repair sleeve of its size to quickly and easily repair joint leaks. It can be wrapped around leaking joints connected to PVC and steel pipes while water pressure is lowered. Lightweight with only two bolts (5.5" length) and four bolts (11" length) to tighten, the HYMAX Versa Encapsulation allows up to 3° of dynamic deflection per side, reducing future pipe cracks and breaks.



HYMAX VERSA ENCAPSULATION
1.5" - 3", Length 5"



HYMAX VERSA ENCAPSULATION
1.5" - 3", Length 11"

HYMAX VERSA ENCAPSULATION 1.5" - 3", Length 5"

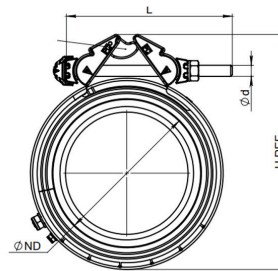
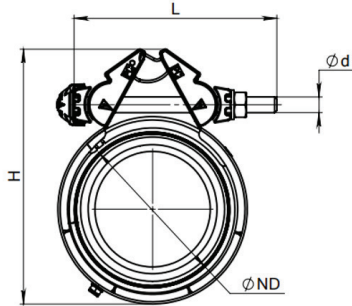
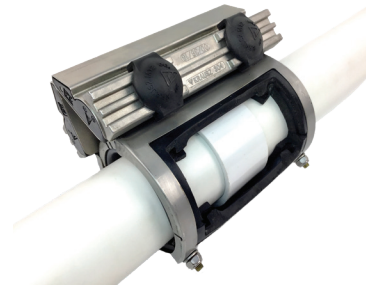
ND (inch)	Overall Range (inch)	H (inch)	Bolts Length L (inch)	Bolts Qty. Size D (mm)	Torque (ft-lbs)	Body (Shell) Thickness (inch)	Approx. Weight (lbs.)	Part Number
1.5	1.77 - 2.24	4.9	6.3	2 -M12	35	0.03	4.2	104-56-0045-16
2	2.05 - 2.52	5.3	6.3	2 -M12	35	0.03	4.3	104-56-0052-16
2	2.32 - 2.79	5.5	6.3	2 -M12	35	0.03	4.5	104-56-0059-16-100*
2.5	2.79 - 3.31	6.1	6.3	2 -M12	35	0.03	4.7	104-56-0071-16
3	3.19 - 3.67	6.5	6.3	2 -M12	35	0.03	4.8	104-56-0081-16

HYMAX VERSA ENCAPSULATION 1.5" - 3", Length 11"

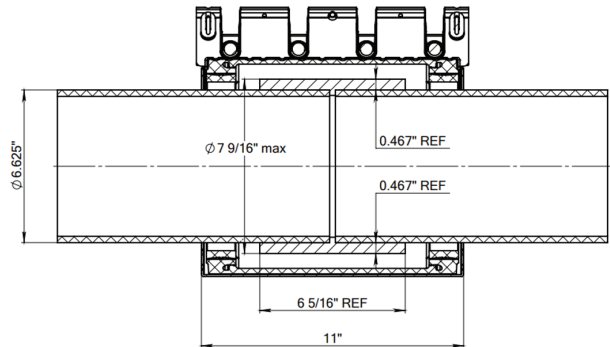
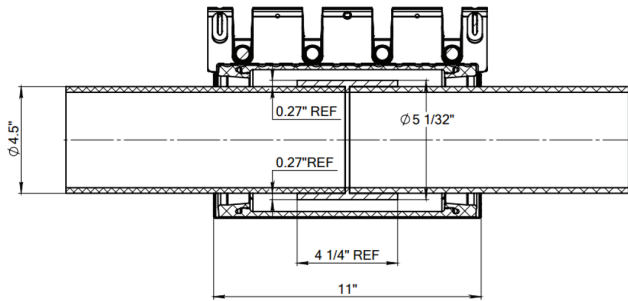
ND (inch)	Overall Range (inch)	H (inch)	Bolts Length L (inch)	Bolts Qty. Size D (mm)	Torque (ft-lbs)	Body (Shell) Thickness (inch)	Approx. Weight (lbs.)	Part Number
1.5	1.77 - 2.24	4.9	6.3	4 -M12	35	0.03	8.6	106-56-0045-16
2	2.05 - 2.52	5.3	6.3	4 -M12	35	0.03	8.8	106-56-0052-16
2	2.32 - 2.79	5.5	6.3	4 -M12	35	0.03	9.3	106-56-0059-16-100*
2.5	2.79 - 3.31	6.1	6.3	4 -M12	35	0.03	9.7	106-56-0071-16
3	3.19 - 3.67	6.5	6.3	4 -M12	35	0.03	9.9	106-56-0081-16

*2" Versa Encapsulation is supplied with an additional gasket for use with IPS HDPE pipe only.

HYMAX VERSA ENCAPSULATION



Encapsulation for pipe PVC OD=6.625" with Joint Sch 40/80



HYMAX VERSA ENCAPSULATION
4", Length 11"

HYMAX VERSA ENCAPSULATION
6", Length 11"

HYMAX VERSA ENCAPSULATION 4", Length 11"

ND (inch)	Overall Range (inch)	H (inch)	Bolts Length	Bolts Qty. Size D (mm)	Torque (ft-lbs)	Body (Shell) Thickness (inch)	Approx. Weight (lbs.)	Part Number
4	4.50	9.0	7.0	4-M14	50	0.05	16.3	106-56-0113-16

HYMAX VERSA ENCAPSULATION 6", Length 11"

ND (inch)	Overall Range (inch)	H (inch)	Bolts Length L (inch)	Bolts Qty. Size D (mm)	Torque (ft-lbs)	Body (Shell) Thickness (inch)	Approx. Weight (lbs.)	Part Number
6	6.63	11.6	7.0	4-M14	90	0.06	24.4	106-56-0163-16

HYMAX® CLAMP

Wide-Range Repair Solution

HYMAX Clamps are designed for permanent repairs of holes and longitudinal cracks in water and wastewater pipes. Highly reliable and easy to install, HYMAX Clamps are both extremely efficient and very cost effective. Made with high quality materials for the gasket, bolts and exterior, the HYMAX Clamp offers high durability under extreme conditions.

ADJUSTING PIN

Precision Casting Type 304
Stainless Steel

GASKET BRIDGE

Type 304 Stainless Steel*

LUGS

Polycarbonate

PRESSURE-ASSISTED GASKET

EPDM compounded for water and
sewage*

COMPRESSION BEAM

Precision Casting Type 304
Stainless Steel (ASTM-A351-CF8)

NUTS & BOLTS

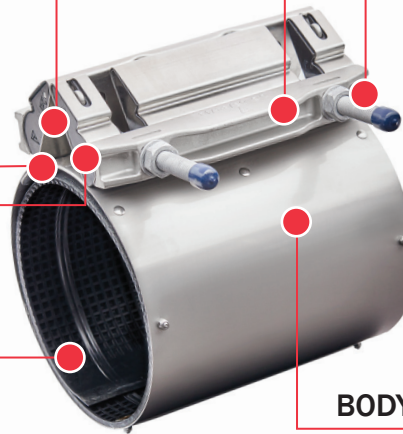
Type 304 Stainless Steel.
Rolled thread and anti-galling
coating

INSULATED BOLTS

used to secure the gasket

BODY

Type 304 Stainless Steel



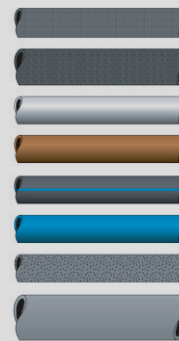
* Picture is based on HYMAX CLAMP 1.5" - 12".
Features may vary between different product sizes.

FEATURES

- Patented Locking Mechanism
- Wide Working Range
- Patented Reinforced Gasket
- Durable Construction

BENEFITS

- Fewer bolts for faster and easier installation, less time in the ditch!
- Accommodate different pipe OD, reduces and simplifies inventory
- EPDM standard gasket prevents creeping and loss of torque
- Weld-free, all Stainless Steel for corrosion resistance



DUCTILE IRON
CAST IRON
STEEL
COPPER
PE
PVC
ASBESTOS CEMENT*
GRP

* CAUTION - ASBESTOS AND OTHER MATERIALS MAY CAUSE CANCER AND DAMAGE TO LUNGS. DO NOT BREATHE DUST, AVOID CREATING DUST. Seek Expert Advice For Breathing Protection And Protective Equipment. Call OSHA 1-800-321-6742 for more information.



HYMAX CLAMP LENGTH 6"



Nominal Pipe Size: 1.5" - 12"

ND (inch)	Overall Range (inch)	Option 1			Option 2			Part Number
		Working Pressure (PSI)	Rated Pressure (PSI)	Torque	Working Pressure (PSI)	Rated Pressure (PSI)	Torque	
1.5	1.86 - 2.16	150	225	30	200	300	40	267-56-0047-10
2	2.35 - 2.65	150	225	30	200	300	40	267-56-0059-10
2.5	2.85 - 3.15	150	225	30	200	300	40	267-56-0072-10
3	3.42 - 4.25	150	225	40	200	300	55	271-56-0087-10W
4	4.47 - 5.27	150	225	50	200	300	65	271-56-0113-10W
	4.80 - 5.60	150	225	50	200	300	65	271-56-0122-10W
6	5.50 - 6.30	150	225	60	200	300	80	271-56-0139-10W
	6.60 - 7.40	150	225	60	200	300	80	271-56-0167-10W
	6.84 - 7.64	150	225	60	200	300	80	271-56-0174-10W
8	7.80 - 8.60	150	225	70	200	300	90	271-56-0198-10W
	8.60 - 9.40	150	225	70	200	300	90	271-56-0218-10W
	9.00 - 9.80	150	225	70	200	300	90	271-56-0228-10W
10	10.73 - 11.53	150	225	100	200	300	130	271-56-0272-10W
	11.35 - 12.15	150	225	100	200	300	130	271-56-0288-10W
12	12.75 - 13.55	150	225	100	200	300	130	271-56-0323-10W
	13.60 - 14.40	150	225	100	200	300	130	271-56-0345-10W

HYMAX CLAMP LENGTH 9"



Nominal Pipe Size: 1.5" - 12"

ND (inch)	Overall Range (inch)	Option 1			Option 2			Part Number
		Working Pressure (PSI)	Rated Pressure (PSI)	Torque	Working Pressure (PSI)	Rated Pressure (PSI)	Torque	
1.5	1.86 - 2.16	150	225	45	200	300	60	268-56-0047-10
2	2.35 - 2.65	150	225	45	200	300	60	268-56-0059-10
2.5	2.85 - 3.15	150	225	45	200	300	60	268-56-0072-10
3	3.42 - 4.25	150	225	70	200	300	90	272-56-0087-10W
4	4.47 - 5.27	150	225	75	200	300	100	272-56-0113-10W
	4.80 - 5.60	150	225	75	200	300	100	272-56-0122-10W
6	5.50 - 6.30	150	225	80	200	300	105	272-56-0139-10W
	6.60 - 7.40	150	225	80	200	300	105	272-56-0167-10W
	6.84 - 7.64	150	225	80	200	300	105	272-56-0174-10W
8	7.80 - 8.60	150	225	95	200	300	125	272-56-0198-10W
	8.60 - 9.40	150	225	95	200	300	125	272-56-0218-10W
	9.00 - 9.80	150	225	95	200	300	125	272-56-0228-10W
10	10.73 - 11.53	150	225	135	200	300	175	272-56-0272-10W
	11.35 - 12.15	150	225	135	200	300	175	272-56-0288-10W
12	12.75 - 13.55	150	225	150	200	300	195	272-56-0323-10W
	13.60 - 14.40	150	225	150	200	300	195	272-56-0345-10W

HYMAX CLAMP LENGTH 12"



Nominal Pipe Size: 1.5" - 12"

ND (inch)	Overall Range (inch)	Option 1			Option 2			Part Number
		Working Pressure (PSI)	Rated Pressure (PSI)	Torque	Working Pressure (PSI)	Rated Pressure (PSI)	Torque	
1.5	1.86 - 2.16	150	225	45	200	300	60	269-56-0047-10
2	2.35 - 2.65	150	225	45	200	300	60	269-56-0059-10
2.5	2.85 - 3.15	150	225	45	200	300	60	269-56-0072-10
3	3.42 - 4.25	150	225	70	200	300	90	273-56-0087-10W
4	4.47 - 5.27	150	225	75	200	300	100	273-56-0113-10W
	4.80 - 5.60	150	225	75	200	300	100	273-56-0122-10W
6	5.50 - 6.30	150	225	80	200	300	105	273-56-0139-10W
	6.60 - 7.40	150	225	80	200	300	105	273-56-0167-10W
	6.84 - 7.64	150	225	80	200	300	105	273-56-0174-10W
8	7.80 - 8.60	150	225	95	200	300	125	273-56-0198-10W
	8.60 - 9.40	150	225	95	200	300	125	273-56-0218-10W
	9.00 - 9.80	150	225	95	200	300	125	273-56-0228-10W
10	10.73 - 11.53	150	225	135	200	300	175	273-56-0272-10W
	11.35 - 12.15	150	225	135	200	300	175	273-56-0288-10W
12	12.75 - 13.55	150	225	150	200	300	195	273-56-0323-10W
	13.60 - 14.40	150	225	150	200	300	195	273-56-0345-10W

HYMAX CLAMP LENGTH 12"



Nominal Pipe Size: 12" - 26"

ND (inch)	Overall Range (inch)	Working Pressure (PSI)	Rated Pressure (PSI)	Part Number
12/14	13.64 - 15.24	150	225	223-56-0346-10
14	14.20 - 15.80	150	225	223-56-0361-10
	15.68 - 17.28	150	225	223-56-0398-10
16	16.33 - 17.93	150	225	223-56-0415-10
16/18	17.72 - 19.32	150	225	223-56-0450-10
	18.48 - 20.08	150	225	223-56-0469-10
18	19.88 - 21.48	150	225	223-56-0505-10
18/20	20.50 - 22.10	150	225	223-56-0521-10
	20.87 - 22.47	150	225	223-56-0530-10
20	22.00 - 23.60	150	225	223-56-0559-10
	22.65 - 24.25	150	225	223-56-0575-10
20/24	23.30 - 24.90	150	225	223-56-0592-10
	24.00 - 25.60	150	225	223-56-0610-10
24	24.68 - 26.28	150	225	223-56-0627-10
	25.54 - 27.14	150	225	223-56-0649-10
24/26	26.10 - 27.70	150	225	223-56-0663-10
	26.93 - 28.53	150	225	223-56-0684-10
	27.80 - 29.40	150	225	223-56-0706-10

HYMAX CLAMP LENGTH 15"



Nominal Pipe Size: 4" - 12"

ND (inch)	Overall Range (inch)	Option 1			Option 2			Part Number
		Working Pressure (PSI)	Rated Pressure (PSI)	Torque	Working Pressure (PSI)	Rated Pressure (PSI)	Torque	
4	4.47 - 5.27	150	225	75	200	300	100	274-56-0113-10W
	4.80 - 5.60	150	225	75	200	300	100	274-56-0122-10W
6	5.50 - 6.30	150	225	80	200	300	105	274-56-0139-10W
	6.60 - 7.40	150	225	80	200	300	105	274-56-0167-10W
	6.84 - 7.64	150	225	80	200	300	105	274-56-0174-10W
8	7.80 - 8.60	150	225	95	200	300	125	274-56-0198-10W
	8.60 - 9.40	150	225	95	200	300	125	274-56-0218-10W
	9.00 - 9.80	150	225	95	200	300	125	274-56-0228-10W
10	10.73 - 11.53	150	225	135	200	300	175	274-56-0272-10W
	11.35 - 12.15	150	225	135	200	300	175	274-56-0288-10W
12	12.75 - 13.55	150	225	150	200	300	195	274-56-0323-10W
	13.60 - 14.40	150	225	150	200	300	195	274-56-0345-10W

HYMAX CLAMP LENGTH 15"



Nominal Pipe Size: 12" - 26"

ND (inch)	Overall Range (inch)	Working Pressure (PSI)	Rated Pressure (PSI)	Part Number
12/14	13.64 - 15.24	150	225	224-56-0346-10
14	14.20 - 15.80	150	225	224-56-0361-10
	15.68 - 17.28	150	225	224-56-0398-10
16	16.33 - 17.93	150	225	224-56-0415-10
16/18	17.72 - 19.32	150	225	224-56-0450-10
	18.48 - 20.08	150	225	224-56-0469-10
18	19.88 - 21.48	150	225	224-56-0505-10
18/20	20.50 - 22.10	150	225	224-56-0521-10
	20.87 - 22.47	150	225	224-56-0530-10
20	22.00 - 23.60	150	225	224-56-0559-10
	22.65 - 24.25	150	225	224-56-0575-10
20/24	23.30 - 24.90	150	225	224-56-0592-10
	24.00 - 25.60	150	225	224-56-0610-10
24	24.68 - 26.28	150	225	224-56-0627-10
	25.54 - 27.14	150	225	224-56-0649-10
24/26	26.10 - 27.70	150	225	224-56-0663-10
	26.93 - 28.53	150	225	224-56-0684-10
	27.80 - 29.40	150	225	224-56-0706-10

HYMAX CLAMP LENGTH 24"



Nominal Pipe Size: 4" - 12"

Image is not representative of actual product

ND (inch)	Overall Range (inch)	Option 1			Option 2			Part Number
		Working Pressure (PSI)	Rated Pressure (PSI)	Torque	Working Pressure (PSI)	Rated Pressure (PSI)	Torque	
4	4.47 - 5.27	150	225	75	200	300	100	277-56-0113-10W
	4.80 - 5.60	150	225	75	200	300	100	277-56-0122-10W
6	5.50 - 6.30	150	225	80	200	300	105	277-56-0139-10W
	6.60 - 7.40	150	225	80	200	300	105	277-56-0167-10W
	6.84 - 7.64	150	225	80	200	300	105	277-56-0174-10W
8	7.80 - 8.60	150	225	95	200	300	125	277-56-0198-10W
	8.60 - 9.40	150	225	95	200	300	125	277-56-0218-10W
	9.00 - 9.80	150	225	95	200	300	125	277-56-0228-10W
10	10.73 - 11.53	150	225	135	200	300	175	277-56-0272-10W
	11.35 - 12.15	150	225	135	200	300	175	277-56-0288-10W
12	12.75 - 13.55	150	225	150	200	300	195	277-56-0323-10W
	13.60 - 14.40	150	225	150	200	300	195	277-56-0345-10W

HYMAX CLAMP LENGTH 24"



Nominal Pipe Size: 12" - 26"

Image is not representative of actual product

ND (inch)	Overall Range (inch)	Working Pressure (PSI)	Rated Pressure (PSI)	Part Number
12/14	13.64 - 15.24	150	225	227-56-0346-10
14	14.20 - 15.80	150	225	227-56-0361-10
	15.68 - 17.28	150	225	227-56-0398-10
16	16.33 - 17.93	150	225	227-56-0415-10
16/18	17.72 - 19.32	150	225	227-56-0450-10
	18.48 - 20.08	150	225	227-56-0469-10
18	19.88 - 21.48	150	225	227-56-0505-10
18/20	20.50 - 22.10	150	225	227-56-0521-10
	20.87 - 22.47	150	225	227-56-0530-10
20	22.00 - 23.60	150	225	227-56-0559-10
	22.65 - 24.25	150	225	227-56-0575-10
20/24	23.30 - 24.90	150	225	227-56-0592-10
	24.00 - 25.60	150	225	227-56-0610-10
24	24.68 - 26.28	150	225	227-56-0627-10
	25.54 - 27.14	150	225	227-56-0649-10
24/26	26.10 - 27.70	150	225	227-56-0663-10
	26.93 - 28.53	150	225	227-56-0684-10
	27.80 - 29.40	150	225	227-56-0706-10

520/530 SERIES CLAMP

All Stainless Steel Repair Solution

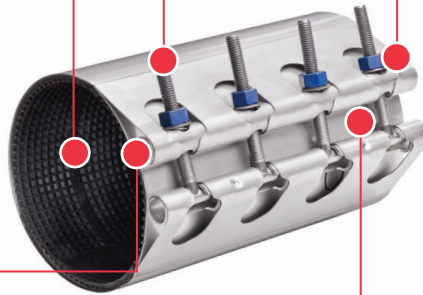
Lightweight, All Stainless Steel Clamps resist corrosive atmospheres and hot soils. Available in single-section Full-Seal® style (Series 520), in two-section Xtra-Range® style (Series 530), and in Servi-Seal® style with welded-in service outlet. Servi-Seal style is available in either single-section (Styles 521-529) or two-section (Styles 531- 539).

HIGH STRENGTH STAINLESS STEEL REMOVABLE BOLTS

304L STAINLESS STEEL BAND

360 TAPERED-END GRIDDED GASKET

UNIQUE LOW-PROFILE LUG DESIGN



MOLDED IN STAINLESS STEEL GAP BRIDGE

FEATURES

- Nitrile Waffle Gasket
- All Stainless Steel Construction
- Tapered Gasket With Stainless Steel Bridge Plate
- Removable Bolts

BENEFITS

- Works with Water and Natural Gas
- Resists corrosion in aggressive soil
- 360 - degree seal on entire OD range of clamp
- Bolts are replaceable if galled during installation



DUCTILE IRON

CAST IRON

STEEL

PVC

ASBESTOS CEMENT*

* CAUTION - ASBESTOS AND OTHER MATERIALS MAY CAUSE CANCER AND DAMAGE TO LUNGS. DO NOT BREATHE DUST, AVOID CREATING DUST. Seek Expert Advice For Breathing Protection And Protective Equipment. Call OSHA 1-800-321-6742 for more information.



JOIN



REPAIR



RESTRAIN



TAP

520 SERIES SINGLE SECTION FULL-SEAL® STAINLESS STEEL CLAMPS



HYMAX 520 Series Single Section Full-Seal Stainless Steel Pipe Repair Clamps - for 2" through 12" cast iron and steel pipe.

To specify the catalog number, provide the following information:

1. Style number – 520
2. Length – standard lengths can be found on the OD chart on the following page
3. Size number – refer to the OD chart on the following page after verifying pipe OD
4. Catalog number prefix or suffix for optional features, if desired.

The catalog number for a 520 Single Section Full-Seal Repair Clamp, 12" long for 8" cast iron pipe is 520-12-0899.

Optional Extended Starting Bolts and Extra bolts and Nuts for HYMAX Single Section Full Seal Stainless Repair Clamps

Clamps can be ordered with a longer bolt and longer nut in one bolt position to facilitate clamp installation. To specify optional extended bolt/nut, add a suffix "X" to end of catalog number.

Example: 530-12-0684X

Clamp Size	Bolt Size	Bolt Part No.	Nut Part No.	Washer Part No.
2"-12" (Standard Bolt & Nut)	1/2" x 4-1/2"	522997	522998	522999

Deep Socket Wrenches

Specially designed for use with HYMAX Full-Seal Repair Clamps. Long ratchet handle has thumb-tip reverse. Deep sockets (3-1/4") have double hex (12 pt.) and 1/2" square drive.

Part Number	Description
515204	15-3/4" reversible Ratchet Handle
520344	7/8" Socket for 2" and 3" clamps

Bonding Device for Cathodic Protection

Metallic conductors are set in the gasket to provide contact between the band and the pipe surface and are available on all 500 series clamps. These conductors permit electrical current flow by establishing positive contact with pipe and band on each side of the pipe crack or break.

To specify optional bonding device for cathodic protection, add a prefix of "2-" to catalog number.

Example: 2-520-12-0899.

Add-on Feature Allows Long Lengthwise Repairs

The gasket is cemented into the band in an offset position. This allows overlapping the gasket with the band of another clamp when repairing a longer than usual area of pipe. This feature is not available on Servi-Seal style clamps.

To specify optional add-on feature for longer than usual repairs, add a prefix of "1-" to catalog number.

Example: 1-520-12-0899.

IMPORTANT: HYMAX PIPE REPAIR CLAMPS have demonstrated their capability to seal against gas pressures commonly encountered in distribution systems. Smaller diameter clamps of a given design can seal against higher pressures than larger ones. In addition, the pressure that a clamp can contain is effected by the torque applied to the bolts, the uniformity of the bolt tightening (where there is more than one bolt) as well as the type of extent of pipe damage, surface condition of the pipe, environmental conditions and installation workmanship.

Metallic components of repair clamps, including stainless steel, corrode at widely variable rates depending upon many factors, such as installation outdoors or underground, composition of surrounding atmosphere/soil, presence of stray currents, moisture or chemicals, etc. Consequently, repair clamps must be assumed to have a finite service life. Consult with a corrosion professional to determine the life expectancy of this repair clamp taking into consideration all appropriate factors in the application. The piping system designer should determine the suitability of this type product on your particular system. Unforeseen failure of this product could result if these precautions are not taken. HYMAX can provide additional material specification information on request by contacting Customer Service: 800-798-3131.

520 SERIES SINGLE SECTION FULL-SEAL® STAINLESS STEEL CLAMPS



HYMAX 520 Series Single Section Full-Seal® Stainless Steel Pipe Repair Clamps – for 2" through 12" cast iron and steel pipe. Standard Lengths: 6", 7-1/2", 9", 10", 12", 15", 18", 20"

Nominal Pipe Size	Clamp Size Number	Clamp O.D. Range*				Cast Iron	Steel
		Inches		Millimeters			
		Min.	Max.	Min.	Max.		
2"†	0235	2.35	2.63	59.7	66.8	50-250,A,B,C,D	2"
2-1/2"†	0243	2.43	2.58	61.7	65.5		
2-1/2"†	0270	2.70	2.98	68.6	75.7	50-250,A,B,C,D	2-1/2"
3"†	0297	2.97	3.25	75.5	82.5	-	3" O.D.
3"†	0346	3.46	3.72	87.9	94.4	-	3"
3"†	0373	3.73	4.00	94.8	101.6	50-250,A,B,C,D	-
3-1/2"†	0396	3.96	4.25	100.6	107.9	-	3-1/2" (4" O.D.)
4"	0445	4.45	4.87	113.1	123.6	50-250,A	STD
4"	0474	4.74	5.14	120.4	130.5	50-250,A,B,C,D	-
4"	0495	4.95	5.35	125.8	135.8	-	-
4"	0520	5.20	5.60	132.1	142.2	-	-
6"	0594	5.94	6.34	150.9	161.0	-	6" O.D.
6"	0655	6.55	6.97	164.4	177.0	50-250,A	STD
6"	0684	6.84	7.24	173.8	183.8	50-250,A,B,C,D	-
6"	0704	7.04	7.44	178.9	188.9	-	-
6"	0722	7.22	7.62	183.4	193.5	-	-
8"	0853	8.53	8.93	216.7	226.8	-	STD
8"	0899	8.99	9.39	228.4	238.5	50-250,A,B,C,D	-
8"	0925	9.25	9.65	235.0	245.1	-	-
8"	0940	9.40	9.80	238.8	248.9	-	-
10"	0990	9.90	10.30	251.4	261.6	-	10" O.D.
10"	1064	10.64	11.04	270.3	280.4	-	STD
10"	1104	11.04	11.46	280.5	291.0	50-250,A,B,C,D	-
10"	1137	11.37	11.77	288.8	298.9	-	-
10"	1175	11.75	12.15	298.5	308.6	-	12" O.D.
12"	1260	12.60	13.00	320.1	330.2	-	STD
12"	1314	13.14	13.56	333.8	344.4	50-250,A,B,C,D	-
12"	1356	13.56	13.96	344.5	354.5	-	-
12"	1400	14.00	14.40	355.7	365.7	-	14"

*Verify pipe O.D. before selecting clamp size.

†2"-3-1/2" Standard length is 6", 7-1/2", 9", 10", 12", 15", 18"

520 SERIES SINGLE SECTION SERVI-SEAL® STAINLESS STEEL CLAMPS



HYMAX 521 - 529 Single Section Servi-Seal Stainless Steel Pipe Repair Clamps - with integral 3/4" through 2" IP threaded service outlet-for 2" through 12" cast iron and steel pipe.

To specify the catalog number, provide the following information:

1. Style number – see chart below
2. Length – standard lengths can be found on the OD chart on the following page
3. Size number – refer to the OD chart on the following page after verifying pipe OD
4. Catalog number prefix for optional features desired

The catalog number for a Single Section Servi-Seal Repair Clamp with 3/4" IP outlet, 12" clamp length for 8" cast iron pipe is 521-12-0899.

Clamp Style Number

Style Number	Size and Type of Outlet Tapping Thread	O.D. Ranges Available*
521	3/4" IP	4.70 – 13.96
522	3/4" CC	4.70 – 13.96
523	1" IP	4.70 – 13.96
524	1" CC	4.70 – 13.96
525	1 1/4" IP	4.70 – 13.96
526	1 1/2" CC	4.70 – 13.96
527	1 1/2" IP	4.70 – 13.96
528	2" CC	4.70 – 13.96
529	2" IP	4.70 – 13.96

*Clamps available to fit specific size pipe within this nominal size range.

Extra Bolts, Nuts and Washers for HYMAX Single Section Servi-Seal Stainless Steel Repair Clamps

Clamp Size	Bolt Size	Bolt Part No.	Nut Part No.	Washer Part No.
2"-12" (Standard Bolt & Nut)	1/2" x 4-1/2"	522997	522998	522999

Deep Socket Wrenches

Specially designed for use with HYMAX Full-Seal Repair Clamps. Long ratchet handle has thumb-tip reverse. Deep sockets (3-1/4") have double hex (12 pt.) and 1/2" square drive.

Part Number	Description
515204	15-3/4" with 1/2" reversible Ratchet Handle
520344	7/8" Socket for 2" and 3" clamps

Bonding Device for Cathodic Protection

Metallic conductors are set in the gasket to provide contact between the band and the pipe surface and are available on all 500 series clamps. These conductors permit electrical current flow by establishing positive contact with pipe and band on each side of the pipe crack or break.

To specify optional bonding device for cathodic protection, add a prefix of "2-" to catalog number.

Example: 2-521-12-0899

IMPORTANT: HYMAX PIPE REPAIR CLAMPS have demonstrated their capability to seal against gas pressures commonly encountered in distribution systems. Smaller diameter clamps of a given design can seal against higher pressures than larger ones. In addition, the pressure that a clamp can contain is effected by the torque applied to the bolts, the uniformity of the bolt tightening (where there is more than one bolt) as well as the type of extent of pipe damage, surface condition of the pipe, environmental conditions and installation workmanship.

Metallic components of repair clamps, including stainless steel, corrode at widely variable rates depending upon many factors, such as installation outdoors or underground, composition of surrounding atmosphere/soil, presence of stray currents, moisture or chemicals, etc. Consequently, repair clamps must be assumed to have a finite service life. Consult with a corrosion professional to determine the life expectancy of this repair clamp taking into consideration all appropriate factors in the application. The piping system designer should determine the suitability of this type product on your particular system. Unforeseen failure of this product could result if these precautions are not taken. HYMAX can provide additional material specification information on request by contacting Customer Service: 800-798-3131.

520 SERIES SINGLE SECTION SERVI-SEAL® STAINLESS STEEL CLAMPS



HYMAX 521-529 Single Section Stainless Full-Seal® Pipe Repair Clamps – for 2" through 12" cast iron and steel pipe. Standard Lengths: 6", 7-1/2", 9", 10", 12", 15", 18", 20"

Nominal Pipe Size	Clamp Size Number	Clamp O.D. Range*				Cast Iron	Steel
		Inches		Millimeters			
		Min.	Max.	Min.	Max.		
2"†	0235	2.35	2.63	59.7	66.8	50-250,A,B,C,D	2"
2-1/2"†	0243	2.43	2.58	61.7	65.5		
2-1/2"†	0270	2.70	2.98	68.6	75.7	50-250,A,B,C,D	2-1/2"
3"†	0297	2.97	3.25	75.5	82.5	-	3" O.D.
3"†	0346	3.46	3.72	87.9	94.4	-	3"
3"†	0373	3.73	4.00	94.8	101.6	50-250,A,B,C,D	-
3-1/2"†	0396	3.96	4.25	100.6	107.9	-	3-1/2" (4" O.D.)
4"	0445	4.45	4.87	113.1	123.6	50-250,A	STD
4"	0474	4.74	5.14	120.4	130.5	50-250,A,B,C,D	-
4"	0495	4.95	5.35	125.8	135.8	-	-
4"	0520	5.20	5.60	132.1	142.2	-	-
6"	0594	5.94	6.34	150.9	161.0	-	6" O.D.
6"	0655	6.55	6.97	164.4	177.0	50-250,A	STD
6"	0684	6.84	7.24	173.8	183.8	50-250,A,B,C,D	-
6"	0704	7.04	7.44	178.9	188.9	-	-
6"	0722	7.22	7.62	183.4	193.5	-	-
8"	0853	8.53	8.93	216.7	226.8	-	STD
8"	0899	8.99	9.39	228.4	238.5	50-250,A,B,C,D	-
8"	0925	9.25	9.65	235.0	245.1	-	-
8"	0940	9.40	9.80	238.8	248.9	-	-
10"	0990	9.90	10.30	251.4	261.6	-	10" O.D.
10"	1064	10.64	11.04	270.3	280.4	-	STD
10"	1104	11.04	11.46	280.5	291.0	50-250,A,B,C,D	-
10"	1137	11.37	11.77	288.8	298.9	-	-
10"	1175	11.75	12.15	298.5	308.6	-	12" O.D.
12"	1260	12.60	13.00	320.1	330.2	-	STD
12"	1314	13.14	13.56	333.8	344.4	50-250,A,B,C,D	-
12"	1356	13.56	13.96	344.5	354.5	-	-
12"	1400	14.00	14.40	355.7	365.7	-	14"

*Verify pipe O.D. before selecting clamp size.

†2"-3-1/2" Standard length is 6", 7-1/2", 9", 10", 12", 15", 18"

530 SERIES XTRA-RANGE® FULL-SEAL® STAINLESS STEEL CLAMPS



HYMAX 530 Series Xtra-Range Full-Seal Stainless Steel Pipe Repair Clamps - for 4" through 12" cast iron, ductile iron and steel pipe.

To specify the catalog number, provide the following information:

1. Style number - 530
2. Length - standard lengths can be found on the OD chart on the following page
3. Size number - refer to the OD chart on the following page after verifying pipe OD
4. Catalog number prefix or suffix for optional features, if desired.

The catalog number for a 530 Xtra-Range Full-Seal Repair Clamp, 12" long for 6" cast iron pipe is 530-12-0684.

Optional Extended Starting Bolts and Extra Bolts and Nuts for HYMAX Xtra-Range Full Seal Stainless Repair Clamps

Clamps can be ordered with a longer bolt and longer nut in one bolt position to facilitate clamp installation.

To specify optional extended bolt/nut, add a suffix "X" to end of catalog number.

Example: 530-12-0684X

Clamp Size	Bolt Size	Bolt Part No.	Nut Part No.	Washer Part No.
2"-12" (Standard Bolt & Nut)	1/2" x 4-1/2"	522997	522998	522999

Deep Socket Wrenches

Specially designed for use with HYMAX Full-Seal Repair Clamps. Long ratchet handle has thumb-tip reverse. Deep sockets (3-1/4") have double hex (12 pt.) and 1/2" square drive.

Part Number	Description
515204	15-3/4" with 1/2" reversible Ratchet Handle
520344	7/8" Socket for 4" and larger clamps

Bonding Device for Cathodic Protection

Metallic conductors are set in the gasket to provide contact between the band and the pipe surface and are available on all 500 series clamps. These conductors permit electrical current flow by establishing positive contact with pipe and band on each side of the pipe crack or break.

To specify optional bonding device for cathodic protection, add a prefix of "2-" to catalog number.

Example: 2-530-12-0684

Add-on Feature Allows Long Lengthwise Repairs

The gasket is cemented into the band in a 1" offset position. This allows overlapping the gasket with the band of another offset clamp when repairing a longer than usual area of pipe. This feature is not available on Servi-Seal style clamps.

To specify optional add-on feature for longer than usual repairs, add a prefix of "1-" to catalog number.

Example: 1-530-12-0684.

IMPORTANT: HYMAX PIPE REPAIR CLAMPS have demonstrated their capability to seal against gas pressures commonly encountered in distribution systems. Smaller diameter clamps of a given design can seal against higher pressures than larger ones. In addition, the pressure that a clamp can contain is effected by the torque applied to the bolts, the uniformity of the bolt tightening (where there is more than one bolt) as well as the type of extent of pipe damage, surface condition of the pipe, environmental conditions and installation workmanship.

Metallic components of repair clamps, including stainless steel, corrode at widely variable rates depending upon many factors, such as installation outdoors or underground, composition of surrounding atmosphere/soil, presence of stray currents, moisture or chemicals, etc. Consequently, repair clamps must be assumed to have a finite service life. Consult with a corrosion professional to determine the life expectancy of this repair clamp taking into consideration all appropriate factors in the application. The piping system designer should determine the suitability of this type product on your particular system. Unforeseen failure of this product could result if these precautions are not taken. HYMAX can provide additional material specification information on request by contacting Customer Service: 800-798-3131.

530 SERIES XTRA-RANGE® FULL-SEAL® STAINLESS STEEL CLAMPS



HYMAX 530 Series Xtra-Range® Full-Seal® Stainless Steel
Pipe Repair Clamps – for 4" through 12" cast iron and steel pipe.
Standard Lengths: 6", 7-1/2", 9", 10", 12', 15", 18", 20"

Nominal Pipe Size	Clamp Size Number	Clamp O.D. Range*				Cast Iron	Steel
		Inches		Millimeters			
		Min.	Max.	Min.	Max.		
4"	0474	4.74	5.54	120.4	140.7	50-250,A,B,C,D	-
6"	0594	5.94	6.74	150.9	171.2	-	6" O.D.
6"	0684	6.84	7.64	173.8	194.1	50-250,A,B,C,D	-
8"	0899	8.99	9.79	228.4	248.7	50-250,A,B,C,D	-
10"	1070	10.70	11.50	271.7	292.1	50-250,A,B,C,D	-
10"	1104	11.04	11.84	280.4	300.7		
10"	1160	11.60	12.40	294.6	315.0	-	STD
12"	1314	13.14	13.94	333.8	354.1	50-250,A,B,C,D	-
12"	1365	13.65	14.45	346.7	367.0	-	-

*Verify pipe O.D. before selecting clamp size.

530 SERIES XTRA-RANGE® SERVI-SEAL® STAINLESS STEEL CLAMPS



HYMAX 531 - 539 Xtra-Range® Servi-Seal® Stainless Steel Pipe Repair Clamps - with integral 3/4" through 2" IP threaded service outlet - for 4" through 12" cast iron and steel pipe.

To specify the catalog number, provide the following information:

1. Style number – see chart below
2. Length – standard lengths can be found on the OD chart on the following page
3. Size number – refer to the OD chart on the following page after verifying pipe OD
4. Catalog number prefix for optional features, if desired

The catalog number for a Xtra-Range Servi-Seal Repair Clamp, with a 3/4" IP outlet, 12" clamp length for 6" cast iron pipe is 531-12-0684.

Clamp Style Number

Style Number	Size and Type of Outlet Tapping Thread	O.D. Ranges Available*
531	3/4" IP	4.70 – 13.96
532	3/4" CC	4.70 – 13.96
533	1" IP	4.70 – 13.96
534	1" CC	4.70 – 13.96
535	1 1/4" IP	4.70 – 13.96
536	1 1/2" CC	4.70 – 13.96
537	1 1/2" IP	4.70 – 13.96
538	2" CC	4.70 – 13.96
539	2" IP	4.70 – 13.96

*Clamps available to fit specific size pipe within this nominal size range.

Optional Extended Starting Bolts and Extra Bolts and Nuts for HYMAX Xtra-Range® Full Seal® Stainless Repair Clamps

Clamps can be ordered with a longer bolt and longer nut in one bolt position to facilitate clamp installation.

To specify optional extended bolt/nut, add a suffix "X" to end of catalog number.

Example: 531-12-0684X

Clamp Size	Bolt Size	Bolt Part No.	Nut Part No.	Washer Part No.
2"-12" (Standard Bolt & Nut)	1/2" x 4-1/2"	522997	522998	522999

Deep Socket Wrenches

Specially designed for use with HYMAX Full-Seal Repair Clamps. Long ratchet handle has thumb-tip reverse. Deep sockets (3-1/4") have double hex (12 pt.) and 1/2" square drive.

Part Number	Description
515204	15-3/4" with 1/2" reversible Ratchet Handle

Bonding Device For Cathodic Protection

Metallic conductors are set in the gasket to provide contact between the band and the pipe surface and are available on all 500 series clamps. These conductors permit electrical current flow by establishing positive contact with pipe and band on each side of the pipe crack or break.

To specify optional bonding device for cathodic protection, add a prefix of "2-" to catalog number.

Example: 2-531-12-0684

IMPORTANT: HYMAX PIPE REPAIR CLAMPS have demonstrated their capability to seal against gas pressures commonly encountered in distribution systems. Smaller diameter clamps of a given design can seal against higher pressures than larger ones. In addition, the pressure that a clamp can contain is effected by the torque applied to the bolts, the uniformity of the bolt tightening (where there is more than one bolt) as well as the type of extent of pipe damage, surface condition of the pipe, environmental conditions and installation workmanship.

METALLIC COMPONENTS OF REPAIR CLAMPS, INCLUDING STAINLESS STEEL, CORRODE AT WIDELY VARIABLE RATES DEPENDING UPON MANY FACTORS, SUCH AS INSTALLATION OUTDOORS OR UNDERGROUND, COMPOSITION OF SURROUNDING ATMOSPHERE/SOIL, PRESENCE OF STRAY CURRENTS, MOISTURE OR CHEMICALS, ETC. CONSEQUENTLY, REPAIR CLAMPS MUST BE ASSUMED TO HAVE A FINITE SERVICE LIFE. CONSULT WITH A CORROSION PROFESSIONAL TO DETERMINE THE LIFE EXPECTANCY OF THIS REPAIR CLAMP TAKING INTO CONSIDERATION ALL APPROPRIATE FACTORS IN THE APPLICATION. THE PIPING SYSTEM DESIGNER SHOULD DETERMINE THE SUITABILITY OF THIS TYPE PRODUCT ON YOUR PARTICULAR SYSTEM. UNFORESEEN FAILURE OF THIS PRODUCT COULD RESULT IF THESE PRECAUTIONS ARE NOT TAKEN. HYMAX CAN PROVIDE ADDITIONAL MATERIAL SPECIFICATION INFORMATION ON REQUEST BY CONTACTING CUSTOMER SERVICE: 800-798-3131.

530 SERIES XTRA-RANGE® SERVI-SEAL® STAINLESS STEEL CLAMPS



HYMAX 531-539 Xtra-Range® Servi-Seal® Stainless Steel
Pipe Repair Clamps – for 4" through 12" cast iron and steel pipe.
Standard Lengths: 6", 7-1/2", 9", 10", 12", 15", 18", 20"

Nominal Pipe Size	Clamp Size Number	Clamp O.D. Range*				Cast Iron	Steel
		Inches		Millimeters			
		Min.	Max.	Min.	Max.		
4"	0405	4.05	4.85	102.9	123.2		
4"	0474	4.74	5.54	120.4	140.7	50-250,A,B,C,D	-
6"	0594	5.94	6.74	150.9	171.2	-	6" O.D.
6"	0684	6.84	7.64	173.8	194.1	50-250,A,B,C,D	-
8"	0899	8.99	9.79	228.4	248.7	50-250,A,B,C,D	-
10"	1070	10.70	11.50	271.8	292.1	50-250,A,B,C,D	-
10"	1104	11.04	11.84	280.4	300.7		
10"	1160	11.60	12.40	294.6	314.9	-	STD
12"	1314	13.14	13.94	333.8	354.1	50-250,A,B,C,D	-
12"	1365	13.65	14.45	346.7	367.0	-	-

*Verify pipe O.D. before selecting clamp size.

540/550 SERIES CLAMP

All Stainless Steel Repair Solution

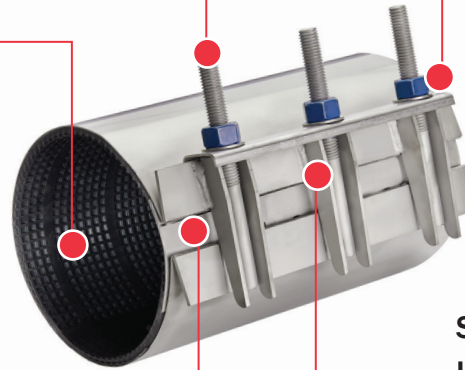
Lightweight, finger-lug design, HYMAX All Stainless Steel Clamps resist corrosive atmospheres and hot soils. Available in single-section Full Seal® style (540 Series), two-section Xtra Range® style (550 Series) and Servi-Seal® style with welded-in service outlet in both single and double section. Each clamp size can accommodate a wide range of O.D. variations.

HIGH STRENGTH

STAINLESS STEEL STUDS

360 TAPERED-END GRIDDED GASKET

MOLDED IN STAINLESS STEEL GAP BRIDGE



304L STAINLESS STEEL BAND

STAINLESS STEEL LIFTER BAR LUG DESIGN

FEATURES

- Nitrile Waffle Gasket
- All Stainless-Steel Construction
- Tapered Gasket With Stainless Steel Bridge Plate
- One - Piece Lifter Bar

BENEFITS

- Works with Water and Natural Gas
- Resists corrosion in aggressive soils
- 360 - degree seal on entire OD range of clamp
- Aids in installation by helping to apply bolt torque evenly



DUCTILE IRON

CAST IRON

STEEL

PVC

ASBESTOS CEMENT*

* CAUTION - ASBESTOS AND OTHER MATERIALS MAY CAUSE CANCER AND DAMAGE TO LUNGS. DO NOT BREATHE DUST, AVOID CREATING DUST. Seek Expert Advice For Breathing Protection And Protective Equipment. Call OSHA 1-800-321-6742 for more information.



540 SERIES SINGLE SECTION FULL-SEAL® ALL STAINLESS STEEL CLAMPS



HYMAX 540 Series Single Section Full-Seal® All Stainless Steel Pipe Repair Clamps - for 2" through 12" cast iron, ductile iron, steel pipe, A-C and PVC pipe.

To specify the catalog number, provide the following information:

1. Style number—540
2. Length—Standard length available (inches): 7-1/2 (list as “7”), 12-1/2, 15, 20, 30
3. Size number—see chart on the following page
4. Catalog number prefix or suffix for optional features, if desired.

The catalog number for a 540 Single Section Full-Seal Repair Clamp, 12" long for 8" cast iron pipe is 540-12-899

Clamp style number	Clamp length	Clamp size number
512	12	899

Extra Nuts & Washers for HYMAX Single Section Full Seal All Stainless Repair Clamps

Clamp size	Bolt size	Bolt part number	Nut part number
2"-3-1/2"	-	-	-
4"-12" (standard nut)	5/8"	311581	311582

NOTE: 4" and larger 510 Series Clamps are provided with one starter bolt/nut per side as standard.

Deep socket wrenches

Specially designed for use with HYMAX Full-Seal Repair Clamps. Long ratchet handle has thumb-tip reverse. Deep sockets (3-1/4") have double hex (12 pt.) and 1/2" square drive.

Part number	Description
515204	15-3/4" with reversible ratchet handle
515207	1-1/16" socket for 2" and larger clamps

Bonding device for cathodic protection

Metallic conductors are set in the gasket to provide contact between the band and the pipe surface and are available on all 500 series clamps. These conductors permit electrical current flow by establishing positive contact with pipe and band on each side of the pipe crack or break.

To specify optional bonding device for cathodic protection, add a prefix of “2” to catalog number.

Example: 2-540-12-899.

Add-on feature allows long lengthwise repairs


The gasket is cemented into the band in a 1" offset position. This allows overlapping the gasket with the band of another offset clamp when repairing a longer than usual area of pipe. This feature is not available on Servi-Seal style clamps

To specify optional add-on feature for longer than usual repairs, add a prefix of “1” to catalog number.

Example: 1-540-12-899.

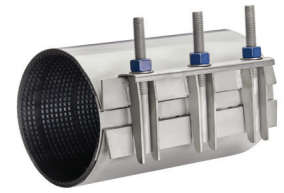
Note: For O.D. not shown contact our Customer Service Center or your HYMAX Sales Representative.

IMPORTANT: HYMAX PIPE REPAIR CLAMPS have demonstrated their capability to seal against water pressures commonly encountered in distribution systems. Smaller diameter clamps of a given design can seal against higher pressures than larger ones. In addition, the pressure that a clamp can contain is effected by the torque applied to the bolts, the uniformity of bolt tightening (when there is more than one bolt), as the type and extent of pipe damage, surface condition of the pipe, enviromental conditions, and installation workmanship

 **WARNING:** Use on A-C pipe, which contains a known carcinogen, requires appropriate protective equipment and procedures be employed.

540 SERIES SINGLE SECTION FULL-SEAL®

ALL STAINLESS STEEL CLAMPS



HYMAX 540 Series Single Section Full-Seal® All Stainless Steel Pipe Repair Clamps – for 2" through 12" cast iron, ductile iron, steel, A-C and PVC pipe. Standard Lengths: 7-1/2", 10", 12-1/2", 15", 20", 30"

Nominal Pipe Size	Clamp size - number	Clamp O.D. range*				Cast Iron	Ductile Iron	Cast Iron O.D. PVC	Steel***	A-C Rough Barrel
		Inches		Millimeters						
		Min.	Max	Min.	Max					
2"	235	2.35	2.63	59.7	66.8	50-250, A, B, C, D	All	-	2"	-
2-1/2"	270	2.70	3.00	68.6	76.2	50-250, A, B, C, D	All	-	2-1/2"	-
3"	297	2.97	3.25	75.5	82.5	-	-	-	3" O.D.	-
3"	345	3.45	3.72	87.9	94.4	-	-	-	3"	-
3"	373	3.73	4.00	94.8	101.6	50-250, A, B, C, D	All	-	-	-
3-1/2"	395	3.95	4.25	100.3	107.9	-	-	-	3-1/2" (4" O.D.)	-
4"	445	4.45	4.87	113.1	123.6	50-250, A	All	Class 150, 200	STD	-
4"	474	4.74	5.14	120.4	130.5	50-250, A, B, C, D	All	Class 150, 200	-	Class 100**, 150
4"	495	4.95	5.35	125.8	135.8	-	-	-	-	Class 100**, 150
4"	522	5.22	5.62	132.6	142.7	-	-	-	5" O.D.	Class 150, 200
6"	595	5.95	6.35	151.1	161.3	-	-	-	6" O.D.	-
6"	656	6.56	6.96	166.6	176.8	50-250, A	All	Class 150, 200	STD	-
6"	684	6.84	7.24	173.8	183.8	50-250, A, B, C, D	All	Class 150, 200	-	-
6"	705	7.05	7.45	179.1	189.2	-	-	-	-	Class 100**, 150
6"	740	7.40	7.80	188.0	198.1	-	-	-	-	Class 200
8"	795	7.95	8.35	201.9	212.1	-	-	-	-	-
8"	854	8.54	8.94	216.9	227.1	-	-	-	STD	-
8"	899	8.99	9.39	228.4	238.5	50-250, A, B, C, D	All	Class 150, 200	-	-
8"	927	9.27	9.67	235.5	245.6	-	-	-	-	Class 100**, 150
10"	970	9.70	10.10	246.4	256.5	-	-	-	10" O.D.	Class 200
10"	1070	10.70	11.10	271.8	281.9	-	-	-	STD	-
10"	1104	11.04	11.44	280.5	290.6	50-250, A, B, C, D	All	Class 150, 200	-	-
10"	1140	11.40	11.80	289.6	299.7	-	-	-	-	Class 100**
10"	1175	11.75	12.15	298.5	308.6	-	-	-	-	Class 150, 200
12"	1200	12.00	12.40	304.8	315.0	-	-	-	-	-
12"	1262	12.62	13.02	320.5	330.7	-	-	-	STD	-
12"	1310	13.10	13.50	332.7	342.9	50-250, A, B, C, D	All	Class 150, 200	-	-
12"	1340	13.40	13.80	340.4	350.5	-	-	-	-	Class 100**
12"	1400	14.00	14.40	355.7	365.7	-	-	-	-	Class 150, 200

*Verify pipe O.D. before selecting clamp size.

**CAUTION—O.D. of class 100 A-C pipe varies greatly. Measure pipe O.D. to assure proper clamp selection.

***Also fits PVC Plastic Pipe - ASTM D2241 SDR 17 and lower and ASTM D1785 schedule 80 and above.

540 SERIES SINGLE SECTION SERVI-SEAL®

ALL STAINLESS STEEL CLAMPS



HYMAX 541 - 549 Series Single Section Servi-Seal® All Stainless Steel Pipe Repair Clamps - with integral 3/4" through 2" IP/CC Threaded service outlet-for 2" through 12" cast iron, ductile iron, steel pipe, A-C and PVC pipe.

To specify the catalog number, provide the following information:

1. Style number—541-549 (see chart below)
2. Length—Standard length available (inches): 7-1/2 (list as “7”), 10, 12-1/2, 15, 20, 30
3. Size number—see chart on the following page
4. Catalog number prefix or suffix for optional features, if desired.

The catalog number for a Single Section Servi-Seal Repair Clamp with 3/4" IP outlet, 12" clamp length for 8" cast iron pipe is 541-12-899.

Clamp style number	Clamp length	Clamp size number
541	12	899

Clamp style number

Style number	Size/type of outlet tapping thread	Sizes available*
541	3/4" IP	2.35-14.40
542	3/4" CC	2.35-14.40
543	1" IP	2.35-14.40
544	1" CC	2.35-14.40
545	1-1/4" IP	4.45-14.00
546	1-1/2" CC	4.45-14.00
547	1-1/2" IP	4.45-14.00
548	2"CC	4.45-14.00
549	2"IP	4.45-14.00

*Clamps available to fit specific size pipe within this nominal size range.

Extra Nuts and Washers for HYMAX Single Section Full Seal All Stainless Repair Clamps

Clamp size	Bolt size	Bolt part number	Nut part number
4"-12" (standard nut)	5/8"	311581	311582

*Clamps available to fit specific size pipe within this nominal size range.

Deep socket wrenches

Specially designed for use with HYMAX Full-Seal Repair Clamps. Long ratchet handle has thumb- tip reverse. Deep sockets (3-1/4") have double hex (12 pt.) and 1/2" square drive.

Bonding device for cathodic protection

Metallic conductors are set in the gasket to provide contact between the band and the pipe surface and are available on all 500 series clamps. These conductors permit electrical current flow by establishing positive contact with pipe and band on each side of the pipe crack or break.

To specify optional bonding device for cathodic protection, add a prefix of “2” to catalog number.

Example: 2-541-12-899.

Part number	Description
515204	15-3/4" with reversible ratchet handle
515207	1-1/16" socket for 4" and larger clamps

Note: For O.D. not shown contact our Customer Service Center or your HYMAX Sales Representative.

IMPORTANT: HYMAX PIPE REPAIR CLAMPS have demonstrated their capability to seal against water pressures commonly encountered in distribution systems. Smaller diameter clamps of a given design can seal against higher pressures than larger ones. In addition, the pressure that a clamp can contain is effected by the torque applied to the bolts, the uniformity of bolt tightening (when there is more than one bolt), as well as the type and extent of pipe damage, surface condition of the

! WARNING: Use on A-C pipe, which contains a known carcinogen, requires appropriate protective equipment and procedures be employed.

540 SERIES SINGLE SECTION SERVI-SEAL®

ALL STAINLESS STEEL CLAMPS



HYMAX 541-549 Series Single Section Servi-Seal® All Stainless Steel Pipe Repair Clamps – for 2" through 12" cast iron, ductile iron, steel, A-C and PVC pipe. Standard Lengths: 7-1/2", 10", 12-1/2", 15", 20", 30"

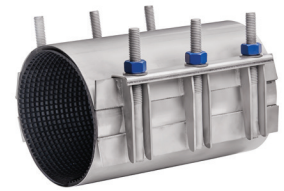
Nominal Pipe Size	Clamp size - number	Clamp O.D. range*		Cast Iron	Ductile Iron	Cast Iron O.D. PVC	Steel***	A-C Rough Barrel		
		Inches Min.	Inches Max						Millimeters Min.	Millimeters Max
2"	235	2.35	2.63	59.7	66.8	50-250, A, B, C, D	All	-	2"	-
2-1/2"	270	2.70	3.00	68.6	76.2	50-250, A, B, C, D	All	-	2-1/2"	-
3"	297	2.97	3.25	75.5	82.5	-	-	-	3" O.D.	-
3"	345	3.45	3.72	87.9	94.4	-	-	-	3"	-
3"	373	3.73	4.00	94.8	101.6	50-250, A, B, C, D	All	-	-	-
3-1/2"	395	3.95	4.25	100.3	107.9	-	-	-	3-1/2" (4" O.D.)	-
4"	445	4.45	4.87	113.1	123.6	50-250, A	All	Class 150, 200	STD	-
4"	474	4.74	5.14	120.4	130.5	50-250, A, B, C, D	All	Class 150, 200	-	Class 100**, 150
4"	495	4.95	5.35	125.8	135.8	-	-	-	-	Class 100**, 150
4"	522	5.22	5.62	132.6	142.7	-	-	-	5" O.D.	Class 150, 200
6"	595	5.95	6.35	151.1	161.3	-	-	-	6" O.D.	-
6"	656	6.56	6.96	166.6	176.8	50-250, A	All	Class 150, 200	STD	-
6"	684	6.84	7.24	173.8	183.8	50-250, A, B, C, D	All	Class 150, 200	-	-
6"	705	7.05	7.45	179.1	189.2	-	-	-	-	Class 100**, 150
6"	740	7.40	7.80	188.0	198.1	-	-	-	-	Class 200
8"	795	7.95	8.35	201.9	212.1	-	-	-	-	-
8"	854	8.54	8.94	216.9	227.1	-	-	-	STD	-
8"	899	8.99	9.39	228.4	238.5	50-250, A, B, C, D	All	Class 150, 200	-	-
8"	927	9.27	9.67	235.5	245.6	-	-	-	-	Class 100**, 150
10"	970	9.70	10.10	246.4	256.5	-	-	-	10" O.D.	Class 200
10"	1070	10.70	11.10	271.8	281.9	-	-	-	STD	-
10"	1104	11.04	11.44	280.5	290.6	50-250, A, B, C, D	All	Class 150, 200	-	-
10"	1140	11.40	11.80	289.6	299.7	-	-	-	-	Class 100**
10"	1175	11.75	12.15	298.5	308.6	-	-	-	-	Class 150, 200
12"	1200	12.00	12.40	304.8	315.0	-	-	-	-	-
12"	1262	12.62	13.02	320.5	330.7	-	-	-	STD	-
12"	1310	13.10	13.50	332.7	342.9	50-250, A, B, C, D	All	Class 150, 200	-	-
12"	1340	13.40	13.80	340.4	350.5	-	-	-	-	Class 100**

*Verify pipe O.D. before selecting clamp size.

**CAUTION—O.D. of class 100 A-C pipe varies greatly. Measure pipe O.D. to assure proper clamp selection.

***Also fits PVC Plastic Pipe - ASTM D2241 SDR 17 and lower and ASTM D1785 schedule 80 and above.

550 SERIES XTRA-RANGE® FULL-SEAL® ALL STAINLESS STEEL CLAMPS



HYMAX 550 Series Xtra-Range® Full-Seal® All Stainless Steel Pipe Repair Clamps - for 3" through 12" cast iron, ductile iron steel pipe, A-C and PVC pipe

To specify the catalog number, provide the following information:

1. Style number—550
2. Length—Standard length available (inches): 7-1/2, 10, 12-1/2, 15, 20, 30
3. Size number—see chart on the following page
4. Catalog number prefix for optional features, if desired.

The catalog number for a 550 Xtra-Range Full-Seal Repair Clamp, 12" long for 6" cast iron pipe is 550-12-684.

Clamp style number	Clamp length	Clamp size number
550	12	684

Extra Nuts and Washers for HYMAX Xtra-Range Full Seal All Stainless Repair Clamps

Clamp size	Bolt size	Bolt part number	Nut part number
3"-12" (standard nut)	5/8"	311581	311582

Deep socket wrenches

Specially designed for use with HYMAX Full-Seal Repair Clamps. Long ratchet handle has thumb-tip reverse. Deep sockets (3-1/4") have double hex (12 pt.) and 1/2" square drive.

Part number	Description
515204	15-3/4" with reversible ratchet handle
515207	1-1/16" socket for 2" and larger clamps

Bonding device for cathodic protection

Metallic conductors are set in the gasket to provide contact between the band and the pipe surface and are available on all 500 series clamps. These conductors permit electrical current flow by establishing positive contact with pipe and band on each side of the pipe crack or break.

To specify optional bonding device for cathodic protection, add a prefix of "2" to catalog number.
Example: 2-550-12-684.

Add-on feature allows long lengthwise repairs

The gasket is cemented into the band in a 1" offset position. This allows overlapping the gasket with the band of another offset clamp when repairing a longer than usual area of pipe. This feature is not available on Servi-Seal style clamps.

To specify optional add-on feature for longer than usual repairs, add a prefix of "1" to catalog number.
Example: 1-550-12-684.

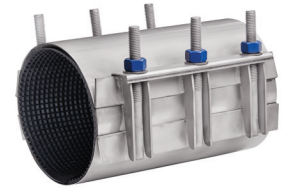
Note: For O.D. not shown contact our Customer Service Center or your HYMAX Sales Representative.

IMPORTANT: HYMAX PIPE REPAIR CLAMPS have demonstrated their capability to seal against water pressures commonly encountered in distribution systems. Smaller diameter clamps of a given design can seal against higher pressures than larger ones. In addition, the pressure that a clamp can contain is effected by the torque applied to the bolts, the uniformity of bolt tightening (when there is more than one bolt), as the type and extent of pipe damage, surface condition of the pipe, enviromental conditions, and installation workmanship



WARNING: Use on A-C pipe, which contains a known carcinogen, requires appropriate protective equipment and procedures be employed.

550 SERIES XTRA-RANGE® FULL-SEAL® ALL STAINLESS STEEL CLAMPS



HYMAX 550 Series Xtra-Range® Full-Seal® All Stainless Steel Pipe Repair Clamps - for 3" through 12" cast iron, ductile iron, A-C and PVC pipe.

Standard Lengths: 7-1/2", 10", 12-1/2", 15", 20", 30

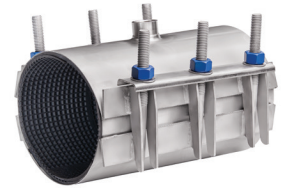
Nominal Pipe Size	Clamp size - number	Clamp O.D. range*				Cast Iron	Ductile Iron	Cast Iron O.D. PVC	Steel***	A-C Rough Barrel
		Inches		Millimeters						
		Min.	Max	Min.	Max					
3"	349	3.49	4.29	88.6	109.0	-	-	-	-	-
4"	444	4.44	5.24	112.8	133.1	-	-	-	-	-
4"	474	4.74	5.57	120.4	141.5	50-250, A, B, C, D	All	Class 150, 200	-	Class 100**, 150, 200
6"	662	6.62	7.42	168.1	188.5	-	-	-	STD	-
6"	684	6.84	7.64	173.7	194.7	50-250, A, B, C, D	All	Class 150, 200	-	Class 100**, 150, 200
8"	862	8.62	9.42	218.9	293.3	-	-	-	STD	-
8"	899	8.99	9.79	228.3	248.7	50-250, A, B, C, D	All	Class 150, 200	-	Class 100**, 150, 200
10"	1075	10.75	11.55	273.0	293.4	-	-	-	-	-
10"	1110	11.10	11.90	281.9	302.3	50-250, A, B, C, D	All	Class 150, 200	-	Class 100**
10"	1160	11.60	12.40	294.6	315.0	-	-	-	-	Class 150, 200
12"	1275	12.75	13.55	323.8	344.2	-	-	-	-	-
12"	1320	13.20	14.00	335.3	355.6	50-250, A, B, C, D	All	Class 150, 200	-	Class 100**
12"	1365	13.65	14.45	346.7	367.0	-	-	-	-	Class 100**, 150, 200
12"	1400	14.00	14.80	355.6	375.9	-	-	-	-	-
16"	1715	17.15	17.95	435.6	455.9	A,B,C,D	All	-	-	Class 100**
18"	1790	17.90	18.70	454.7	475.0	-	-	-	-	Class 100**, 150**, 200**
20"	2150	21.50	22.30	546.1	556.4	A,B,C,D	All	-	-	Class 100**

*Verify pipe O.D. before selecting clamp size.

**CAUTION—O.D. of class 100 A-C pipe varies greatly. Measure pipe O.D. to assure proper clamp selection.

550 SERIES XTRA-RANGE® SERVI-SEAL®

ALL STAINLESS STEEL CLAMPS



HYMAX 551 - 559 Xtra-Range® Servi-Seal® All Stainless Steel Pipe Repair Clamps - with 3/4" through 2" IP/CC Threaded service outlet - for 3" through 12" cast iron, ductile iron steel, A-C and PVC pipe

To specify the catalog number, provide the following information:

1. Style number—551-559 (see chart below)
2. Length—Standard length available (inches): 7-1/2, 10, 12-1/2, 15, 20, 30
3. Size number—see chart on the following page
4. Catalog number prefix for optional features, if desired.

The catalog number for a Xtra-Range Servi-Seal Repair Clamp, with a 3/4" IP outlet, 12" clamp length for 6" cast iron pipe is 551-12-684

Clamp style number	Clamp length	Clamp size number
551	12	684

Clamp style number

Style number	Size/type of outlet tapping thread	Sizes available*
551	3/4" IP	3.49-14.80
552	3/4" CC	3.49-14.80
553	1" IP	3.49-14.80
554	1" CC	3.49-14.80
555	1-1/4" IP	4.74-14.80
556	1-1/2" CC	4.74-14.80
557	1-1/2" IP	4.74-14.80
558	2" CC	4.74-14.80
559	2" IP	4.74-14.80

*Clamps available to fit specific size pipe within this nominal size range.

Extra Nuts and Washers for HYMAX Single Section Full Seal All Stainless Repair Clamps

Clamp size	Nut part number	Washer part number
3"-12" (standard nut)	311581	311582

Deep socket wrenches

Specially designed for use with HYMAX Full-Seal Repair Clamps. Long ratchet handle has thumb-tip reverse. Deep sockets (3-1/4") have double hex (12 pt.) and 1/2" square drive.

Part number	Description
515204	15-3/4" with reversible ratchet handle
515207	1-1/16" socket for 4" and larger clamps

Bonding device for cathodic protection

Metallic conductors are set in the gasket to provide contact between the band and the pipe surface and are available on all 500 series clamps. These conductors permit electrical current flow by establishing positive contact with pipe and band on each side of the pipe crack or break.

To specify optional bonding device for cathodic protection, add a prefix of "2" to catalog number.

Example: 2-551-12-684

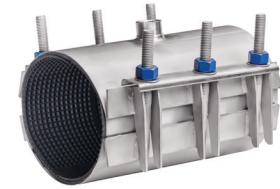
Note: For O.D. not shown contact our Customer Service Center or your HYMAX Sales Representative.

IMPORTANT: HYMAX PIPE REPAIR CLAMPS have demonstrated their capability to seal against water pressures commonly encountered in distribution systems. Smaller diameter clamps of a given design can seal against higher pressures than larger ones. In addition, the pressure that a clamp can contain depends upon the torque applied to the bolts, the uniformity of bolt tightening (when there is more than one bolt), as well as the type and extent of pipe damage, surface condition of the pipe, environmental conditions, and installation workmanship.

! WARNING: Use on A-C pipe, which contains a known carcinogen, requires appropriate protective equipment and procedures be employed.

550 SERIES XTRA-RANGE® SERVI-SEAL®

ALL STAINLESS STEEL CLAMPS



HYMAX 551-559 Series Xtra-Range® Servi-Seal® All Stainless Steel Pipe Repair Clamps for 3" through 12" cast iron, ductile iron, A-C and PVC plastic pipe. Standard Lengths: 7-1/2", 10", 12-1/2", 15", 20", 30"

Nominal Pipe Size	Clamp size - number	Clamp O.D. range*				Cast Iron	Ductile Iron	Cast Iron O.D. PVC	Steel***	A-C Rough Barrel
		Inches		Millimeters						
		Min.	Max	Min.	Max					
3"	349	3.49	4.29	88.6	109.0	-	-	-	-	-
4"	444	4.44	5.24	112.8	133.1	-	-	-	-	-
4"	474	4.74	5.57	120.4	141.5	50-250, A, B, C, D	All	Class 150, 200	-	Class 100**, 150, 200
6"	662	6.62	7.42	168.1	188.5	-	-	-	STD	-
6"	684	6.84	7.64	173.7	194.7	50-250, A, B, C, D	All	Class 150, 200	-	Class 100**, 150, 200
8"	862	8.62	9.42	218.9	293.3	-	-	-	STD	-
8"	899	8.99	9.79	228.3	248.7	50-250, A, B, C, D	All	Class 150, 200	-	Class 100**, 150, 200
10"	1075	10.75	11.55	273.0	293.4	-	-	-	-	-
10"	1110	11.10	11.90	281.9	302.3	50-250, A, B, C, D	All	Class 150, 200	-	Class 100**
10"	1160	11.60	12.40	294.6	315.0	-	-	-	-	Class 150, 200
12"	1275	12.75	13.55	323.8	344.2	-	-	-	-	-
12"	1320	13.20	14.00	335.3	355.6	50-250, A, B, C, D	All	Class 150, 200	-	Class 100**
12"	1365	13.65	14.45	346.7	367.0	-	-	-	-	Class 100**, 150, 200
12"	1400	14.00	14.80	355.6	375.9	-	-	-	-	-
16"	1715	17.15	17.95	435.6	455.9	A,B,C,D	All	-	-	Class 100**
18"	1790	17.90	18.70	454.7	475.0	-	-	-	-	Class 100**, 150**, 200**
20"	2150	21.50	22.30	546.1	556.4	A,B,C,D	All	-	-	Class 100**

*Verify pipe O.D. before selecting clamp size.

**CAUTION—O.D. of class 100 A-C pipe varies greatly. Measure pipe O.D. to assure proper clamp selection.

500/510/773 SERIES CLAMP

Ductile Lug Style Clamp

High efficiency, Ductile Lug Clamps offer long life in most soils and atmospheres. Available in single-section Full Seal® style (500 Series), two-section Xtra Range® style (510 Series) and Servi-Seal® style with welded-in service outlet in both single and double section. Each clamp size can accommodate a wide range of O.D. variations.

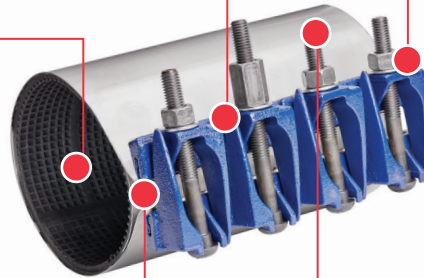
The 773 Series Clamp is designed specifically for use on PE-160 PVC pipe solvent weld joints. It has a special stepped gasket that fits over the joint to stop leaks. The 773 Series resembles the 500 Series in most respects — it is a single-section style with ductile iron lugs.

EXCLUSIVE DUCTILE IRON LUG DESIGN

304L STAINLESS STEEL BAND

360 TAPERED-END GRIDDED GASKET

MOLDED IN STAINLESS STEEL GAP BRIDGE



CORROSION RESISTANT BOLTS AND NUTS

FEATURES

- Nitrile Waffle Gasket
- Alloy or Stainless-Steel Bolts
- Tapered Gasket With Stainless Steel Bridge Plate
- Ductile Iron Lugs

BENEFITS

- Works with Water and Natural Gas
- Resists corrosion in aggressive soils
- 360 - degree seal on entire OD range of clamp
- Bolts are replaceable if galled during installation



* CAUTION - ASBESTOS AND OTHER MATERIALS MAY CAUSE CANCER AND DAMAGE TO LUNGS. DO NOT BREATHE DUST, AVOID CREATING DUST. Seek Expert Advice For Breathing Protection And Protective Equipment Call OSHA 1-800-321-6742 for more information.



500 SERIES SINGLE SECTION FULL-SEAL® CLAMPS



HYMAX 500 Series Single Section Full-Seal® Pipe Repair Clamps - for 2" through 12" cast iron, ductile iron, steel pipe, A-C and PVC pipe

To specify the catalog number, provide the following information:

1. Style number—500
2. Length—Standard length available (inches): 6, 7-1/2 (list as “7”), 9, 12, 15, 18, 20, 24, 30
3. Size number—see chart on the following page
4. Catalog number prefix or suffix for optional features, if desired.

The catalog number for 500 Single Section Full-Seal Repair Clamp, 12" long for 8" cast iron pipe is 500-12-899.

Clamp style number	Clamp length	Clamp size number
500	12	899

Extra bolts and nuts for 500 series HYMAX Single Section Full Seal Repair Clamps

Clamp size	Bolt size	Bolt part number	Nut part number
2"-3-1/2"	1/2"-4-1/2"	533942	522998
4"-12" (standard bolt and nut)	5/8"x6"	533937	195236
4"-12" (starter bolt and nut)	5/8"x7"	533938	526655

NOTE: 4" and larger 500 Series Clamps are provided with one starter bolt/nut per side as standard.

Stainless steel bolts

For optional 304 stainless steel bolts, washers and nuts, add “S-” prefix to clamp catalog number S-500-12-899

Deep socket wrenches

Specially designed for use with HYMAX Full-Seal Repair Clamps. Long ratchet handle has thumb-tip reverse. Deep sockets (3-1/4") have double hex (12 pt.) and 1/2" square drive.

Part number	Description
515204	15-3/4" with reversible ratchet handle
520344	7/8" socket for 2" through 3-1/2" clamps
515207	1-1/16" socket for 4" and larger clamps
519575	1/2"x3/4" adapter

Bonding device for cathodic protection

Metallic conductors are set in the gasket to provide contact between the band and the pipe surface and are available on all 500 series clamps. These conductors permit electrical current flow by establishing positive contact with pipe and band on each side of the pipe crack or break for cathodic protection, add a prefix of “2” to catalog number.

2-500-12-899.

Add-on feature allows long lengthwise repairs

The gasket is cemented into the band in a 1" offset position. This allows overlapping the gasket with the band of another offset clamp when repairing a longer than usual area of pipe. This feature is not available on Servi-Seal style clamps for longer than usual repairs, add a prefix of “1” to catalog number 1-500-12-899.

Note: For O.D. not shown contact our Customer Service Center or your HYMAX Sales Representative.

IMPORTANT: HYMAX PIPE REPAIR CLAMPS have demonstrated their capability to seal against water pressures commonly encountered in distribution systems. Smaller diameter clamps of a given design can seal against higher pressures than larger ones. In addition, the pressure that a clamp can contain is effected by the torque applied to the bolts, the uniformity of bolt tightening (when there is more than one bolt), as the type and extent of pipe damage, surface condition of the pipe, environmental conditions, and installation workmanship.

500 SERIES SINGLE SECTION FULL-SEAL® CLAMPS



HYMAX 500 Series Single Section Full-Seal® Pipe Repair Clamps — for 2" through 12" cast iron, ductile iron, steel, A-C and PVC pipe.

Standard Lengths: 6", 7-1/2", 9", 10", 12", 15", 18", 20", 24", 30"

Nominal Pipe Size	Clamp size - number	Clamp O.D. range*				Cast Iron	Ductile Iron	Cast Iron O.D. PVC	Steel***	A-C Rough Barrel
		Inches		Millimeters						
		Min.	Max	Min.	Max					
2"	235	2.35	2.63	59.7	66.8	50-250, A, B, C, D	All	-	2"	-
2-1/2"	270	2.70	2.98	68.6	75.7	50-250, A, B, C, D	All	-	2-1/2"	-
3"	297	2.97	3.25	75.5	82.5	-	-	-	3" O.D.	-
3"	346	3.46	3.72	87.9	94.4	50-250, A, B, C, D	All	-	3"	-
3"	373	3.73	4.00	94.8	101.6	-	-	-	-	-
3-1/2"	396	3.96	4.25	100.6	107.9	-	-	-	3-1/2" (4" O.D.)	-
4"	445	4.45	4.87	113.1	123.6	50-250, A	All	Class 150, 200	STD	-
4"	474	4.74	5.14	120.4	130.5	50-250, A, B, C, D	All	Class 150, 200	-	Class 100**, 150
4"	495	4.95	5.35	125.8	135.8	-	-	-	-	Class 100**, 150
4"	520	5.20	5.60	132.1	142.2	-	-	-	-	Class 150, 200
6"	566	5.66	5.91	143.7	150.1	-	-	-	-	-
6"	594	5.94	6.34	150.9	161.0	-	-	-	STD	-
6"	634	6.34	6.74	163.3	171.2	-	-	-	STD	-
6"	642	6.42	6.82	163.06	173.22	-	-	-	STD	-
6"	655	6.55	6.97	164.4	177.0	50-250, A	All	Class 150, 200	STD	-
6"	684	6.84	7.24	173.8	183.8	50-250, A, B, C, D	All	Class 150, 200	-	-
6"	704	7.04	7.44	178.9	188.9	-	-	-	-	Class 100**, 150
6"	722	7.22	7.62	183.4	193.5	-	-	-	-	Class 200
8"	792	7.92	8.32	201.1	211.3	-	-	-	8" O.D.	-
8"	836	8.36	8.76	212.3	222.2	-	-	-	-	-
8"	853	8.53	8.93	216.7	226.8	-	-	-	STD	-
8"	899	8.99	9.39	228.4	238.5	50-250, A, B, C, D	All	Class 150, 200	-	-
8"	925	9.25	9.65	235.0	245.1	-	-	-	-	Class 100**, 150
8"	940	9.40	9.80	238.8	248.9	-	-	-	-	Class 200
10"	990	9.90	10.30	251.4	261.6	-	-	-	10" O.D.	-
10"	1040	10.40	10.80	264.1	274.3	-	-	-	-	-
10"	1064	10.64	11.04	270.3	280.4	-	-	-	STD	-
10"	1104	11.04	11.46	280.5	291.0	50-250, A, B, C, D	All	Class 150, 200	-	-
10"	1137	11.37	11.77	288.8	298.9	-	-	-	-	Class 100**
10"	1175	11.75	12.15	298.5	308.6	-	-	-	12" O.D.	Class 100, 150
10"	1200	12.00	12.40	304.8	315.0	-	-	-	-	-
10"	1220	12.20	12.60	309.9	320.0	-	-	-	-	-
10"	1246	12.46	12.86	316.5	326.6	-	-	-	-	-
12"	1260	12.60	13.00	320.1	330.2	-	-	-	STD	-
12"	1314	13.14	13.56	338.8	344.4	50-250, A, B, C, D	All	Class 150, 200	-	-
12"	1356	13.56	13.96	344.5	354.5	-	-	-	-	Class 100**
12"	1400	14.00	14.40	355.7	365.7	-	-	-	14"	Class 150, 200

* Verify pipe O.D. before selecting clamp size.

** CAUTION—O.D. of class 100 A-C pipe varies greatly. Measure pipe O.D. to assure proper clamp selection.

***Also fits PVC Plastic Pipe - ASTM D2241 SDR 17 and lower and ASTM D1785 schedule 80 and above.

500 SERIES SINGLE SECTION SERVI-SEAL® PIPE REPAIR CLAMPS



HYMAX Single Section Servi-Seal® Pipe Repair Clamps - with integral 3/4" through 2" IP/CC Threaded service outlet - for 2" through 12" cast iron, ductile iron, steel pipe, A-C and PVC pipe.

To specify the catalog number, provide the following information:

1. Style number—501-509 (see chart below)
2. Length—Standard length available (inches): 5, 6, 7-1/2 (list as “7”), 9, 12, 15, 18, 20, 24, 30
3. Size number—see chart on the following page
4. Catalog number prefix or suffix for optional features, if desired.

The catalog number for a Single Section Servi-Seal Repair Clamp with 3/4" IP outlet, 12" long for 8" cast iron pipe is 501-12-899.

Clamp style number	Clamp length	Clamp size number
501	12	899

Clamp style number

Style number	Size/type of outlet tapping thread	Sizes available*
501	3/4" IP	2.35-14.00
502	3/4" CC	2.35-14.00
503	1" IP	2.35-14.00
504	1" CC	2.35-14.00
505	1-1/4" IP	4.45-14.00
506	1-1/2" CC	4.45-14.00
507	1-1/2" IP	4.45-14.00
508	2"CC	4.45-14.00
509	2"IP	4.45-14.00

*Clamps available to fit specific size pipe within this nominal size range.

Extra bolts and nuts for HYMAX Single Section Servi-Seal Repair Clamps

Clamp size	Bolt size	Bolt part number	Nut part number
2"-3-1/2"	1/2"-6"	521009	521010
4"-12" (standard bolt and nut)	5/8"x6"	521008	195236
4"-12" (starter bolt and nut)	5/8x7"	524308	526655

NOTE: 4" and larger 500 Series Clamps are provided with one starter bolt/nut per side as standard.

Stainless steel bolts

For optional 304 stainless steel bolts, washers and nuts, add “S-” prefix to clamp catalog number.

Example: S-501-12-899.

Deep socket wrenches

Specially designed for use with HYMAX Full-Seal Repair Clamps. Long ratchet handle has thumb- tip reverse.

Deep sockets (3-1/4") have double hex (12 pt.) and 1/2" square drive.

Example: 2-501-12-899.

Part number	Description
515204	15-3/4" with reversible ratchet handle
520344	7/8" socket for 2" through 3-1/2" clamps
515207	1-1/16" socket for 4" and larger clamps
519575	1/2"x3/4" adapter

Note: For O.D. not shown contact our Customer Service Center or your HYMAX Sales Representative.

IMPORTANT: HYMAX PIPE REPAIR CLAMPS have demonstrated their capability to seal against water pressures commonly encountered in distribution systems. Smaller diameter clamps of a given design can seal against higher pressures than larger ones. In addition, the pressure that a clamp can contain is effected by the torque applied to the bolts, the uniformity of bolt tightening (when there is more than one bolt), as the type and extent of pipe damage, surface condition of the pipe, enviromental conditions, and installation workmanship

500 SERIES SINGLE SECTION SERVI-SEAL® PIPE REPAIR CLAMPS



HYMAX 501-509 Series Single Section Servi-Seal® Pipe Repair Clamps — for 2" through 12" cast iron, ductile iron, steel, A-C and PVC pipe.

Standard Lengths: 6", 7-1/2", 9", 10", 12", 15", 18", 20", 24", 30"

Nominal Pipe Size	Clamp size - number	Clamp O.D. range*				Cast Iron	Ductile Iron	Cast Iron O.D. PVC	Steel***	A-C Rough Barrel
		Inches		Millimeters						
		Min.	Max	Min.	Max					
2"	235	2.35	2.63	59.7	66.8	50-250, A, B, C, D	All	-	2"	-
2-1/2"	270	2.70	2.98	68.6	75.7	50-250, A, B, C, D	All	-	2-1/2"	-
3"	297	2.97	3.25	75.5	82.5	-	-	-	3" O.D.	-
3"	346	3.46	3.72	87.9	94.4	50-250, A, B, C, D	All	-	3"	-
3"	373	3.73	4.00	94.8	101.6	-	-	-	-	-
3-1/2"	396	3.96	4.25	100.6	107.9	-	-	-	3-1/2" (4" O.D.)	-
4"	445	4.45	4.87	113.1	123.6	50-250, A	All	Class 150, 200	STD	-
4"	474	4.74	5.14	120.4	130.5	50-250, A, B, C, D	All	Class 150, 200	-	Class 100**, 150
4"	495	4.95	5.35	125.8	135.8	-	-	-	-	Class 100**, 150
4"	520	5.20	5.60	132.1	142.2	-	-	-	-	Class 150, 200
6"	566	5.66	5.91	143.7	150.1	-	-	-	-	-
6"	594	5.94	6.34	150.9	161.0	-	-	-	6" O.D.	-
6"	634	6.34	6.74	163.3	171.2	-	-	-	STD	-
6"	655	6.55	6.97	164.4	177.0	50-250, A	All	Class 150, 200	STD	-
6"	684	6.84	7.24	173.8	183.8	50-250, A, B, C, D	All	Class 150, 200	-	-
6"	704	7.04	7.44	178.9	188.9	-	-	-	-	Class 100**, 150
6"	722	7.22	7.62	183.4	193.5	-	-	-	-	Class 200
8"	792	7.92	8.32	201.1	211.3	-	-	-	8" O.D.	-
8"	836	8.36	8.76	212.3	222.2	-	-	-	-	-
8"	853	8.53	8.93	216.7	226.8	-	-	-	STD	-
8"	899	8.99	9.39	228.4	238.5	50-250, A, B, C, D	All	Class 150, 200	-	-
8"	925	9.25	9.65	235.0	245.1	-	-	-	-	Class 100**, 150
8"	940	9.40	9.80	238.8	248.9	-	-	-	-	Class 200
10"	990	9.90	10.30	251.4	261.6	-	-	-	10" O.D.	-
10"	1040	10.40	10.80	264.1	274.3	-	-	-	-	-
10"	1064	10.64	11.04	270.3	280.4	-	-	-	STD	-
10"	1104	11.04	11.46	280.5	291.0	50-250, A, B, C, D	-	Class 150, 200	-	-
10"	1137	11.37	11.77	288.8	298.9	-	-	-	-	Class 100**
10"	1175	11.75	12.15	298.5	308.6	-	-	-	12" O.D.	Class 100, 150
12"	1200	12.00	12.40	304.8	315.0	-	-	-	-	-
12"	1220	12.20	12.60	309.9	320.0	-	-	-	-	-
12"	1246	12.46	12.86	316.5	326.6	-	-	-	-	-
12"	1260	12.60	13.00	320.1	330.2	-	-	-	STD	-
12"	1314	13.14	13.56	338.8	344.4	50-250, A, B, C, D	All	Class 150, 200	-	-
12"	1356	13.56	13.96	344.5	354.5	-	-	-	-	Class 100**
12"	1400	14.00	14.40	355.7	365.7	-	-	-	14"	Class 150, 200

*Verify pipe O.D. before selecting clamp size.

**CAUTION—O.D. of class 100 A-C pipe varies greatly. Measure pipe O.D. to assure proper clamp selection.

***Also fits PVC Plastic Pipe - ASTM D2241 SDR 17 and lower and ASTM D1785 schedule 80 and above.

510 SERIES XTRA-RANGE® FULL-SEAL® CLAMPS



HYMAX 510 Series Xtra-Range® Full-Seal® Pipe Repair Clamps - for 4" through 24" cast iron, ductile iron, steel pipe, A-C and PVC pipe.

To specify the catalog number, provide the following information:

1. Style number—510
2. Length—Standard length available (inches): 6, 7-1/2 (list as “7”), 9, 12, 15, 18, 20, 24, 30
3. Size number—see chart on the following page
4. Catalog number prefix or suffix for optional features, if desired.

The catalog number for a 510 Xtra-Range Full-Seal Repair Clamp, 12" long for 6" cast iron pipe is 510-12-675

Clamp style number	Clamp length	Clamp size number
510	12	675

Extra bolts and nuts for HYMAX Xtra-Range Full Seal Repair Clamps

Clamp size	Bolt size	Bolt part number	Nut part number
4"-12" (standard bolt and nut)	5/8"x6"	521008	195236
4"-12" (starter bolt and nut)	5/8"x7"	524308	526655

NOTE: 4" and larger 510 Series Clamps are provided with one starter bolt/nut per side as standard.

Stainless steel bolts

For optional 304 stainless steel bolts, washers and nuts, add “S-” prefix to clamp catalog number.
Example: S-510-12-675.

Deep socket wrenches

Specially designed for use with HYMAX Full-Seal Repair Clamps. Long ratchet handle has thumb-tip reverse. Deep sockets (3-1/4") have double hex (12 pt.) and 1/2" square drive.

Part number	Description
515207	1-1/16" socket
515204	15-3/4" with reversible ratchet handle
519575	1/2"x3/4" adapter

Bonding device for cathodic protection

Metallic conductors are set in the gasket to provide contact between the band and the pipe surface and are available on all 500 series clamps. These conductors permit electrical current flow by establishing positive contact with pipe and band on each side of the pipe crack or break.

To specify optional bonding device for cathodic protection, add a prefix of “2” to catalog number.
Example: 2-510-12-675.

Add-on feature allows long lengthwise repairs

The gasket is cemented into the band in a 1" offset position. This allows overlapping the gasket with the band of another offset clamp when repairing a longer than usual area of pipe. This feature is not available on Servi-Seal style clamps. To specify optional add-on feature for longer than usual repairs, add a prefix of “1” to catalog number.

Example: 1-510-12-675

Note: For O.D. not shown contact our Customer Service Center or your HYMAX Sales Representative.

IMPORTANT: HYMAX PIPE REPAIR CLAMPS have demonstrated their capability to seal against water pressures commonly encountered in distribution systems. Smaller diameter clamps of a given design can seal against higher pressures than larger ones. In addition, the pressure that a clamp can contain is effected by the torque applied to the bolts, the uniformity of bolt tightening (when there is more than one bolt), as the type and extent of pipe damage, surface condition of the pipe, environmental conditions, and installation workmanship

510 SERIES XTRA-RANGE® FULL-SEAL® CLAMPS



HYMAX 510 Series Xtra-Range® Full-Seal® Pipe Repair Clamps — for 4" through 24" cast iron, ductile iron, steel, A-C and PVC pipe.

Standard Lengths: 6", 7-1/2", 9", 10", 12", 15", 18", 20", 24", 30"

Nominal Pipe Size	Clamp size - number	Clamp O.D. range*				Cast Iron	Ductile Iron	Cast Iron O.D. PVC	Steel***	A-C Rough Barrel
		Inches		Millimeters						
		Min.	Max	Min.	Max					
4"	470	4.50	5.50	119.4	139.7	50-250, A, B, C, D	All	Class 150, 200	-	Class 100**, 150, 200
6"	662	6.62	7.42	168.1	188.5	-	-	-	STD	-
6"	675	6.75	7.55	171.5	191.7	50-250, A, B, C, D	All	Class 150, 200	-	Class 100**, 150, 200
8"	862	8.62	9.42	218.9	293.3	-	-	-	STD	-
8"	888	8.88	9.68	225.6	245.8	50-250, A, B, C, D	All	Class 150, 200	-	Class 100**, 150, 200
10"	1072	10.72	11.72	272.3	297.7	-	-	-	STD	-
10"	1105	11.05	12.05	280.7	306.0	50-250, A, B, C, D	All	Class 150, 200	12" O.D.	Class 100**, 150, 200
12"	1246	12.46	13.26	316.5	336.8	-	-	-	STD	-
12"	1310	13.10	14.30	332.8	363.2	50-250, A, B, C, D	All	Class 150, 200	14"	Class 100**, 150, 200
14"	1433	14.33	15.13	364.0	384.3	-	-	-	-	-
14"	1510	15.10	15.90	383.6	403.8	50-250, A, B, C, D	All	-	-	Class 100**
16"	1590	15.90	16.70	403.9	424.1	-	-	-	16"	-
16"	1655	16.55	17.35	420.4	440.6	-	-	-	-	14" Class 150, 200
16"	1720	17.20	18.00	436.9	457.2	50-250, A, B, C, D	All	-	-	Class 100**
18"	1760	17.60	18.40	447.1	467.3	-	-	-	18"	-
18"	1841	18.41	19.21	467.7	487.9	-	-	-	-	16" Class 150, 200
18"	1922	19.22	20.02	488.2	508.5	50-250, A, B, C, D	All	-	-	-
20"	1990	19.90	20.70	505.5	525.7	-	-	-	20"	Class 100**
20"	2070	20.70	21.50	525.8	546.1	-	-	-	-	18" Class 150
20"	2145	21.45	22.25	544.9	565.1	50-250, A, B, C, D	All	-	22"	-
20"	2220	22.20	23.00	563.9	584.2	-	-	-	-	20" Class 100** 18" Class 150
20"	2280	22.80	23.60	579.2	599.4	-	-	-	-	-
24"	2344	23.44	24.24	595.4	615.6	-	-	-	24"	20" Class 150
24"	2420	24.20	25.00	614.7	635.0	-	-	-	-	20" Class 200
24"	2490	24.90	25.70	632.5	652.7	-	-	-	-	20" Class 200
24"	2566	25.66	26.46	651.8	672.0	50-250, A, B, C, D	-	-	26"	-
24"	2672	26.72	27.52	678.7	699.0	-	-	-	-	Class 100**
24"	2772	27.72	28.52	704.1	724.4	-	-	-	28"	Class 150
24"	2863	28.63	29.83	727.3	757.6	-	-	-	-	-
24"	2957	29.57	30.77	751.1	781.5	-	-	-	30"	Class 200
30"	3122	31.22	32.42	793.0	823.5	-	-	-	-	-
36"	3786	37.86	39.16	961.6	994.7	-	-	-	-	-

*Verify pipe O.D. before selecting clamp size.

**CAUTION—O.D. of class 100 A-C pipe varies greatly. Measure pipe O.D. to assure proper clamp selection.

***Also fits PVC Plastic Pipe - ASTM D2241 SDR 17 and lower and ASTM D1785 schedule 80 and above.

510 SERIES XTRA-RANGE® SERVI-SEAL® CLAMPS



HYMAX 511 - 519 Series Xtra-Range® Servi-Seal® Pipe Repair Clamps - with integral 3/4" through 2" IP/CC threaded service outlet - for 4" through 24" cast iron, ductile iron, steel pipe, A-C and PVC plastic pipe.

To specify the catalog number, provide the following information:

1. Style number—511-519 (see chart below)
2. Length—Standard length available (inches): 6, 7-1/2 (list as "7"), 9, 12, 15, 18, 20, 24, 30
3. Size number—see chart on the following page
4. Catalog number prefix or suffix for optional features, if desired.

The catalog number for a Xtra-Range Servi-Seal Repair Clamp, with 3/4" IP thread tapped outlet, 12" clamp length for 6" cast iron pipe is 511-12-675.

Clamp style number	Clamp length	Clamp size number
511	12	675

Clamp style number

Style number	Size/type of outlet tapping thread	Sizes available*
511	3/4" IP	4.70-37.86
512	3/4" CC	4.70-37.86
513	1" IP	4.70-37.86
514	1" CC	4.70-37.86
515	1-1/4" IP	4.70-37.86
516	1-1/2" CC	4.70-37.86
517	1-1/2" IP	4.70-37.86
518	2"CC	4.70-37.86
519	2"IP	4.70-37.86

*Clamps available to fit specific size pipe within this nominal size range.

Extra bolts and nuts for HYMAX Xtra-Range Full Seal Repair Clamps

Clamp size	Bolt size	Bolt part number	Nut part number
4"-12" (standard bolt and nut)	5/8"x6"	521008	195236
4"-12" (starter bolt and nut)	5/8x7"	524308	526655

NOTE: 4" and larger 500 Series Clamps are provided with one starter bolt/nut per side as standard.

Stainless steel bolts

For optional 304 stainless steel bolts, washers and nuts, add "S-" prefix to clamp catalog number.

Example: S-511-12-675.

Deep socket wrenches

Specially designed for use with HYMAX Full-Seal Repair Clamps. Long ratchet handle has thumb-tip reverse.

Deep sockets (3-1/4") have double hex (12 pt.) and 1/2" square drive.

Example: 2-511-12-675.

Part number	Description
515207	1-1/16" socket for 4" and larger clamps
515204	15-3/4" with reversible ratchet handle
519575	1/2"x3/4" adapter

Note: For O.D. not shown contact our Customer Service Center or your HYMAX Sales Representative.

IMPORTANT: HYMAX PIPE REPAIR CLAMPS have demonstrated their capability to seal against water pressures commonly encountered in distribution systems. Smaller diameter clamps of a given design can seal against higher pressures than larger ones. In addition, the pressure that a clamp can contain depends upon the torque applied to the bolts, the uniformity of bolt tightening (when there is more than one bolt), as well as the type and extent of pipe damage, surface condition of the pipe, environmental conditions, and installation workmanship.

510 SERIES XTRA-RANGE® SERVI-SEAL® CLAMPS



HYMAX 511-519 Series Xtra-Range® Full-Seal Pipe Repair Clamps — for 4" through 24" cast iron, ductile iron, steel, A-C and PVC pipe.

Standard Lengths: 6", 7-1/2", 9", 10", 12", 15", 18", 20", 24", 30"

Nominal Pipe Size	Clamp size - number	Clamp O.D. range*				Cast Iron	Ductile Iron	Cast Iron O.D. PVC	Steel***	A-C Rough Barrel
		Inches		Millimeters						
		Min.	Max	Min.	Max					
4"	470	4.50	5.50	119.4	139.7	50-250, A, B, C, D	All	Class 150, 200	-	Class 100**, 150, 200
6"	662	6.62	7.42	168.1	188.5	-	-	-	STD	-
6"	675	6.75	7.55	171.5	191.7	50-250, A, B, C, D	All	Class 150, 200	-	Class 100**, 150, 200
8"	862	8.62	9.42	218.9	293.3	-	-	-	STD	-
8"	888	8.88	9.68	225.6	245.8	50-250, A, B, C, D	All	Class 150, 200	-	Class 100**, 150, 200
10"	1072	10.72	11.72	272.3	297.7	-	-	-	STD	-
10"	1105	11.05	12.05	280.7	306.0	50-250, A, B, C, D	All	Class 150, 200	12" O.D.	Class 100**, 150, 200
12"	1246	12.46	13.26	316.5	336.8	-	-	-	STD	-
12"	1310	13.10	14.30	332.8	363.2	50-250, A, B, C, D	All	Class 150, 200	14"	Class 100**, 150, 200
14"	1433	14.33	15.13	364.0	384.3	-	-	-	-	-
14"	1510	15.10	15.90	383.6	403.8	50-250, A, B, C, D	All	-	-	Class 100**
16"	1590	15.90	16.70	403.9	424.1	-	-	-	16"	-
16"	1655	16.55	17.35	420.4	440.6	-	-	-	-	14" Class 150, 200
16"	1720	17.20	18.00	436.9	457.2	50-250, A, B, C, D	All	-	-	Class 100**
18"	1760	17.60	18.40	447.1	467.3	-	-	-	18"	-
18"	1841	18.41	19.21	467.7	487.9	-	-	-	-	16" Class 150, 200
18"	1922	19.22	20.02	488.2	508.5	50-250, A, B, C, D	All	-	-	-
20"	1990	19.90	20.70	505.5	525.7	-	-	-	20"	Class 100**
20"	2070	20.70	21.50	525.8	546.1	-	-	-	-	18" Class 150
20"	2145	21.45	22.25	544.9	565.1	50-250, A, B, C, D	All	-	22"	-
20"	2220	22.20	23.00	563.9	584.2	-	-	-	-	20" Class 100** 18" Class 150
20"	2280	22.80	23.60	579.2	599.4	-	-	-	-	-
24"	2344	23.44	24.24	595.4	615.6	-	-	-	24"	20" Class 150
24"	2420	24.20	25.00	614.7	635.0	-	-	-	-	20" Class 200
24"	2490	24.90	25.70	632.5	652.7	-	-	-	-	20" Class 200
24"	2566	25.66	26.46	651.8	672.0	50-250, A, B, C, D	-	-	26"	-
24"	2672	26.72	27.52	678.7	699.0	-	-	-	-	Class 100**
24"	2772	27.72	28.52	704.1	724.4	-	-	-	28"	Class 150
24"	2863	28.63	29.83	727.3	757.6	-	-	-	-	-
24"	2957	29.57	30.77	751.1	781.5	-	-	-	30"	Class 200
30"	3122	31.22	32.42	793.0	823.5	-	-	-	-	-
36"	3786	37.86	39.16	961.6	994.7	-	-	-	-	-

*Verify pipe O.D. before selecting clamp size.

**CAUTION—O.D. of class 100 A-C pipe varies greatly. Measure pipe O.D. to assure proper clamp selection.

***Also fits PVC Plastic Pipe - ASTM D2241 SDR 17 and lower and ASTM D1785 schedule 80 and above.

773 SERIES SOLVENT WELD PVC JOINT REPAIR CLAMP



HYMAX 773 Series™ Joint Repair Clamp — for use on PE-160 PVC pipe solvent weld joints.

The 773 series clamp has a stepped gasket that fits over the solvent weld joint in PE-160 PVC pipe to stop leaks in the joint.

Catalog number	Nominal clamp/pipe size	Clamp length	
773-06-0238	2"	6"	12"
773-07-0289	2-1/2"	7-1/2"	12"
773-07-0350	3"	7-1/2"	12"
773-07-0450	4"	7-1/2"	12"
773-07-0663	6"	7-1/2"	12"
733-07-0863	8"	7-1/2"	12"

Extra bolts and nuts for 773 series Mueller Single Section Full Seal Repair Clamps

Clamp size	Bolt size	Bolt part number	Nut part number
2"-3-1/2"	1/2"x4-1/2"	521009	521010
4"-12" (standard nut)	5/8"x6"	521008	195236

NOTE: 4" and larger 773 Series Clamps are provided with one starter bolt/nut per side as standard.

Stainless steel bolts

For optional 304 stainless steel bolts, washers and nuts, add "S-" prefix to clamp catalog number.

Example: S-773-06-863.

Deep socket wrenches

Specially designed for use with Mueller Full-Seal Repair Clamps. Long ratchet handle has thumb-tip reverse. Deep sockets (3-1/4") have double hex (12 pt.) and 1/2" square drive.

Part number	Description
515204	15-3/4" with reversible ratchet handle
520344	7/8" socket for 2" and 3" clamps
515207	1-1/16" socket for 4" and larger clamps
519575	1/2"x3/4" adapter

200 SERIES CLAMP

Mini-Band Snap Clamp

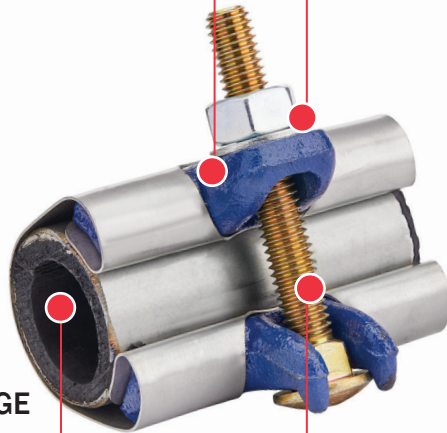
200 Series Clamps are used to repair holes, leaks, splits, circumferential breaks and cracks, as well as to correct pulled or leaking service connections. Stainless Steel clamps can be installed above or below ground and are available for all types of pipe, with styles especially suited for use in “hot” soils or corrosive atmospheres.

**DUCTILE IRON LUG DESIGN
WITH HEAVY BOLT SHOULDER**

304L STAINLESS STEEL BAND

**230 SERIES INCLUDES
360° GASKET CARTRIDGE**

**STANDARD ZINC PLATED BOLTS
(STAINLESS STEEL OPTIONAL)**



FEATURES

- Nitrile Waffle & Smooth Gasket
- Alloy Or Stainless Steel Bolts
- 360 Degree Or Regular Gasket
- Ductile Iron Lugs

BENEFITS

- Work with Water and Natural Gas
- Choice for non-corrosive and corrosive soil
- Options for various pipe condition issues
- Strong, shaped to form uniform clamping pressure on pipe



STEEL
COPPER



JOIN



REPAIR

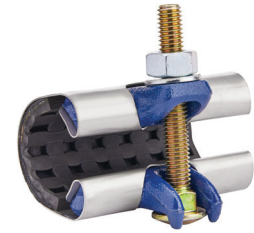


RESTRAIN



TAP

200 SERIES PIPE REPAIR CLAMPS



To specify the catalog number, use the charts to select the following information for the desired clamp:

1. Style number
2. Length
3. Size number

*Clamps available to fit specific size standard steel pipe within this nominal size range.

The catalog number for a 220 Style Clamp, 3" long for 1-1/2" steel pipe is 220-3-190

Clamp style number	Clamp length	Clamp size number
220	3	190

CLAMP STYLE NUMBER

Style number	Type of gasket	Gasket coverage	Bolts		Size available*
			Corrosion resistive plating	Stainless steel	
210	Smooth†	Full	X	-	1/2"-24"
211	Smooth†	Full	-	X	1/2"-24"
212	Gridded	Full	X	-	1/2"-24"
213	Gridded	Full	-	X	1/2"-24"
218	Smooth†	Regular	X	-	1-1/2"-24"
219	Smooth†	Regular	-	X	1-1/2"-24"
220	Gridded	Regular	X	-	3/4"-24"
221	Gridded	Regular	-	X	1-1/2"-24"

†Smooth gasket material is reinforced for 1-1/2" - 24" sizes

CLAMP LENGTH AND CLAMP STYLE NUMBER

Standard steel pipe size††	Clamp size number	Standard steel pipe O.D.	Number of clamp sections
1/2"	0084	0.840	1
3/4"	0105	1.050	
1"	0131	1.315	
1-1/4"	0166	1.660	
1-1/2"	0190	1.900	
2"	0237	2.375	
2-1/2"	0287	2.875	
3"	0350	3.500	
3-1/2"	0400	4.000	
4"	0450	4.500	
5"	0556	5.563	
6"	0662	6.625	
8"	0862	8.625	
10"	1075	10.750	
12"	1275	12.750	
14"	1400	14.000	
16"	1600	16.000	
18"	1800	18.000	
20"	2000	20.000	
24"	2400	24.000	

Compatible with 1 Clamp Sections	
Clamp lengths available	Number of bolts
3"	1
6"	2
9"	3
12"	4
18"	6

Compatible with 2 Clamp Sections	
Clamp lengths available	Number of bolts
3"	2
6"	4
9"	6
12"	8
15"	10
18"	12

* 2" & 3" O.D Clamps limited to 18" long.

†† Nominal Sizes

*IMPORTANT: HYMAX PIPE REPAIR CLAMPS have demonstrated their capability to seal against water pressures commonly encountered in distribution systems. Smaller diameter clamps of a given design can seal against higher pressures than larger ones. In addition, the pressure that a clamp can contain is effected by the torque applied to the bolts, the uniformity of bolt tightening (when there is more than one bolt), as well as the type and extent of pipe damage, surface condition of the pipe, environmental conditions, and installation workmanship

Metallic components of repair clamps, including stainless steel, corrode at widely variable rates depending upon many factors, such as installation outdoors or underground, composition of surrounding atmosphere/soil, presence of stray currents, moisture or chemicals, etc. Consequently, repair clamps must be assumed to have a finite service life. Consult with a corrosion professional to determine the life expectancy of this repair clamp taking into consideration all appropriate factors in the application. The piping system designer should determine the suitability of this type product on your particular system. Unforeseen failure of this product could result if these precautions are not taken. HYMAX. can provide additional material specification information on request by contacting Customer Service: 1.800.423.1323.

230 SERIES MINI BAND CLAMPS



Typical Mini-Band Clamp

HYMAX 230 Series Mini-Band Pipe Repair Clamps - for 1/2" through 2"

To specify the catalog number, use the charts to select the following information for the desired clamp:

1. Style number 230 (change "0" to "1" for stainless steel bolt option)
2. Length: "03" for 3" or "06" for 6"
3. Size number (from chart below)

Example:

The catalog number for a 230 Style clamp, 6" long for 1" rigid copper pipe, with the stainless steel bolt option is 231-06-0113

Clamp style number	Clamp length	Clamp size number
231	06	0113

Nominal pipe size	Clamp size number	Pipe O.D.	
		Standard steel, PVC	Type "K" copper
1/2"	0063	-	0.625
	0084	0.840	-
3/4"	0088	-	0.875
	0105	1.050	-
1"	0113	-	1.125
	0132	1.315	-
1-1/4"	0138	-	1.375
	0166	1.660	-
1-1/2"	0163	-	1.625
	0190	1.900	-
2"	0213	-	2.125
	0238	2.375	-

Clamp size	Bolt size	Part numbers	
		Corrosion resistive plating	Stainless steel
1/2"-1"	3/8" x 3"	584534	513363
1-1/4", 1-1/2"	3/8" x 3-1/2"	584535	513364
2"-5"	7/16" x 4"	584537	513366
6"-24"	7/16" x 5"	584538	513367

IMPORTANT: HYMAX PIPE REPAIR CLAMPS have demonstrated their capability to seal against water pressures commonly encountered in distribution systems. Smaller diameter clamps of a given design can seal against higher pressures than larger ones. In addition, the pressure that a clamp can contain is effected by the torque applied to the bolts, the uniformity of bolt tightening (when there is more than one bolt), as well as the type and extent of pipe damage, surface condition of the pipe, environmental conditions, and installation workmanship.

Metallic components of repair clamps, including stainless steel, corrode at widely variable rates depending upon many factors, such as installation outdoors or underground, composition of surrounding atmosphere/soil, presence of stray currents, moisture or chemicals, etc. Consequently, repair clamps must be assumed to have a finite service life. Consult with a corrosion professional to determine the life expectancy of this repair clamp taking into consideration all appropriate factors in the application. The piping system designer should determine the suitability of this type product on your particular system. Unforeseen failure of this product could result if these precautions are not taken. HYMAX can provide additional material specification information on request by contacting Customer Service: 1.800.423.1323.

OD CONTROLLED BRONZE SADDLE

Tapping Saddles For PVC Pipe

HYMAX OD Controlled Bronze Saddles are used to attached corporation stops to water mains so service lines can be installed to provide drinking water to single and multi-family homes.

SILICON BRONZE SCREWS

THICK TAPPING BOSS

AVAILABLE FOR C900
AND IRON PIPE SIZE PVC

HINGE DESIGN AVAILABLE

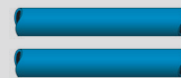


FEATURES

- Dedicated OD By Pipe Type
- Flanges On Both Sides
- Wide Straps
- Thick Tap Boss

BENEFITS

- Specially shaped to fit OD controlled plastic main
- Eliminates pipe distortion
- 4° per side minimizes risk of future pipe damage
- Provides sure grip while installing corporation stop



C900 PVC
IPS PVC



JOIN



REPAIR



RESTRAIN



TAP

H-13000 & S-13000 SERIES BRONZE SERVICE SADDLES FOR C900 PVC PIPE

SERVICE SADDLES FOR AWWA C900 PVC PIPE

- Outlet tapped with either AWWA taper (C.C.) or AWWA I.P. (F.I.P.T.) thread
- For use on cast iron O.D. PVC pipe made to ANSI/AWWA C900 standard
- 3/4" - 2" tap sizes
- NSF 61 Certified
- 200 psi (1380 kPa/13 barg) maximum working pressure



S-13000 Series
2-piece hinged
4"-8" mains;
3/4" to 1" tapping



H-13000 Series
2-piece
4"-12" mains;
3/4" to 2" tapping*



H-13000 Series
2-piece
10" & 12" mains;
3/4" to 2" tapping

Service Saddles For Cast Iron O.D. PVC Pipe

Nominal Main Size	Type Of Thread In Service Saddle Outlet										Design			
	AWWA Taper Thread (C.C.)					AWWA Iron Pipe Thread (F.I.P.T)								
	Design	Design	Tapping Size		Tapping Size		Design	Design	Tapping Size			Tapping Size		
AWWA Taper Thread (C.C.)	AWWA Iron Pipe Thread (F.I.P.T)	3/4"	1"	1-1/2"	2"	3/4"	1"	1-1/2"	2"	3/4"	1"	1-1/2"	2"	
4"	S-13440	X	X	-	-	Two-piece	S-13490	X	X	-	-	Two-piece		
4"	H-13440	X	X	X	X		H-13490	X	X	X	X			
6"	S-13441	X	X	-	-		S-13491	X	X	-	-			
6"	H-13441	X	X	X	X		H-13491	X	X	X	X			
8"	S-13442	X	X	-	-		S-13492	X	X	-	-			
8"	H-13442	X	X	X	X		H-13492	X	X	X	X			
10"	H-13443	X	X	X	X		H-13493	X	X	X	X			
12"	H-13444	X	X	X	X		H-13494	X	X	X	X			

These Machines May Be Used With The Service Saddles Illustrated On This Page

Machine	Service Saddle Tap Size			
	3/4"	1"	1-1/2"	2"
E-5™	X	X	X	X
D-5™	X	X	X	X
TRU-CUT™	X	X	-	-
MEGA-CUT™	X	X	X	X
PL-2™	X	X	-	-

* Note: 1 - 1/2" and 2" tapped saddles have four (4) bolts.

TO ORDER, SPECIFY QUANTITY, OUTLET TAPPING SIZE AND CATALOG NUMBER

H-13000 & S-13000 SERIES BRONZE SERVICE SADDLES FOR IPS PVC PIPE

SERVICE SADDLES FOR IRON PIPE SIZE PVC PIPE

- Outlet tapped with either AWWA taper (C.C.) or AWWA I.P. (F.I.P.T.) thread
- For use on IPS PVC pipe (O.D. controlled)
- 3/4" - 2" tap sizes
- NSF 61 Certified
- 200 psi (1380 kPa/13 barg) maximum working pressure



S-13000 Series
2-piece hinged
2" to 8" mains;
3/4" to 1" tapping



H-13000 Series
2-piece
4" to 8" mains;
3/4" to 2" tapping*



H-13000 Series
2-piece
10" & 12" mains;
3/4" to 1" tapping

Service Saddles For IPS PVC Pipe

Type Of Thread In Service Saddle Outlet

Nominal Main Size	AWWA Taper Thread (C.C.)					Design	AWWA Iron Pipe Thread (F.I.P.T)					Design
	Catalog Number	Tapping Size					Catalog Number	Tapping Size				
		3/4"	1"	1-1/2"	2"		3/4"	1"	1-1/2"	2"		
2"	S-13420	X	X	-	-	Two piece	S-13470	X	X	-	-	Two piece
2"	H-13420	X	X	-	-		H-13470	X	X	-	-	
2-1/2"	S-13422	X	X	-	-		S-13472	X	X	-	-	
2-1/2"	H-13422	X	X	-	-		H-13472	X	X	-	-	
3"	S-13425	X	X	-	-		S-13475	X	X	-	-	
3"	H-13425	X	X	-	-		H-13475	X	X	-	-	
4"	S-13428	X	X	-	-		S-13478	X	X	-	-	
4"	H-13428	X	X	X	X		H-13478	X	X	X	X	
6"	S-13431	X	X	-	-		S-13481	X	X	-	-	
6"	H-13431	X	X	X	X		H-13481	X	X	X	X	
8"	S-13433	X	X	-	-	S-13483	X	X	-	-		
8"	H-13433	X	X	X	X	H-13483	X	X	X	X		
10"	H-13434	X	X	-	-	H-13484	X	X	-	-	Three piece	
12"	H-13435	X	X	-	-	H-13485	X	X	-	-		

These Machines May Be Used With The Service Saddles Illustrated On This Page

Machine	Service Saddle Tap Size			
	3/4"	1"	1-1/2"	2"
E-5™	X	X	X	X
D-5™	X	X	X	X
TRU-CUT™	X	X	-	-
MEGA-CUT™	X	X	X	X
PL-2™	X	X	-	-

* Note: 1 - 1/2" and 2" tapped saddles have four (4) bolts.

TO ORDER, SPECIFY QUANTITY, OUTLET TAPPING SIZE AND CATALOG NUMBER

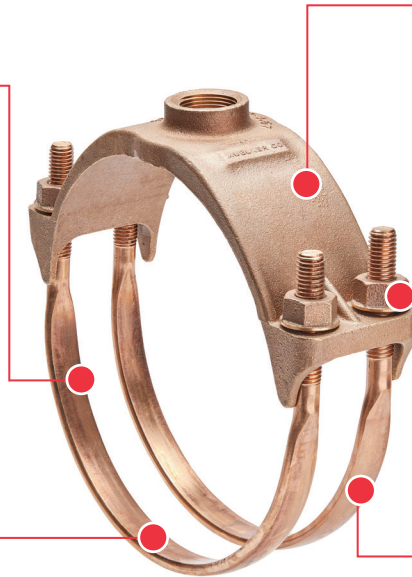
SINGLE AND DOUBLE STRAP BRONZE BODY SADDLE

NSF 61 Certified Tapping Saddle

HYMAX Single and Double Strap Bronze Body Saddles are used to attached corporation stops to water mains so service lines can be installed to provide drinking water to single and multi-family homes.

SILICON BRONZE,
STAINLESS STEEL STRAPS
OR BRONZE BODY STYLE

THICK TAPPING BOSS



CLOSED BOLT LUGS FOR
EASY INSTALLATION

ALLOY OR
STAINLESS STEEL STRAPS
FOR DUCTILE BODY STYLE

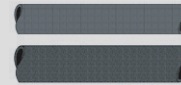
SINGLE OR DOUBLE STRAP
VERSIONS ARE AVAILABLE

FEATURES

- Bronze Body
- Various Strap Material
- Outside Diameter (OD) Range
- Thick Tapping Boss

BENEFITS

- Will not corrode
- Available with bronze or Stainless Steel straps
- Fits various ODs at each pipe size
- Provides sure grip while installing corporation stop



DUCTILE IRON
CAST IRON



JOIN



REPAIR



RESTRAIN



TAP

BR1B SERIES BRONZE SERVICE SADDLES - SINGLE STRAP



SERVICE SADDLES FOR USE ON CAST IRON AND DUCTILE IRON PIPE

- Outlet tapped with either AWWA taper (C.C.) or AWWA I.P. thread (F.I.P.T.)
- For use on cast iron or ductile iron pipe
- 200 psig (1380 kPa/13.80) maximum working pressure
- Available in single strap designs
- Brass body
- Flattened silicon bronze straps
- Roll strap threads
- O-ring sealed outlet
- 1/2" thru 1" tap sizes
- Meets all applicable parts of ANSI/AWWA C800
- NSF 61 Certified

Service Saddles With Bronze Single Strap

Pipe O.D. Range*		A-C	Kind and Size of Pipe		Base Catalog Number	Bronze Single Straps			
Inch	mm		Cast or Ductile Iron	Tap*** Thread		Size of Tapping (add to "Base" to complete catalog number)			
					1/2"	5/8"	3/4"	1"	
4.74-5.32	120.4-135.1	**	4"	CC or IP	BR1B0474	050	062	075	100
6.84-7.45	173.7-189.2		6"	CC or IP	BR1B0684	050	062	075	100
8.99-9.67	228.3-245.6		8"	CC or IP	BR1B0899	050	062	075	100
11.04-12.12	280.4-307.8		10"	CC or IP	BR1B1104	050	062	075	100
13.14-14.58	333.8-370.3		12"	CC or IP	BR1B1314	050	062	075	100

*A-C pipe, classes 150-200 per ASTM C295 and AWWA C400 – actual O.D. of pipe being used must fall within the pipe O.D. range listed in the preceding charts. Centrifugally cast pipe, classes 50-250 per ANSI/AWWA C102/A21.2; ANSI/AWWA C106/A21.6; ANSI/AWWA C108/A21.8, and Federal specification WW-P-421. Ductile iron pipe, classes 50-56 per ANSI/AWWA C151/A21.51; Cast iron O.D. PVC plastic pipe per AWWA C900.

** The outside diameter of A-C pipe varies from manufacturer to manufacturer, to make certain you select the proper clamp: 1) Determine the O.D. of the pipe at the point of saddle installation; 2) From the pipe O.D. range column of the above chart, choose a saddle that has a pipe O.D. range that includes the determined pipe diameter.

***CC=AWWA Taper; IP=AWWA IP thread (F.I.P.T)

These Machines May Be Used With The Service Saddles Illustrated On This Page

Machine	Service saddle tap size			
	1/2"	5/8"	3/4"	1"
E-5™	X	X	X	X
D-5™	-	-	X	X
TRU-CUT™	-	-	X	X
MEGA-CUT™	X	X	X	X
PL-2	-	-	X	X

TO ORDER, SPECIFY QUANTITY, OUTLET TAPPING SIZE AND CATALOG NUMBER

BR1S SERIES BRONZE SERVICE SADDLES - SINGLE STRAP



SERVICE SADDLES FOR USE ON A-C, CAST IRON, DUCTILE IRON, AND AWWA C900 PVC PLASTIC PIPE

- Outlet tapped with either AWWA taper (C.C.) or AWWA I.P. thread (F.I.P.T.)
- For use on A-C pipe, cast iron or ductile iron pipe and C900 PVC pipe
- 200 psig (1380 kPa/13.80 bar) maximum working pressure
- Available in single strap designs
- Brass body
- 304L Stainless Steel straps
- Roll strap threads
- O-ring sealed outlet
- 1/2" thru 1" tap sizes
- Meets all applicable parts of ANSI/AWWA C800
- NSF 61 Certified

Service Saddles With Stainless Steel Single Strap

Pipe O.D. Range*		A-C	Kind and Size of Pipe		Base Catalog Number	Stainless Steel Single Straps			
Inch	mm		Cast or Ductile Iron, C900 PVC	Tap*** Thread		Size of Tapping (add to "Base" to complete catalog number)			
						1/2"	5/8"	3/4"	1"
4.74-5.32	120.4-135.1	**	4"	CC or IP	BR1S0474	050	062	075	100
6.84-7.45	173.7-189.2		6"	CC or IP	BR1S0684	050	062	075	100
8.99-9.67	228.3-245.6		8"	CC or IP	BR1S0899	050	062	075	100
11.04-12.12	280.4-307.8		10"	CC or IP	BR1S1104	050	062	075	100
13.14-14.58	333.8-370.3		12"	CC or IP	BR1S1314	050	062	075	100

*A-C pipe, classes 150-200 per ASTM C295 and AWWA C400 – actual O.D. of pipe being used must fall within the pipe O.D. range listed in the preceding charts. Centrifugally cast pipe, classes 50-250 per ANSI/AWWA C102/A21.2; ANSI/AWWA C106/A21.6; ANSI/AWWA C108/A21.8, and Federal specification WW-P-421. Ductile iron pipe, classes 50-56 per ANSI/AWWA C151/A21.51; Cast iron O.D. PVC plastic pipe per AWWA C900.

** The outside diameter of A-C pipe varies from manufacturer to manufacturer., to make certain you select the proper clamp: 1) Determine the O.D. of the pipe at the point of saddle installation; 2) From the pipe O.D. range column of the above chart, choose a saddle that has a pipe O.D. range that includes the determined pipe diameter.

***CC=AWWA Taper; IP=AWWA IP thread (F.I.P.T)

These Machines May Be Used With The Service Saddles Illustrated On This Page

Machine	Service Saddle Tap Size			
	1/2"	5/8"	3/4"	1"
E-5™	X	X	X	X
D-5™	-	-	X	X
TRU-CUT™	-	-	X	X
MEGA-CUT™	X	X	X	X
PL-2™	-	-	X	X

TO ORDER, SPECIFY QUANTITY, OUTLET TAPPING SIZE AND CATALOG NUMBER

! WARNING: Use on A-C pipe, which contains a known carcinogen, requires appropriate protective equipment and procedures be employed.

BR2B SERIES BRONZE SERVICE SADDLES - DOUBLE STRAP



SERVICE SADDLES FOR USE ON CAST IRON AND DUCTILE IRON PIPE

- Outlet tapped with either AWWA taper (C.C.) or AWWA I.P. thread (F.I.P.T.)
- For use on cast iron and ductile iron OD pipe.
- 200 psig (1380 kPa/14 barg) maximum working pressure
- Available in double strap designs
- Brass body
- Flattened silicon bronze straps
- Rolled strap threads
- O-ring sealed outlet
- 3/4" thru 2" tap sizes (1/2" and 5/8" some styles)
- Meets all applicable parts of ANSI/AWWA C800
- NSF 61 Certified

Service Saddles With Bronze Double Straps

Pipe O.D. Range*		Kind and Size of Pipe			Bronze Double Straps							
Inch	mm	A-C	Cast or Ductile Iron	Tap*** Thread	Base Catalog Number	Size of Tapping (add to "Base" to complete catalog number)						
						1/2"	5/8"	3/4"	1"	1-1/4"	1-1/2"	2"
4.74-5.32	120.4-135.1	**	4"	CC or IP	BR2B0474	050	062	075	100	-	-	-
4.74-5.10	120.4-129.5		4"	CC or IP	BR2B0474	-	-	-	-	125	150	200
5.10-5.40	129.5-137.1		4"	CC or IP	BR2B0510	-	-	-	-	125	150	200
6.84-7.45	173.7-189.2		6"	CC or IP	BR2B0684	050	062	075	100	125	150	200
8.99-9.67	228.4-245.6		8"	CC or IP	BR2B0899	050	062	075	100	125	150	200
11.04-12.12	280.4-307.8		10"	CC or IP	BR2B1104	050	062	075	100	125	150	200
13.14-14.58	333.8-370.3		12"	CC or IP	BR2B1314	050	062	075	100	125	150	200
15.22-16.88	386.6-428.7		14"	CC or IP	BR2B1522	-	-	075	100	-	150	200
17.32-19.19	439.9-487.4		16"	CC or IP	BR2B1732	-	-	075	100	-	150	200
18.00-19.50	457.2-495.3		18"	CC or IP	BR2B1800	-	-	075	100	125	150	200
20.00-21.60	508.0-548.6		20"	CC or IP	BR2B2000	-	-	075	100	125	150	200
24.00-25.80	609.6-655.3		24"	CC or IP	BR2B2400	-	-	075	100	125	150	200

*A-C pipe, classes 150-200 per ASTM C295 and AWWA C400 – actual O.D. of pipe being used must fall within the pipe O.D. range listed in the preceding charts. Centrifugally cast pipe, classes 50-250 per ANSI/AWWA C102/A21.2; ANSI/AWWA C106/A21.6; ANSI/AWWA C108/A21.8, and Federal specification WW-P-421. Ductile iron pipe, classes 50-56 per ANSI/AWWA C151/A21.51; Cast iron O.D. PVC plastic pipe per AWWA C900.

** The outside diameter of A-C pipe varies from manufacturer to manufacturer., to make certain you select the proper clamp: 1) Determine the O.D. of the pipe at the point of saddle installation; 2) From the pipe O.D. range column of the above chart, choose a saddle that has a pipe O.D. range that includes the determined pipe diameter.

***CC=AWWA Taper; IP=AWWA IP thread (F.I.P.T)

These Machines May Be Used With The Service Saddles Illustrated On This Page

Machine	Service Saddle Tap Size						
	1/2"	5/8"	3/4"	1"	1-1/4"	1-1/2"	2"
E-5™	X	X	X	X	X	X	X
D-5™	-	-	X	X	X	X	X
TRU-CUT™	-	-	X	X	-	-	-
MEGA-CUT™	X	X	X	X	X	X	X
PL-2™	-	-	X	X	-	-	-

TO ORDER, SPECIFY QUANTITY, OUTLET TAPPING SIZE AND CATALOG NUMBER

BR2S & BR2W SERIES BRONZE SERVICE SADDLES - DOUBLE STRAP



SERVICE SADDLES FOR USE ON A-C, CAST IRON, DUCTILE IRON, AND AWWA C900 PVC PLASTIC PIPE

- Outlet tapped with either AWWA taper (C.C.) or AWWA I.P. thread (F.I.P.T.)
- For use on A-C pipe, cast iron or ductile iron pipe and cast iron O.D. PVC pipe
- 200 psig (1380 kPa/14 barg) maximum working pressure
- Available in double strap designs
- Brass body
- 304L Stainless Steel straps
- Rolled strap threads
- O-ring sealed outlet
- 3/4" thru 2" tap sizes (1/2" and 5/8" some styles)
- Meets all applicable parts of ANSI/AWWA C800
- NSF 61 Certified

Service Saddles With Stainless Steel Double Straps

Pipe O.D. Range*		Kind and Size of Pipe	Stainless Steel Double Straps									
Inch	mm		A-C	Cast or Ductile Iron, C900 PVC	Tap*** Thread	Base Catalog Number	Size of Tapping (add to "Base" to complete catalog number)					
						1/2"	5/8"	3/4"	1"	1-1/4"	1-1/2"	2"
4.74-5.32	120.4-135.1	**	4"	CC or IP	BR2S0474	050	062	075	100	-	-	-
4.74-5.10	120.4-129.5		4"	CC or IP	BR2S0474	-	-	-	-	125	150	200
5.10-5.40	129.5-137.1		4"	CC or IP	BR2S0510	-	-	-	-	125	150	200
6.84-7.45	173.7-189.2		6"	CC or IP	BR2S0684	050	062	075	100	125	150	200
8.99-9.67	228.4-245.6		8"	CC or IP	BR2S0899	050	062	075	100	125	150	200
11.04-12.12	280.4-307.8		10"	CC or IP	BR2S1104	050	062	075	100	125	150	200
13.14-14.58	333.8-370.3		12"	CC or IP	BR2S1314	050	062	075	100	125	150	200
15.22-16.88	386.6-428.7		14"	CC or IP	BR2S1522	-	-	075	100	-	150	200
17.32-19.19	439.9-487.4		16"	CC or IP	BR2S1732	-	-	075	100	-	150	200
18.00-19.50	457.2-495.3		18" X	CC or IP	BR2W1800	-	-	075	100	125	150	200
20.00-21.60	508.0-548.6		20" X	CC or IP	BR2W2000	-	-	075	100	125	150	200
24.00-25.80	609.6-655.3		24" X	CC or IP	BR2W2400	-	-	075	100	125	150	200

*A-C pipe, classes 150-200 per ASTM C295 and AWWA C400 – actual O.D. of pipe being used must fall within the pipe O.D. range listed in the preceding charts. Centrifugally cast pipe, classes 50-250 per ANSI/AWWA C102/A21.2; ANSI/AWWA C106/A21.6; ANSI/AWWA C108/A21.8, and Federal specification WW-P-421. Ductile iron pipe, classes 50-56 per ANSI/AWWA C151/A21.51; Cast iron O.D. PVC plastic pipe per AWWA C900.

** The outside diameter of A-C pipe varies from manufacturer to manufacturer., to make certain you select the proper clamp: 1) Determine the O.D. of the pipe at the point of saddle installation; 2) From the pipe O.D. range column of the above chart, choose a saddle that has a pipe O.D. range that includes the determined pipe diameter.

***CC=AWWA Taper; IP=AWWA IP thread (F.I.P.T)

X – 18", 20" and 24" Saddles are provided with the "W" Double Wide Strap

These Machines May Be Used With The Service Saddles Illustrated On This Page

Machine	Service Saddle Tap Size						
	1/2"	5/8"	3/4"	1"	1-1/4"	1-1/2"	2"
E-5™	X	X	X	X	X	X	X
D-5™	-	-	X	X	X	X	X
TRU-CUT™	-	-	X	X	-	-	-
MEGA-CUT™	X	X	X	X	X	X	X
PL-2™	-	-	X	X	-	-	-

TO ORDER, SPECIFY QUANTITY, OUTLET TAPPING SIZE AND CATALOG NUMBER

SINGLE AND DOUBLE STRAP DUCTILE BODY SADDLE

NSF 61 Certified Tapping Saddle

HYMAX Single and Double Strap Ductile Body Saddles are used to attached corporation stops to water mains so service lines can be installed to provide drinking water to single and multi-family homes.

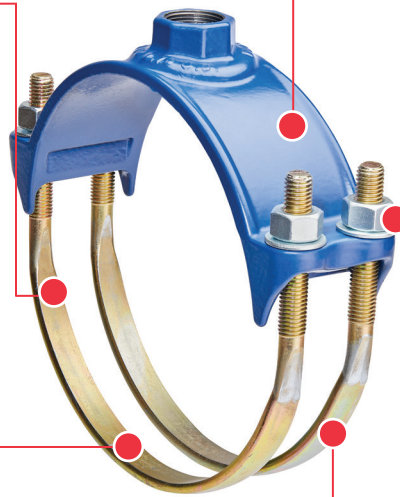
SILICON BRONZE,
STAINLESS STEEL STRAPS
OR BRONZE BODY STYLE

THICK TAPPING BOSS

ALLOY OR
STAINLESS STEEL STRAPS
FOR DUCTILE BODY STYLE

CLOSED BOLT LUGS FOR
EASY INSTALLATION

SINGLE OR DOUBLE STRAP
VERSIONS ARE AVAILABLE

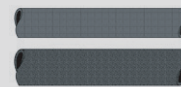


FEATURES

- Ductile Body
- Outside Diameter (OD) Range
- Nylon Coating
- Various Strap Material

BENEFITS

- Strong resilient body with high working pressure
- Fits various ODs at each pipe size
- Resists long term corrosion
- Available with Stainless Steel or alloy straps



DUCTILE IRON
CAST IRON



JOIN



REPAIR



RESTRAIN



TAP

DR1S SERIES DUCTILE IRON SERVICE SADDLES - SINGLE STRAP



NYLON DUCTILE IRON SERVICE SADDLES FOR USE ON CAST IRON, DUCTILE IRON, AWWA C900 PVC PLASTIC, STEEL AND A-C PIPE

- Outlet tapped with AWWA taper (C.C.) or AWWA I.P. thread (F.I.P.T.)
- Single strap design rated at 250 psig (1725 kPa/17.25 bar) maximum working pressure
- ASTM A536 ductile iron body
- Body is Nylon 11 (10 -12 mil)
- 304L Stainless Steel strap
- Rolled strap threads
- Nitrile O-ring gasket
- 1/2" thru 2" tap sizes
- Meets all applicable parts of ANSI/AWWA C800
- NSF 61 Certified

Service Saddles With Stainless Steel Single Strap

Pipe O.D. Range*		A-C	Kind and Size of Pipe			Base Catalog Number	Stainless Steel Strap					
Inch	mm		Std. Steel, IPS PVC	Cast Iron, Ductile Iron C900 PVC	Tap*** Thread		Size of Tapping (add to "Base" to complete catalog number)					
							1/2"	3/4"	1"	1-1/4"	1-1/2"	2"
2.35-2.50	59.7-63.5	**	2"	2"*	CC or IP	DR1S0235	050	075	100	-	-	-
2.85-2.91	72.4-73.9		2-1/2"	2-1/2"*	CC or IP	DR1S0285	050	075	100	-	-	-
3.56-4.00	90.5-101.6		3-1/2"	3"	CC or IP	DR1S0356	050	075	100	-	-	-
4.47-5.32	113.5-135.1		4"	4"	CC or IP	DR1S0447	050	075	100	125	150	200
6.59-7.37	167.4-187.2		6"	6"	CC or IP	DR1S0659	050	075	100	125	150	200
8.54-9.79	216.9-248.7		8"	8"	CC or IP	DR1S0854	050	075	100	125	150	200
10.64-12.12	270.3-307.8		10"	10"	CC or IP	DR1S1064	050	075	100	-	-	-
12.62-14.38	320.5-365.3		12"	12"	CC or IP	DR1S1262	050	075	100	-	-	-

* Important—carefully check the range of the saddle with the O.D. of the pipe being used.

** The outside diameter of A-C pipe varies from manufacturer to manufacturer, to make certain you select the proper clamp:

1) Determine the O.D. of the pipe at the point of saddle installation;

2) From the pipe O.D. range column of the above chart, choose a saddle that has a pipe O.D. range that includes the determined pipe diameter.

***CC=AWWA Taper; IP=AWWA IP thread (F.I.P.T)

These Machines May Be Used With The Service Saddles Illustrated On This Page

Machine	Service Saddle Tap Size					
	1/2"	3/4"	1"	1-1/4"	1-1/2"	2"
E-5™	X	X	X	X	X	X
D-5™	-	X	X	X	X	X
TRU-CUT™	-	X	X	-	-	-
MEGA-CUT™	X	X	X	X	X	X
PL-2™	-	X	X	-	-	-

TO ORDER, SPECIFY QUANTITY, OUTLET TAPPING SIZE AND CATALOG NUMBER

! WARNING: Use on A-C pipe, which contains a known carcinogen, requires appropriate protective equipment and procedures be employed.

DR1A SERIES DUCTILE IRON SERVICE SADDLES - SINGLE STRAP



NYLON DUCTILE IRON SERVICE SADDLES FOR USE ON CAST IRON, DUCTILE IRON, AND STEEL PIPE

- Outlet tapped with either AWWA taper (C.C.) or AWWA I.P. thread (F.I.P.T.)
- Single strap design rated at 250 psig (1725 kPa/17.25 bar) maximum working pressure
- ASTM A536 ductile iron body
- Body is Nylon 11 (10 -12 mil)
- Forged alloy steel strap
- Rolled strap threads
- Nitrile O-ring gasket
- 1/2" thru 2" tap sizes
- Meets all applicable parts of ANSI/AWWA C800
- NSF 61 Certified

Service Saddles With Single Alloy Strap

Pipe O.D. Range*		A-C	Kind and Size of Pipe			Base Catalog Number	Stainless Steel Strap Size of Tapping (add to "Base" to complete catalog number)					
Inch	mm		Std. Steel	Cast Iron, Ductile Iron	Tap*** Thread		1/2"	3/4"	1"	1-1/4"	1-1/2"	2"
2.35-2.50	59.7-63.5	**	2"	2"*	CC or IP	DR1A0235	050	075	100	-	-	-
2.85-2.91	72.4-73.9		2-1/2"	2-1/2"*	CC or IP	DR1A0285	050	075	100	-	-	-
3.56-4.00	91.0-101.0		3-1/2"	3"	CC or IP	DR1A0356	050	075	100	-	-	-
4.47-5.32	113.5-135.1		4"	4"	CC or IP	DR1A0447	050	075	100	125	150	200
6.59-7.37	167.4-187.2		6"	6"	CC or IP	DR1A0659	050	075	100	125	150	200
8.54-9.79	216.9-248.7		8"	8"	CC or IP	DR1A0854	050	075	100	125	150	200
10.64-12.12	270.3-307.8		10"	10"	CC or IP	DR1A1064	050	075	100	-	-	-
12.62-14.38	320.5-365.3		12"	12"	CC or IP	DR1A1262	050	075	100	-	-	-

* Important - carefully check the range of the saddle with the O.D. of the pipe being used.

** The outside diameter of A-C pipe varies from manufacturer to manufacturer, to make certain you select the proper clamp:

1) Determine the O.D. of the pipe at the point of saddle installation;


2) From the pipe O.D. range column of the above chart, choose a saddle that has a pipe O.D. range that includes the determined pipe diameter

***CC=AWWA Taper; IP=AWWA IP thread (F.I.P.T)

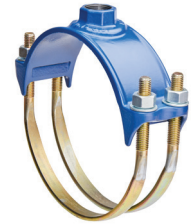
These Machines May Be Used With The Service Saddles Illustrated On This Page

Machine	Service Saddle Tap Size					
	1/2"	3/4"	1"	1-1/4"	1-1/2"	2"
E-5™	X	X	X	X	X	X
D-5™	-	X	X	X	X	X
TRU-CUT™	-	X	X	-	-	-
MEGA-CUT™	X	X	X	X	X	X
PL-2™	-	X	X	-	-	-

TO ORDER, SPECIFY QUANTITY, OUTLET TAPPING SIZE AND CATALOG NUMBER

 **WARNING:** Use on A-C pipe, which contains a known carcinogen, requires appropriate protective equipment and procedures be employed.

DR2A SERIES DUCTILE IRON SERVICE SADDLES - DOUBLE STRAP



NYLON DUCTILE IRON SERVICE SADDLES FOR USE ON CAST IRON, DUCTILE IRON, AND STEEL PIPE

- Outlet tapped with AWWA taper (C.C.) or AWWA I.P. thread (F.I.P.T.)
- Double strap design rated at 500 psig (3450 kPa/34.50 bar) maximum working pressure
- ASTM A536 ductile iron body
- Body is Nylon 11 (10 -12 mil)
- Forged alloy steel strap
- Rolled strap threads
- Nitrile O-ring gasket
- 1/2" thru 2" tap sizes
- Meets all applicable parts of ANSI/AWWA C800
- NSF 61 Certified

Service Saddles With Double Alloy Strap Strap

Pipe O.D. Range*		Kind and Size of Pipe				Base Catalog Number	Double Steel Alloy Strap Size of Tapping (add to "Base" to complete catalog number)					
Inch	mm	A-C	Std. Steel	Cast Iron, Ductile Iron	Tap*** Thread		1/2"	3/4"	1"	1-1/4"	1-1/2"	2"
2.35-2.50	59.7-63.5	**	2"	2"*	CC or IP	DR2A0235	050	075	100	-	-	-
3.56-4.00	91.0-101.0		3-1/2"	3"	CC or IP	DR2A0356	050	075	100	-	-	-
4.47-5.32	113.5-135.1		4"	4"	CC or IP	DR2A0447	050	075	100	125	150	200
6.59-7.37	167.4-187.2		6"	6"	CC or IP	DR2A0659	050	075	100	125	150	200
8.54-9.79	216.9-248.7		8"	8"	CC or IP	DR2A0854	050	075	100	125	150	200
10.64-12.12	270.3-307.8		10"	10"	CC or IP	DR2A1064	050	075	100	125	150	200
12.62-14.38	320.5-365.3		12"	12"	CC or IP	DR2A1262	050	075	100	125	150	200
17.40-18.80	442.0-477.5		-	16"	CC or IP	DR2A1740	-	07	100	125	150	200
18.00-19.50	457.2-495.3		-	18"	CC or IP	DR2A1800	-	075	100	125	150	200
20.00-21.60	508.0-548.6		-	20"	CC or IP	DR2A2000	-	075	100	125	150	200
24.00-25.80	609.0-655.3		-	24"	CC or IP	DR2A2400	-	075	100	125	150	200

* Important—carefully check the range of the saddle with the O.D. of the pipe being used.

** The outside diameter of A-C pipe varies from manufacturer to manufacturer. To make certain you select the proper clamp:

1) Determine the O.D. of the pipe at the point of saddle installation;


2) From the pipe O.D. range column of the above chart, choose a saddle that has a pipe O.D. range that includes the determined pipe diameter.

***CC=AWWA Taper; IP=AWWA IP thread (F.I.P.T)

These Machines May Be Used With The Service Saddles Illustrated On This Page

Machine	Service Saddle Tap Size					
	1/2"	3/4"	1"	1-1/4"	1-1/2"	2"
E-5™	X	X	X	X	X	X
D-5™	-	X	X	X	X	X
TRU-CUT™	-	X	X	-	-	-
MEGA-CUT™	X	X	X	X	X	X
PL-2™	-	X	X	-	-	-

TO ORDER, SPECIFY QUANTITY, OUTLET TAPPING SIZE AND CATALOG NUMBER

 WARNING: Use on A-C pipe, which contains a known carcinogen, requires appropriate protective equipment and procedures be employed.

DR2S SERIES DUCTILE IRON SERVICE SADDLES - DOUBLE STRAP



NYLON DUCTILE IRON SERVICE SADDLES FOR USE ON CAST IRON, DUCTILE IRON, AWWA C900 PVC PLASTIC, STEEL AND A-C PIPE

- Outlet tapped with AWWA taper (C.C.) or AWWA I.P. thread (F.I.P.T.)
- Double strap design rated at 500 psig (3450 kPa/34.50 bar) maximum working pressure
- ASTM A536 ductile iron body
- Body is Nylon 11 (10 -12 mil)
- 304L Stainless Steel strap
- Rolled strap threads
- Nitrile O-ring gasket
- 1/2" thru 2" tap sizes
- Meets all applicable parts of ANSI/AWWA C800
- NSF 61 Certified

Service Saddles With Double Stainless Steel Strap

Pipe O.D. Range*		A-C	Kind and Size of Pipe			Base Catalog Number	Double Steel Alloy Strap Size of Tapping (add to "Base" to complete catalog number)					
Inch	mm		Std. Steel IPS PVC	Cast Iron, Ductile Iron PVC C900	Tap*** Thread		1/2"	3/4"	1"	1-1/4"	1-1/2"	2"
2.35-2.50	59.7-63.5	**	2"	2"*	CC or IP	DR 2 S 0235	050	075	100	-	-	-
3.56-4.00	91.0-101.0		3-1/2"	3"	CC or IP	DR 2 S 0356	050	075	100	-	-	-
4.47-5.32	113.5-135.1		4"	4"	CC or IP	DR 2 S 0447	050	075	100	125	150	200
6.59-7.37	167.4-187.4		6"	6"	CC or IP	DR 2 S 0659	050	075	100	125	150	200
8.54-9.79	216.9-248.7		8"	8"	CC or IP	DR 2 S 0854	050	075	100	125	150	200
10.64-12.12	270.3-307.8		10"	10"	CC or IP	DR 2 S 1064	050	075	100	125	150	200
12.62-14.38	320.5-365.3		12"	12"	CC or IP	DR 2 S 1262	050	075	100	125	150	200
17.40-18.80	442.0-477.5		-	16"	CC or IP	DR 2 S 1740	-	075	100	125	150	200
18.00-19.50	457.2-495.3		-	18" X	CC or IP	DR 2 W 1800	050	075	100	125	150	200
20.00-21.60	508.0-548.6		-	20" X	CC or IP	DR 2 W 2000	050	075	100	125	150	200
24.00-25.80	609-655.3	-	24" X	CC or IP	DR 2 W 2400	050	075	100	125	150	200	

* Important – carefully check the range of the saddle with the O.D. of the pipe being used.

** The outside diameter of A-C pipe varies from manufacturer to manufacturer. To make certain you select the proper clamp:

- 1) Determine the O.D. of the pipe at the point of saddle installation;
- 2) From the pipe O.D. range column of the above chart, choose a saddle that has a pipe O.D. range that includes the determined pipe diameter.
- 3) Ductile Iron Double Stainless Strap Saddles can be specifically sized for IPS PVC or C900.

***CC=AWWA Taper; IP=AWWA IP thread (F.I.P.T)

X – 18", 20" and 24" Saddles are provided with the "W" Double Wide Strap

These Machines May Be Used With The Service Saddles Illustrated On This Page

Machine	Service Saddle Tap Size					
	1/2"	3/4"	1"	1-1/4"	1-1/2"	2"
E-5™	X	X	X	X	X	X
D-5™	-	X	X	X	X	X
TRU-CUT™	-	X	X	-	-	-
MEGA-CUT™	X	X	X	X	X	X
PL-2™	-	X	X	-	-	-

TO ORDER, SPECIFY QUANTITY, OUTLET TAPPING SIZE AND CATALOG NUMBER

WARNING: Use on A-C pipe, which contains a known carcinogen, requires appropriate protective equipment and procedures be employed.

TAPPING SLEEVES

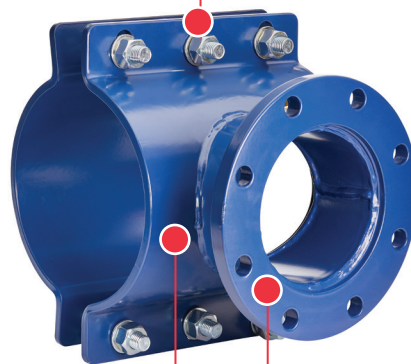
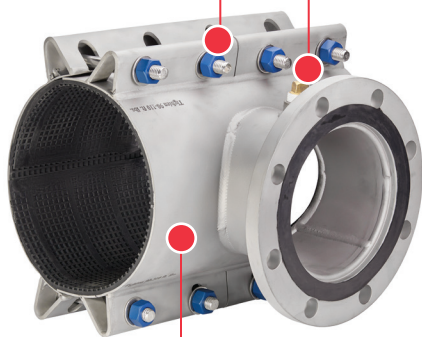
Fabricated Stainless Steel With Drop In Bolts

HYMAX Tapping Sleeves are used to attach tapping valves or gate valves to water mains so water mains can be extended for future develop, to install new fire hydrants on existing lines, increase fire protection for buildings, etc.

304 STAINLESS STEEL BOLTS ON H304 MODEL

ZINC PLATED STEEL BOLTS ON H306 MODEL

3/4" INCH TEST PORT IN NECK OF SLEEVE



304 STAINLESS STEEL OR A306 STEEL BODIES AVAILABLE

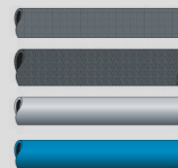
STANDARD TAPPING FLANGE OR MECHANICAL JOINT (MJ) FLANGE AVAILABLE

FEATURES

- Outside Diameter (OD) Range
- V-Outlet Seal Gasket
- Stainless Steel Body And Bolts
- Outlet Flange

BENEFITS

- Fits various ODs at each pipe size
- Pressure energized for higher working pressure
- Resists corrosion in aggressive soils
- Available with traditional tapping flange or MJ outlet



DUCTILE IRON
CAST IRON
STEEL
PVC



H-304 STAINLESS STEEL TAPPING SLEEVE - 4" - 24"

- Catalog number-- H-304 Stainless Steel Tapping Sleeve
- Sizes- 4"*-24" main and outlet (see chart below for available size combinations)
- Outlet choices: flange or integral MJ outlet
- Outlet flange material options: 304L Stainless Steel, carbon steel, or ductile iron outlet flange which meets or exceeds all applicable requirements of ANSI B16.1, class 125 and B16.42 class 150 and in accordance with MSS-SP60
- Integral MJ flange is 304L Stainless Steel
- Removable Bolts at Nuts 304L Stainless Steel
- Certified to ANSI/NSF 61
- 3/4" NPT brass test plug (Stainless Steel optional)
- 4"-12" sizes--250 psig (1725 kPa/17 barg) maximum working pressure
- 14"-24" sizes--200 psig (1375 kPa/14 barg) maximum working pressure



H-304 Series with Flange



H-304 Series MJ

How to determine a HYMAX Tapping Sleeve Part Number

Select the appropriate numbers from the pipe information chart that follows. Example: For 6"x6" with 7.30-7.50 O.D. Range and Stainless Steel flange. Resulting Part No. **0606H304SS0750**

*3" outlet flange only available in Stainless Steel

** H-304 is constant for all HYMAX Stainless Steel Tapping Sleeves listed here

** SS = Stainless Steel flange, CS = carbon steel flange, DI = ductile iron flange, MJ=integral mechanical joint outlet.*

Main size	Outlet size	Model Number	Flange Material	Maximum O.D.
06	06	H-304*	SS**	0750

Tapping Sleeve Pipe Information

Size of main	Size of outlet flange	Available sleeve O.D. ranges		Class and type of pipe
4"	3", 4"	4.50-4.90	114.30-124.46	Iron pipe size PVC; C900 Cast Iron O.D. PVC; Cast iron 100-250 A, B, C, D; Ductile Iron; AC 100
		4.80-5.00	121.92-127.00	
6"	3", 4", 6"	6.59-6.99	167.39-177.55	Iron pipe size PVC; C900 Cast Iron O.D. PVC; Cast iron 100-250 A, B, C, D; Ductile Iron; AC 100, 150
		6.89-7.30	175.00-185.42	
		7.10-7.50	180.34-190.50	
		7.40-7.80	187.96-198.12	
8"	3", 4", 6", 8"	7.90-8.30	200.66-210.82	Iron pipe size PVC; C900 Cast Iron O.D. PVC; Cast Iron 100-250 A, B, C, D; Ductile Iron; AC 100, 150, 200
		8.62-9.06	218.95-230.12	
		9.04-9.45	229.62-240.03	
		9.20-9.60	233.68-243.84	
		9.60-10.00	243.84-254.00	
10"	3", 4", 6", 8", 10"	9.90-10.30	251.46-261.62	Iron pipe size PVC; C900 Cast Iron O.D. PVC; Cast Iron 100-250 A, B, C, D; Ductile Iron; AC 100, 150, 200
		10.73-11.13	272.54-282.70	
		11.05-11.45	280.67-290.83	
		11.29-11.69	286.77-296.93	
		11.70-12.10	297.18-307.34	
12"	3", 4", 6", 8", 10", 12"	12.00-12.40	304.80-314.96	C900 Cast Iron O.D. PVC; Cast Iron 100-250 A, B, C, D; Ductile Iron; AC 100, 150, 200; C905 IPS O.D. PVC (14")
		12.50-12.90	317.50-327.66	
		12.75-13.20	332.85-335.28	
		13.16-13.56	334.26-344.42	
		13.60-14.09	345.44-378.46	
14"	3", 4", 6", 8", 10", 12"	14.10-14.58	358.14-370.33	C905 Cast Iron O.D. PVC; Cast Iron 100-250 A, B, C, D; Ductile Iron; AC 100, 150, 200; C905 IPS O.D. PVC (16")
		15.25-15.65	387.35-397.51	
		15.60-16.00	396.24-406.40	
		16.38-16.73	416.05-424.94	
16"	3", 4", 6", 8", 10", 12"	16.48-16.88	418.59-428.75	C905 Cast Iron O.D. PVC; Cast Iron 100-250 A, B, C, D; Ductile Iron; AC 100, 150, 200; C905 IPS O.D. PVC (18")
		17.40-17.80	441.96-452.12	
		17.54-17.94	334.26-344.42	
		17.85-18.25	445.52-463.55	
18"	3", 4", 6", 8", 10", 12"	18.15-18.55	461.01-471.17	C905 Cast Iron O.D. PVC; Cast Iron 100-250 A, B, C, D; Ductile Iron; AC 100, 150, 200; C905 IPS O.D. PVC (20")
		18.60-19.00	472.44-482.60	
		19.30-19.70	490.22-500.38	
		19.70-20.10	500.38-510.54	
20"	3", 4", 6", 8", 10", 12"	21.40-21.80	543.56-553.72	C905 Cast Iron O.D. PVC; Cast Iron 100-250 A, B, C, D; Ductile Iron
		21.90-22.30	556.26-566.42	
		22.30-22.70	566.42-576.58	
24"	3", 4", 6", 8", 10", 12"	23.30-23.70	591.82-601.98	C905 cast iron O.D. PVC; Cast Iron 100-250 A, B, C, D; Ductile Iron
		23.80-24.10	604.52-612.14	
		25.60-26.00	650.24-660.40	

STAINLESS STEEL TAPPING SLEEVE - 4" - 24"

Nominal Size		Outlet Flange†			Dimensions*		Sleeve		Bolts Per Side
Main	Outlet	A	B	C	D	E	F		
4"	4"	5.0315	.25	7.00	15	4.50	4	4	
6"	4"	5.0315	.25	7.50	15	4.50	4	4	
6"	6"	7.0315	.31	8.00	15	6.50	4	4	
8"	4"	5.0315	.25	8.50	15	4.50	4	4	
8"	6"	7.0315	.31	9.00	15	6.50	4	4	
8"	8"	9.0315	.31	9.50	18	8.50	6	6	
10"	4"	5.0315	.25	10.00	15	4.50	4	4	
10"	6"	7.0315	.31	10.50	15	6.50	4	4	
10"	8"	9.0315	.31	11.00	18	8.50	6	6	
10"	10"	11.0315	.31	11.50	24	10.50	8	8	
12"	4"	5.0315	.25	12.00	15	4.50	4	4	
12"	6"	7.0315	.31	12.00	15	6.50	4	4	
12"	8"	9.0315	.31	12.00	18	8.50	6	6	
12"	10"	11.0315	.31	12.00	24	10.50	8	8	
12"	12"	13.0315	.31	12.00	30	12.50	8	8	
14"	4"	5.0315	.25	13.63	15	4.50	4	4	
14"	6"	7.0315	.31	13.63	15	6.50	4	4	
14"	8"	9.0315	.31	13.63	18	8.50	6	6	
14"	10"	11.0315	.31	13.63	24	10.50	8	8	
14"	12"	13.0315	.31	13.63	30	12.50	8	8	
16"	4"	5.0315	.25	14.59	15	4.50	4	4	
16"	6"	7.0315	.31	14.59	15	6.50	4	4	
16"	8"	9.0315	.31	14.59	18	8.50	6	6	
16"	10"	11.0315	.31	14.59	24	10.50	8	8	
16"	12"	13.0315	.31	14.59	30	12.50	8	8	
18"	4"	5.0315	.25	16.00	15	4.50	4	4	
18"	6"	7.0315	.31	16.00	15	6.50	4	4	
18"	8"	9.0315	.31	16.00	18	8.50	6	6	
18"	10"	11.0315	.31	16.00	24	10.50	8	8	
18"	12"	13.015	.31	16.00	30	12.50	8	8	
20"	4"	5.0315	.25	16.88	15	4.50	4	4	
20"	6"	7.0315	.31	16.88	15	6.50	4	4	
20"	8"	9.0315	.31	16.88	18	8.50	6	6	
20"	10"	11.0315	.31	16.88	24	10.50	8	8	
20"	12"	13.0315	.31	16.88	30	12.50	8	8	
24"	4"	5.0315	.25	19.00	24	4.50	8	8	
24"	6"	7.0315	.31	19.00	24	6.50	8	8	
24"	8"	9.0315	.31	19.00	24	8.50	8	8	
24"	10"	11.0315	.31	19.00	24	10.50	8	8	
24"	12"	13.0315	.31	19.00	30	12.50	10	10	

* All dimensions are in inches.

†With MJ option, this flange is replaced by an integral SS outlet pipe extension and MJ gland welded permanently in place allowing the sleeve to bolt directly to the outlet of any standard MJ valve. Dimensions for MJ option are compatible with standard connections, and A and B dimensions in chart do not apply.



CAUTION - ASBESTOS AND OTHER MATERIALS MAY CAUSE CANCER AND DAMAGE TO LUNGS. DO NOT BREATHE DUST, AVOID CREATING DUST.
Seek Expert Advice For Breathing Protection And Protective Equipment. Call OSHA 1-800-321-6742 for more information.

H-306 FABRICATED STEEL TAPPING SLEEVE - 4" - 24"

- Catalog number-- H-306 Fabricated Steel Tapping Sleeve
- Sizes - 4"*-16" main and outlet (see chart below for available size combinations)
- Outlet choices: flange or integral MJ outlet
- Outlet flange material is carbon steel: outlet flange meets or exceeds all applicable requirements of ANSI B16.1, class 125 and in accordance with MSS-SP60
- Integral MJ flange is carbon steel
- Certified to ANSI/NSF 61
- 3/4" NPT brass test plug
- 4"-12" sizes--300 psig (1725 kPa/17 barg) maximum working pressure
- 14"-16" sizes--250 psig (1375 kPa/14 barg) maximum working pressure



H-304 Series with Flange



H-304 Series MJ

How to determine a HYMAX Tapping Sleeve Part Number

Select the appropriate numbers from the pipe information chart that follows.

Example: For 6"x6" with 6.86-7.16 O.D. Range and Stainless Steel flange. Resulting Part No. 0606H306CS0716

** H-306 is constant for all HYMAX Fabricated Steel Tapping Sleeves listed here
CS = carbon steel flange, MJ=integral mechanical joint outlet.*

Main size	Outlet size	Model Number	Flange Material	Maximum O.D.
06	06	H-306*	CS**	0716

Tapping Sleeve Pipe Information

Size of Main	Size of Outlet Flange	Available O.D. Ranges	
		in.	mm
4"	3" & 4"	4.50	114.30
		4.80	117.92
6"	3", 4", 6"	6.57-6.73	166.88-170.94
		6.86-7.16	174.24-181.86
		7.10-7.40	180.34-187.96
		7.43-7.73	188.72- 196.34
8"	3", 4", 6", 8"	8.46-8.75	214.88-222.25
		8.82-9.12	224.03-231.65
		9.07-9.37	230.38-238.00
		9.39-9.69	238.51-246.13
		9.95-10.25	252.73-260.35
10"	3", 4", 6", 8", 10"	10.64-10.86	270.26-275.84
		10.95-11.25	278.13-285.75
		11.17-11.47	283.72-291.34
		11.50-11.80	292.10-299.72
		11.64-11.94	295.66-303.28
		11.94-12.24	303.28-310.90
12"	3", 4", 6", 8", 10", 12"	12.58-12.88	319.53-327.15
		13.05-13.35	331.47-339.09
		13.30-13.60	337.82-345.44
		13.79-14.09	350.27-357.89
14"	3, 4", 6", 8", 10", 12"	14.28-14.58	362.71-370.33
		14.78-15.08	375.41-383.03
		15.15-15.45	384.81-392.43
		15.42-15.72	391.67-399.29
		15.62-15.92	396.75-404.37
		15.92-16.22	404.37-411.99
16"	3", 4", 6", 8", 10", 12"	16.15-16.45	410.21-417.83
		16.43-16.73	417.32-424.94
		16.68-16.98	423.67-431.29
		16.96-17.26	430.78-438.40
		17.27-17.57	438.66-446.28
		17.57-17.87	446.28-453.90
16"	3", 4", 6", 8", 10", 12"	17.83-18.13	452.88-460.50
		18.13-18.43	460.50-468.12

Pipe O.D. Chart		
Size of Main	IPS	DI/C900/C905
4"	4.50	4.80
6"	6.625	6.90
8"	8.625	9.05
10"	10.75	11.10
12"	12.75	13.20
14"	14.00	15.30
16"	16.00	17.40

H-306 FABRICATED STEEL TAPPING SLEEVE - 4" - 24"

Nominal Size		Dimensions*					Bolts Per Side
Main	Outlet	Outlet Flange†		Sleeve			F
		A	B	C	D	E	
4"	3"	4.0315	0.25	7.00	12	3.50	3
	4"	5.0315	0.25	7.00	12	4.50	3
6"	3"	4.0315	0.25	7.50	12	3.50	3
	4"	5.0315	0.25	7.50	12	4.50	3
	6"	7.0315	0.31	8.00	12	6.50	3
8"	3"	4.0315	0.25	8.50	12	3.50	3
	4"	5.0315	0.25	8.50	12	4.50	3
	6"	7.0315	0.31	9.00	12	6.50	3
	8"	9.0315	0.31	9.50	16	8.50	4
10"	3"	4.0315	0.25	10.00	12	3.50	3
	4"	5.0315	0.25	10.00	12	4.50	3
	6"	7.0315	0.31	10.50	12	6.50	3
	8"	9.0315	0.31	11.00	16	8.50	4
	10"	11.0315	0.31	11.50	20	10.50	5
12"	3"	4.0315	0.25	12.00	12	3.50	3
	4"	5.0315	0.25	12.00	12	4.50	3
	6"	7.0315	0.31	12.00	12	6.50	3
	8"	9.0315	0.31	12.00	16	8.50	4
	10"	11.0315	0.31	12.00	20	10.50	5
	12"	13.0315	0.31	12.00	24	12.50	6
14"	3"	4.0315	0.25	13.63	12	3.50	3
	4"	5.0315	0.25	13.63	12	4.50	3
	6"	7.0315	0.31	13.63	12	6.50	3
	8"	9.0315	0.31	13.63	16	8.50	4
	10"	11.0315	0.31	13.63	20	10.50	5
	12"	13.0315	0.31	13.63	24	12.50	6
16"	3"	4.0315	0.25	14.59	12	3.50	3
	4"	5.0315	0.25	14.59	12	4.50	3
	6"	7.0315	0.31	14.59	12	6.50	3
	8"	9.0315	0.31	14.59	16	8.50	4
	10"	11.0315	0.31	14.59	20	10.50	5
	12"	13.0315	0.31	14.59	24	12.50	6

* All dimensions are in inches.

†With MJ option, this flange is replaced by an integral SS outlet pipe extension and MJ gland welded permanently in place allowing the sleeve to bolt directly to the outlet of any standard MJ valve. Dimensions for MJ option are compatible with standard connections, and A and B dimensions in chart do not apply.



CAUTION - ASBESTOS AND OTHER MATERIALS MAY CAUSE CANCER AND DAMAGE TO LUNGS. DO NOT BREATHE DUST, AVOID CREATING DUST.
Seek Expert Advice For Breathing Protection And Protective Equipment. Call OSHA 1-800-321-6742 for more information.

NOTES

NOTES

NOTES

**MUELLER® | ECHOLOGICS® | HYDRO GATE® | HYDRO-GUARD® | HYMAX® | JONES® | KRAUSZ®
MI. NET® | MILLIKEN® | PRATT® | PRATT INDUSTRIAL® | SINGER® | U.S. PIPE VALVE & HYDRANT**

To learn more, visit HymaxUSA.com.

Mueller refers to one or more of Mueller Water Products, Inc., a Delaware corporation (“MWP”), and its subsidiaries. MWP and each of its subsidiaries are legally separate and independent entities when providing products and services. MWP does not provide products or services to third parties. MWP and each of its subsidiaries are liable only for their own acts and omissions and not those of each other. MWP brands include Mueller®, Echologics®, Hydro Gate®, Hydro-Guard®, HYMAX®, Krausz®, Jones®, Mi.Net®, Milliken®, Pratt®, Pratt Industrial®, Singer®, and U.S. Pipe Valve & Hydrant. Please see muellerwp.com/brands to learn more.

© 2021 Mueller Co., LLC. All Rights Reserved. The trademarks, logos and service marks displayed in this document are the property of Mueller Co., LLC, its affiliates or other third parties. Products above marked with a section symbol (§) are subject to patents or patent applications. For details, visit www.mwppat.com. These products are intended for use in potable water applications. Please contact your Mueller Sales or Customer Service Representative concerning any other application(s).

