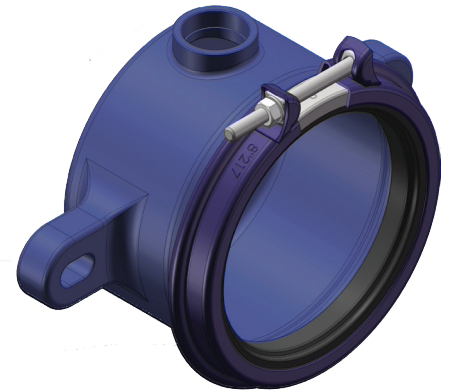


PRODUCT SPECIFICATIONS

HYMAX END CAP (4" - 12")

FEATURES

- CAPS A WIDE RANGE OF PIPE TYPES AND DIAMETERS
- READY TO USE, STAB -FIT DESIGN
- ALLOWS 4° DYNAMIC DEFLECTION, REDUCING FUTURE DAMAGE
- PATENTED HYDRAULICALLY-ASSISTED GASKET WITH 2-STAGE SEALING
- PATENTED FLIP GASKET CAN BE EASILY FLIPPED IN OR OUT TO ACCOMMODATE DIFFERENT PIPE OD'S
- CAST IN RESTRAINT TABS FOR STRENGTH AND DURABILITY



SPECIFICATIONS

STANDARDS

HYMAX END CAP MEETS OR EXCEEDS STANDARDS AWWA C-219, NSF 61, NSF 372.

SIZE

AVAILABLE IN NOMINAL DIAMETER FROM 4" - 12" STANDARD.

MATERIALS

END RINGS ASTM A 283 / A 283M GRADE C STEEL.

END CAP BODY DUCTILE IRON CASTING ASTM A536 GRADE 65-45-12. THREADED OUTLET 2" NPT.

GASKETS EPDM COMPOUNDED FOR WATER AND SEWAGE, MEETS NSF61/372, ASTM D2000 FOR CONTACT WITH DRINKING WATER.

BRIDGE AISI 304 STAINLESS STEEL.

SPHERICAL SPACERS AISI 304 STAINLESS STEEL.

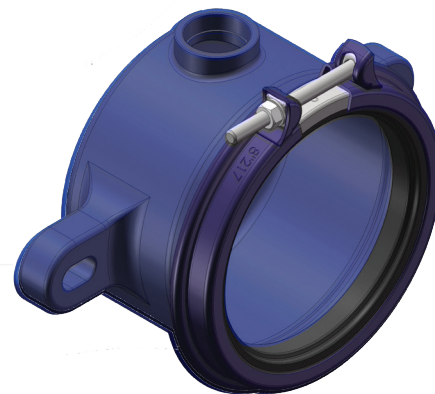
COATING 100% FUSION BONDED EPOXY FOR ENHANCED CORROSION PROTECTION. AVERAGE THICKNESS 14 MIL.

NUTS & BOLTS AISI 304 STAINLESS STEEL. ROLLED THREAD AND ANTI GALLING COATING.

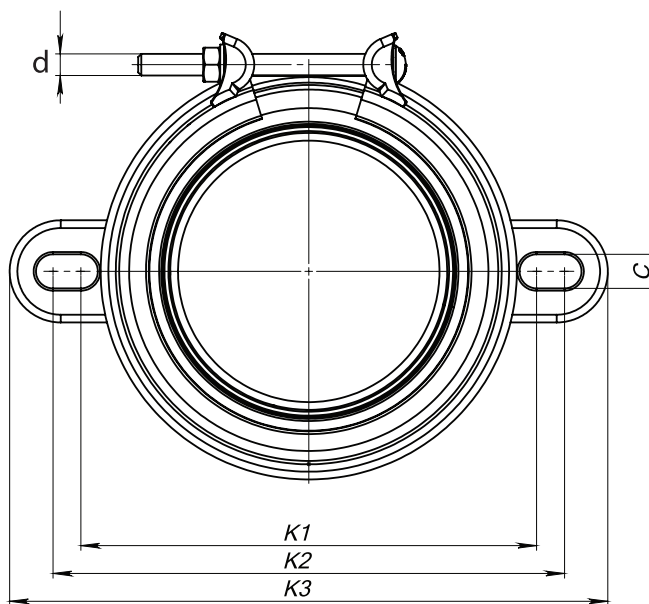
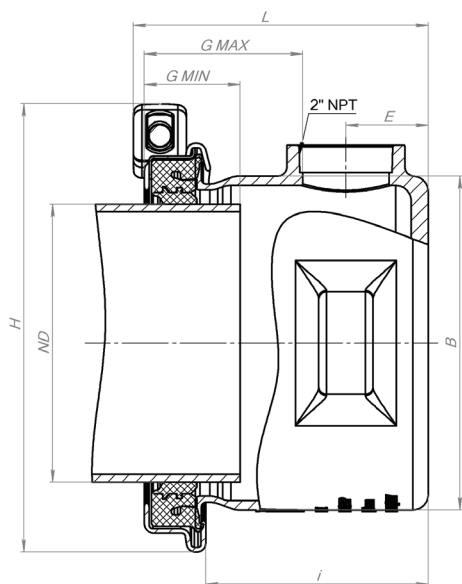
PRODUCT SPECIFICATIONS

PRODUCT PERFORMANCE

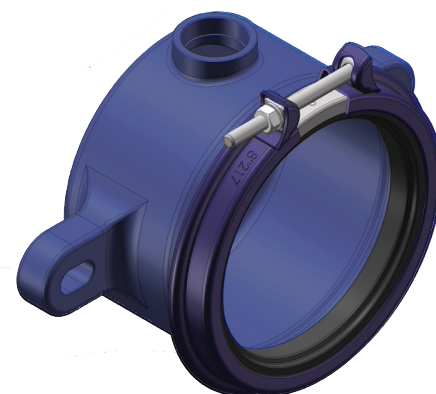
WORKING TEMPERATURE	-20°F UP TO +125°F
DYNAMIC DEFLECTION	UP TO 4°
MIN. PIPE INSERTION	2.25"
MAX. PIPE INSERTION	4"
MAXIMUM OUT OF ROUNDNESS	0.31"
WORKING PRESSURE	232 PSI
RATED PRESSURE	350 PSI
VACUUM TEST	12 PSI



PRODUCT TABLES



PRODUCT SPECIFICATIONS



PRODUCT TABLES

HYMAX END CAP NOMINAL SIZES (4" - 12")

Part Number	ND (inch)	Overall Range (inch)	Range Before Flipping Gasket (inch)	Range After Flipping Gasket (inch)	L (inch)	i (inch)	G-MIN (inch)	G-MAX (inch)	C (inch)	K1 (inch)	K2 (inch)	K3 (inch)	Bolts Qty.-Size d (inch)	Torque (ft-lbs)	Approx Weight (lb)
979-54-02108-16	4	4.25-5.63	4.25-5.00	4.92-5.63	7.6	5.7	2.25	4	0.71	9.9	9.9	12.1	1 - M14	75	16.4
979-54-02163-16	6	6.42-7.68	6.42-7.05	7.01-7.68	7.6	5.7	2.25	4	0.87	11.6	13.0	15.2	1 - M14	75	26.5
979-54-02217-16	8	8.54-9.84	8.54-9.17	9.13-9.84	7.9	6.1	2.25	4	0.94	14.4	15.7	18.2	1 - M14	75	40.0
979-54-02272-16	10	10.70-12.00	10.70-11.37	11.33-12.00	7.9	6.1	2.25	4	1.34	16.9	19.3	22.8	1 - M14	75	62.0
979-54-02278-16	10	10.96-12.26	10.96-11.63	11.59-12.26	7.9	6.1	2.25	4	1.34	17.1	19.5	23.0	1 - M14	75	63.0
979-54-02315-16	12	12.40-13.66	12.40-13.03	12.99-13.66	8.2	6.3	2.25	4	1.34	18.6	21.0	24.5	1 - M14	80	75.5
979-54-02334-16	12	13.15-14.41	13.15-13.78	13.74-14.41	8.2	6.3	2.25	4	1.34	19.5	21.9	25.4	1 - M14	80	80.9

HYMAX[®]

Repair the past. Connect the future.

 **KRAUSZ** is the creator of HYMAX

331SW 57TH AVENUE, OCALA, FLORIDA 34474

TEL: 855-457-2879 | 855-4KRAUSZ

FAX: 352-304-5787

info@krauszusa.com | www.krauszusa.com

This product is protected under a registered patent. See Krausz website for details. Copyright © 2017 Krausz Industries Ltd., All rights reserved